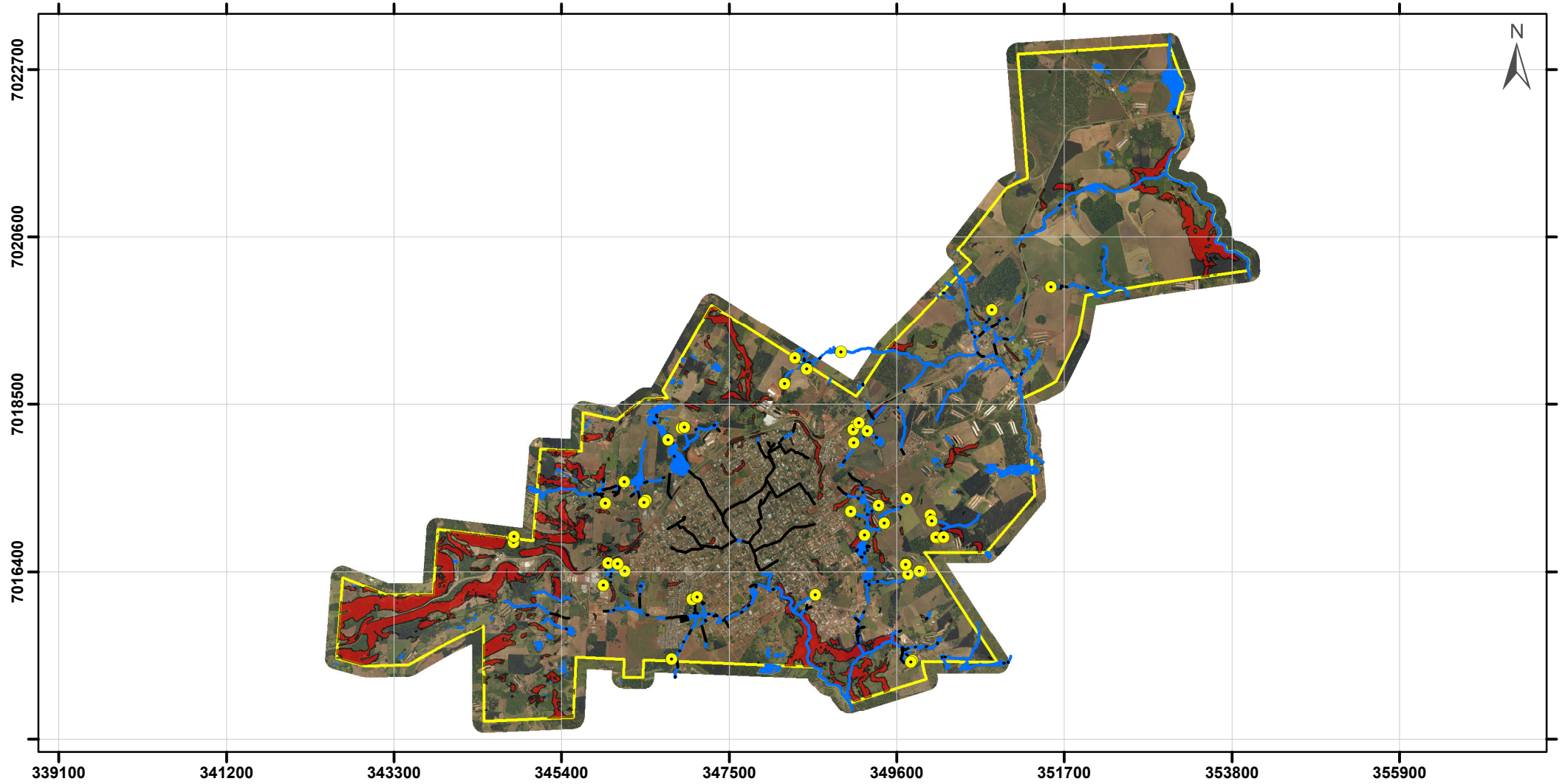



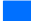




Declividade > 30% no Perímetro Urbano - Xaxim - SC



Legenda

-  Nascentes
-  Cursos Tubulados
-  Cursos d'água
-  Massa d'água
-  Declividade > 30%
-  Perímetro Urbano

Fonte:

Projeto Levantamento Aerofotogramétrico de SC
Secretaria de Estado do Desenvolvimento
Econômico Sustentável - SDS
Ortofotomosaicos RGB, com 39 cm de resolução,
Modelo Digital de Terreno (MDT), com 1 m de resolução.
Data: 2010/2011

Projeção: Universal Transversa de Mercator - 22 J
Datum Horizontal: SIRGAS 2000

0 1,75 3,5 Km

Escala: 1:70.000

Março/2019

