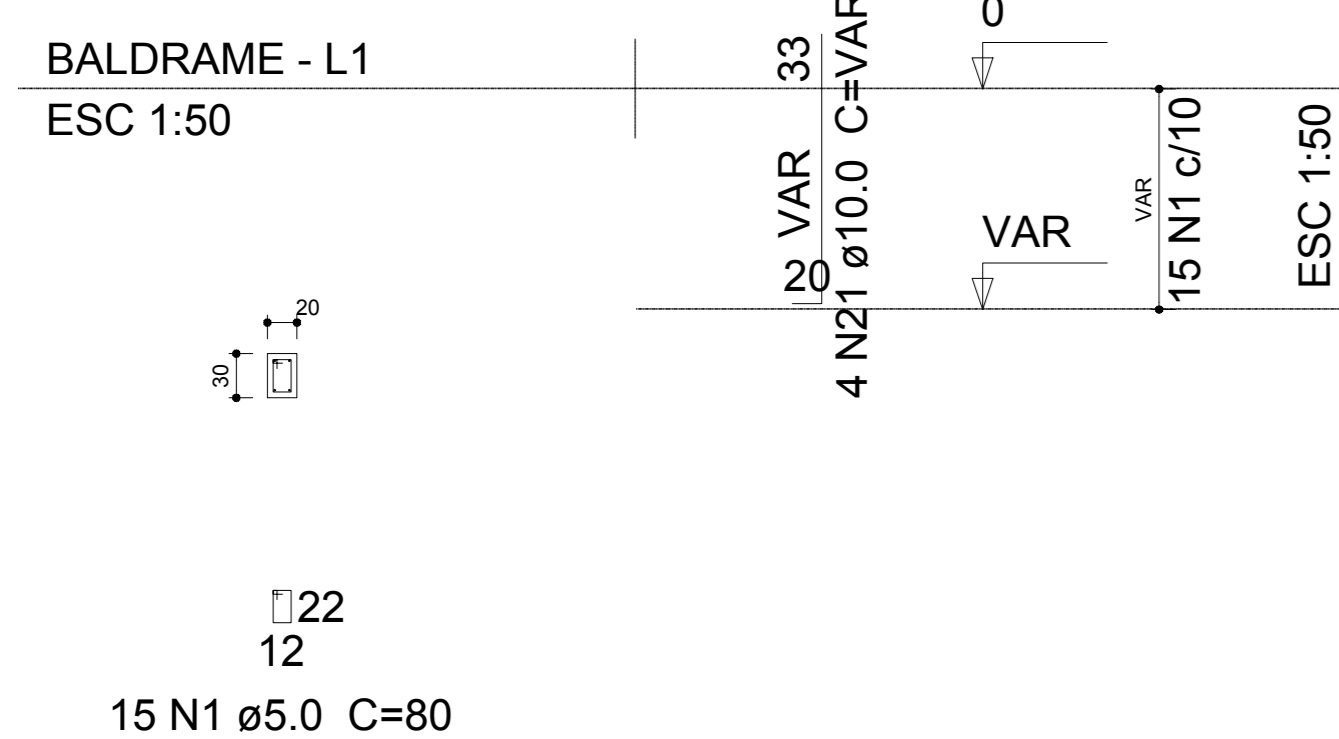
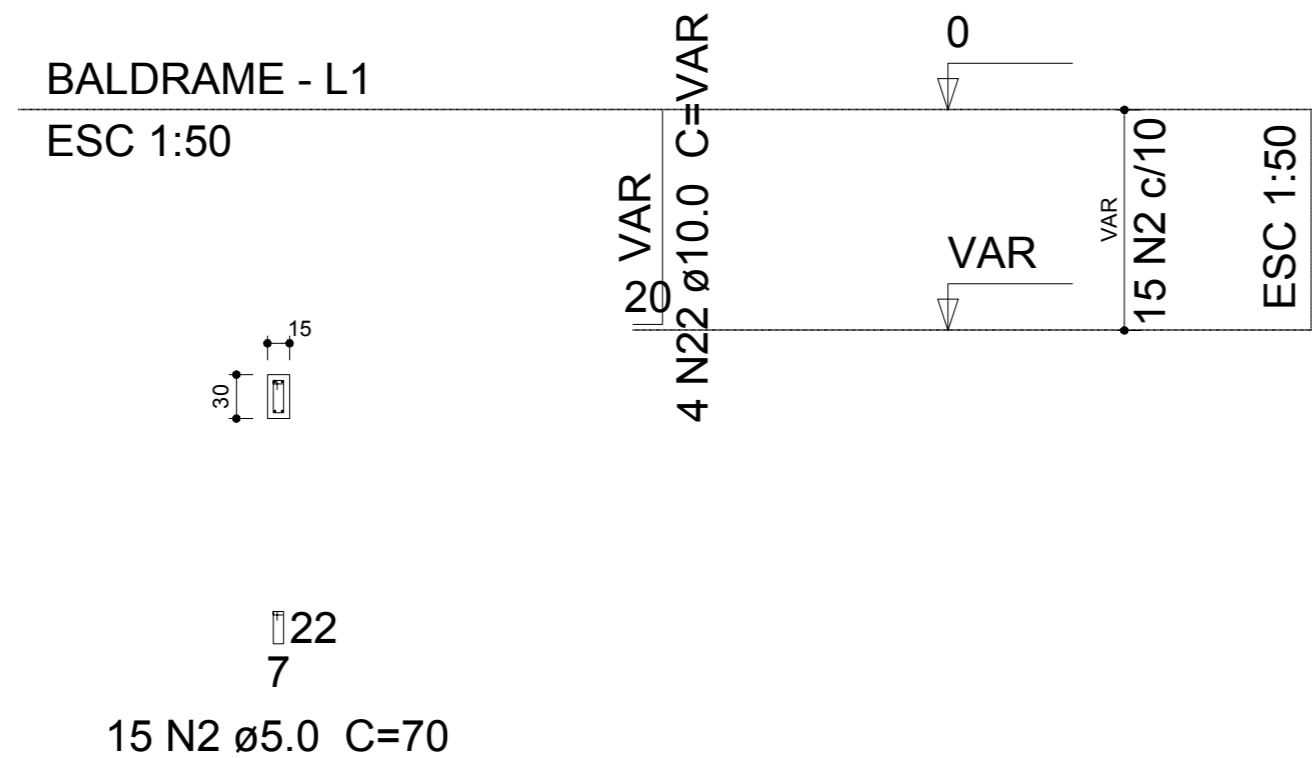


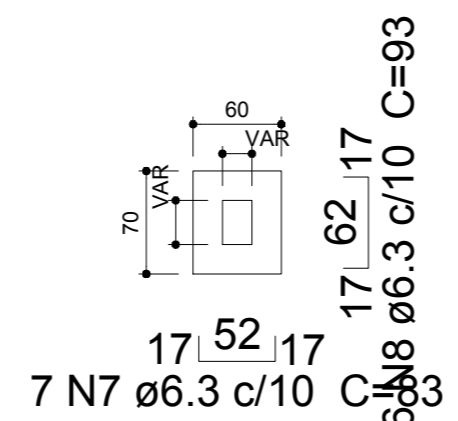
P21



P22=P23=P24=P25=P26=P27=P28=P29=P30=P31 =P35

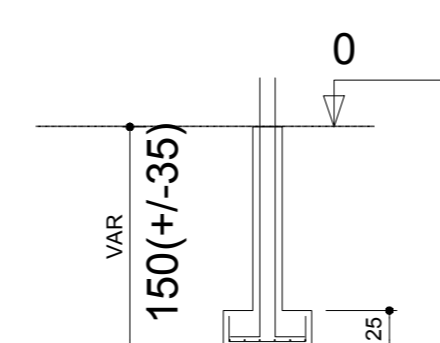


S21=S22=S23=S24=S25=S26=S27=S28=S29=S30 =S31=S35

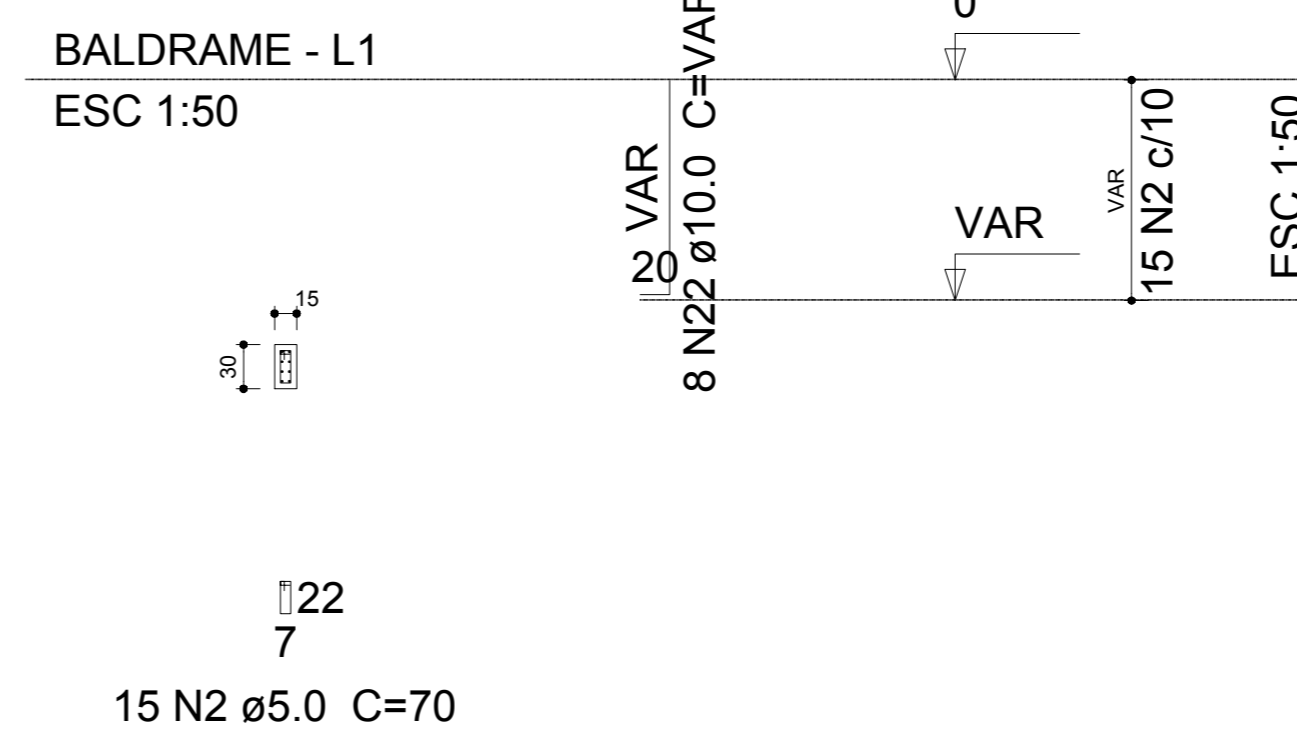


Solo compactado sobre a sapata peso especifico > 1600.00 kgf/m³

CORTE ESC 1:50

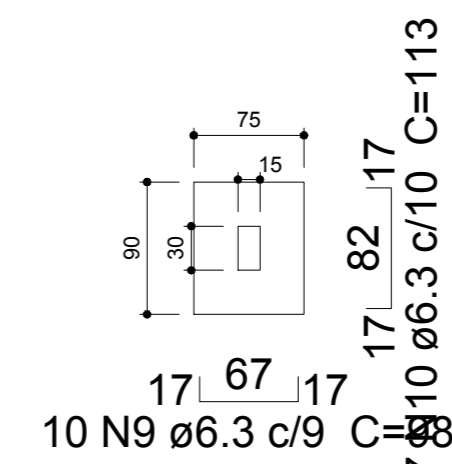


P43



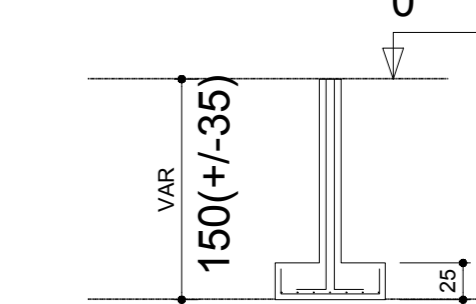
15 N2 Ø5.0 C=70

S43 PLANTA ESC 1:50



Solo compactado sobre a sapata peso especifico > 1600.00 kgf/m³

CORTE ESC 1:50

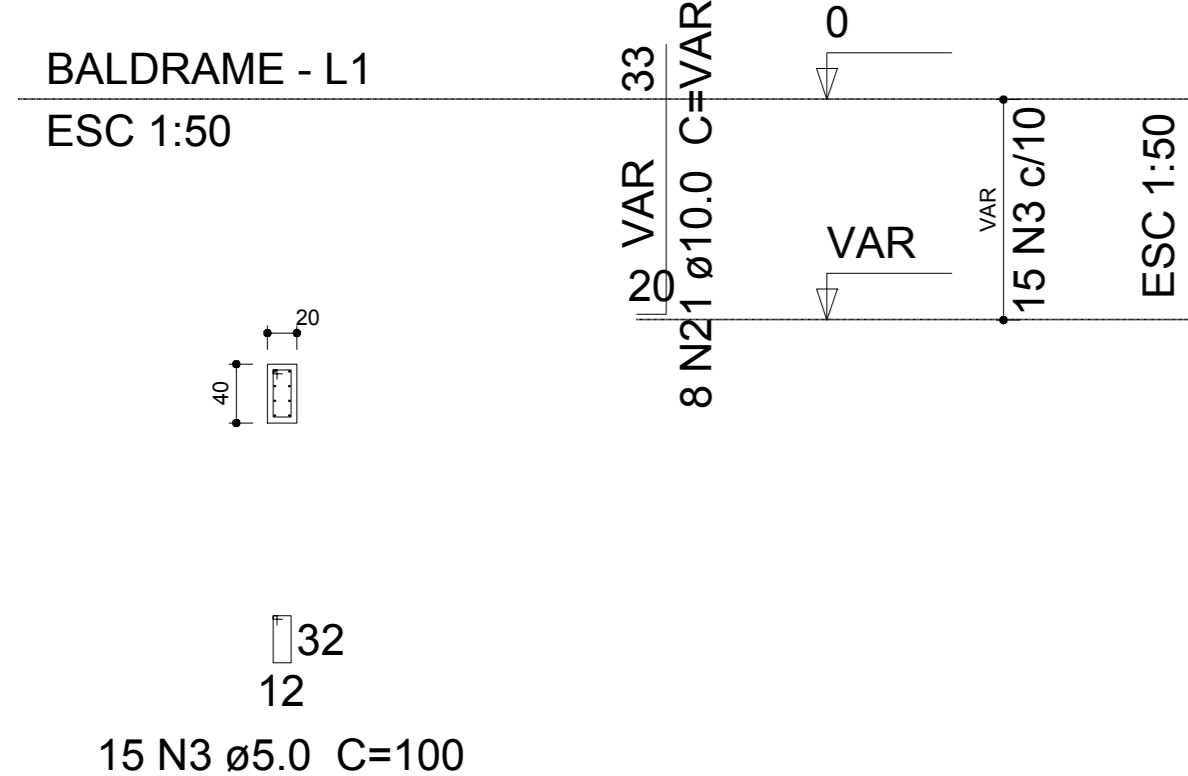


Relação do aço

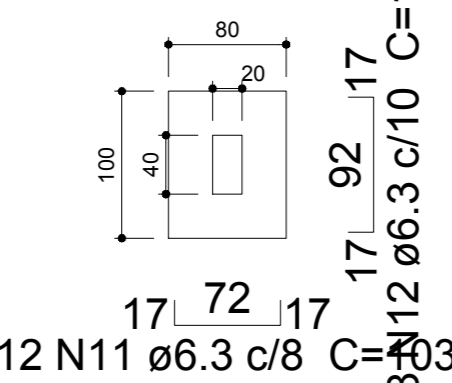
2xP12	5xP16	P21
11xP22	P43	5xP49
P50	2xP53	P57
P63	P86	P92
2xP96	5xS16	12xS21
S43	3xS53	S63
S92	10xS103	

AÇO	N	DIAM (mm)	QUANT (Barras)	UNIT (cm)	C.T.
CA60	1	5.0	15	80	
	2	5.0	195	70	
	3	5.0	255	100	
	4	5.0	23	120	
	5	5.0	180	27	
	6	5.0	30	27	
	7	6.3	84	83	
	8	6.3	72	93	
	9	6.3	10	98	
	10	6.3	7	113	
	11	6.3	12	103	
	12	6.3	8	123	
CA50	13	6.3	13	118	
	14	6.3	10	128	
	15	6.3	50	138	
	16	6.3	33	123	
	17	6.3	130	133	
	18	8.0	45	117	
	19	8.0	33	102	
	20	8.0	130	112	
	21	10.0	112	VAR	
	22	10.0	52	VAR	
	23	12.5	20	VAR	
	24	20.0	4	VAR	

P63

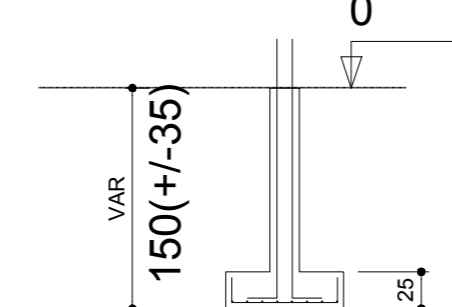


S63 PLANTA ESC 1:50

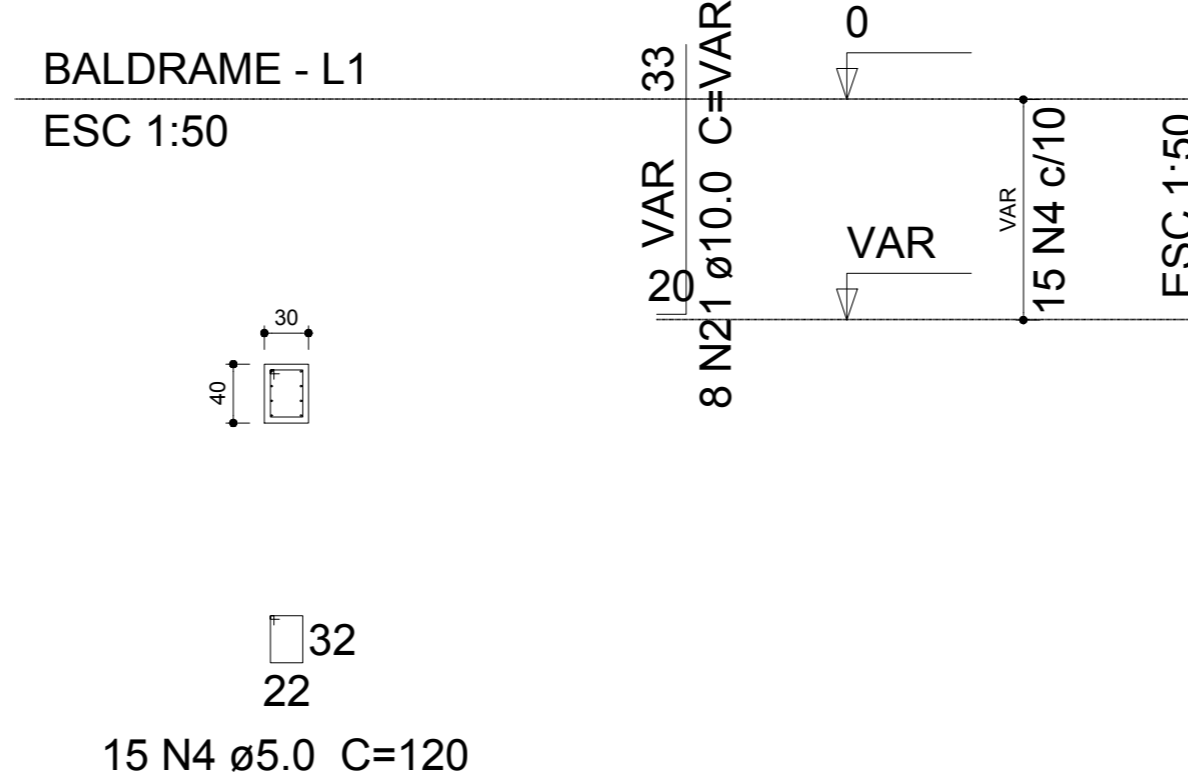


Solo compactado sobre a sapata peso especifico > 1600.00 kgf/m³

CORTE ESC 1:50

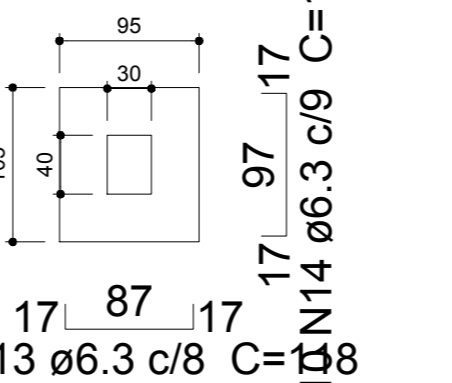


P92



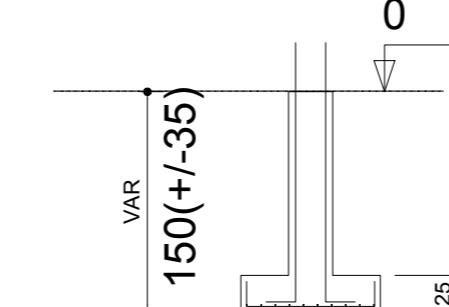
15 N4 Ø5.0 C=120

S92 PLANTA ESC 1:50

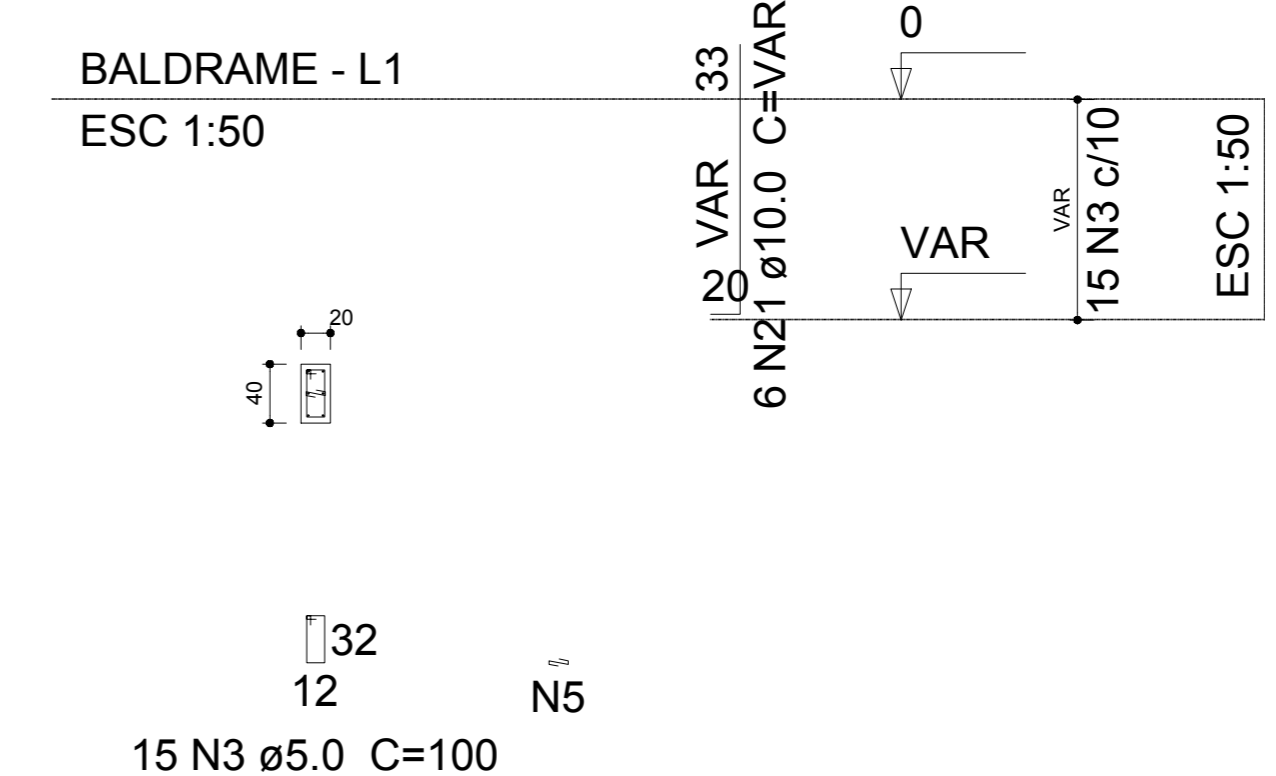


Solo compactado sobre a sapata peso especifico > 1600.00 kgf/m³

CORTE ESC 1:50



P16=P39=P46=P61=P93



15 N3 Ø5.0 C=100
15 N5 Ø5.0 C=27

Resumo do aço

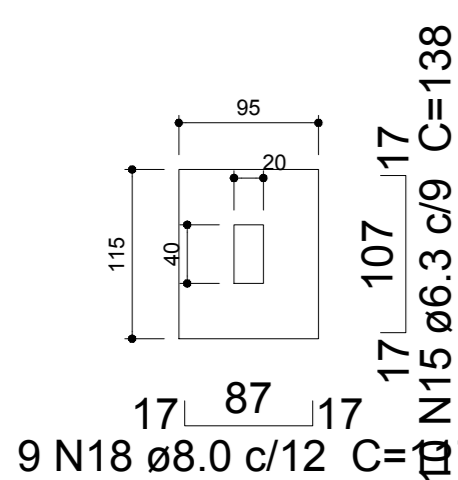
AÇO	DIAM (mm)	C.TOTAL (m)	PESO + 10 % (kg)
CA50	6.3	487.3	131.1
	8.0	232	100.7
	10.0	310.4	210.5
	12.5	41.8	44.3
CA60	20.0	9.3	25.1
	5.0	487.8	82.7

PESO TOTAL (kg)		
CA50	511.7	
CA60	82.7	

Volume de concreto (C-35) = 10.58 m³
Área de forma = 80.61 m²

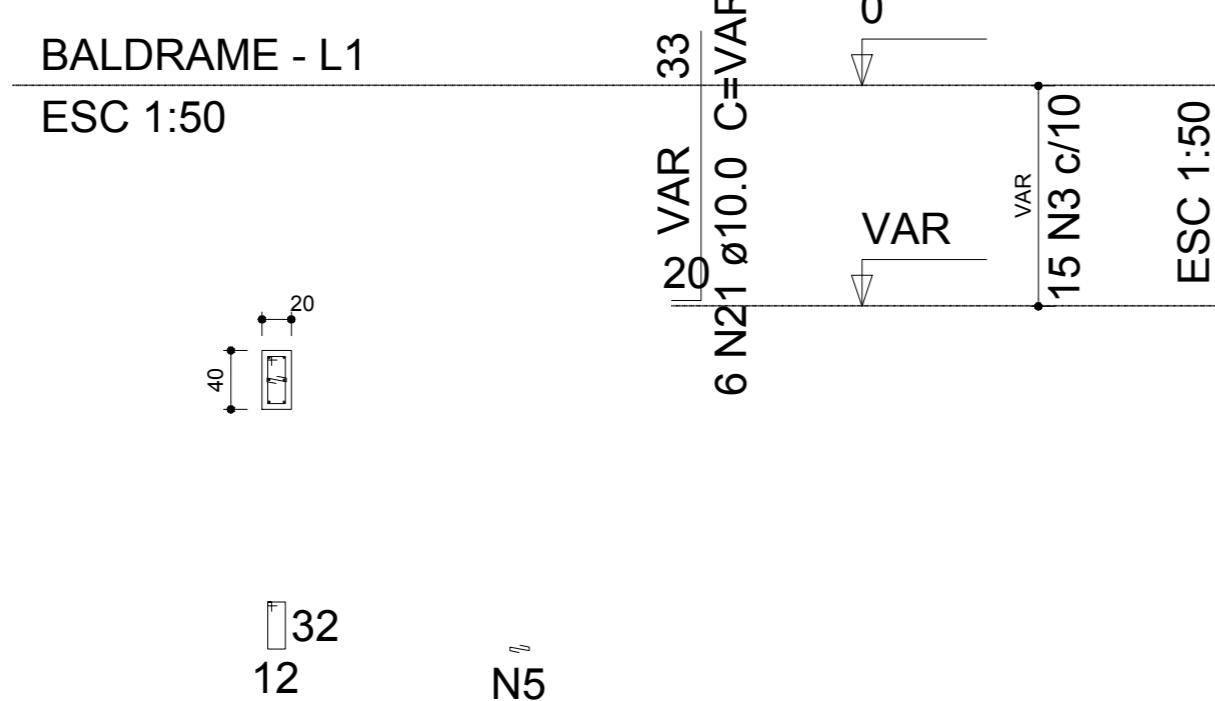
S16=S39=S46=S61=S93

PLANTA ESC 1:50 CORTE ESC 1:50



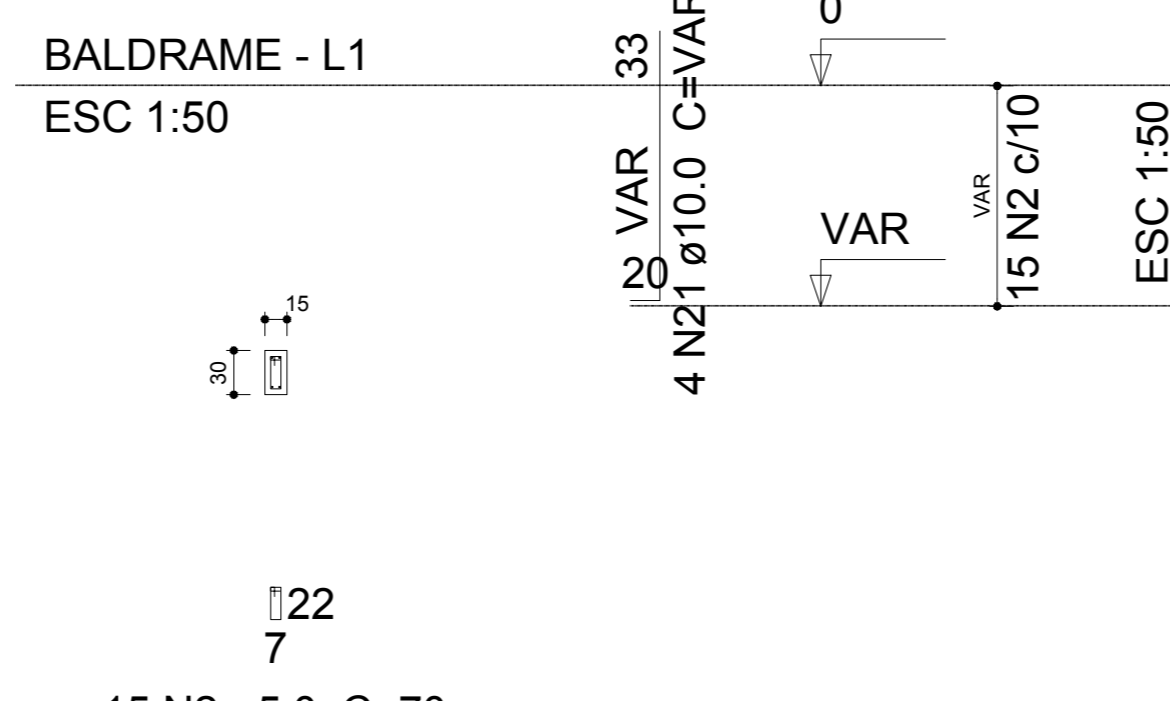
Solo compactado sobre a sapata peso especifico > 1600.00 kgf/m³

P53=P88



15 N3 Ø5.0 C=100
15 N5 Ø5.0 C=27

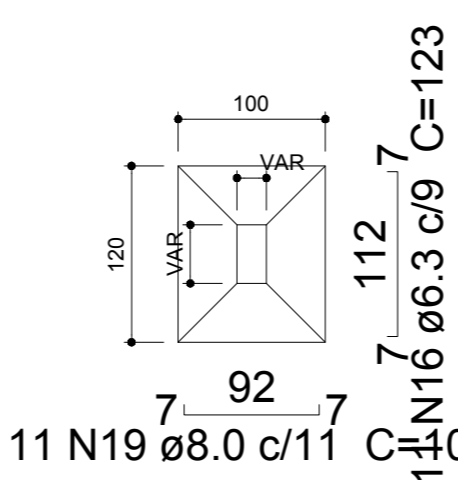
P57



15 N2 Ø5.0 C=70

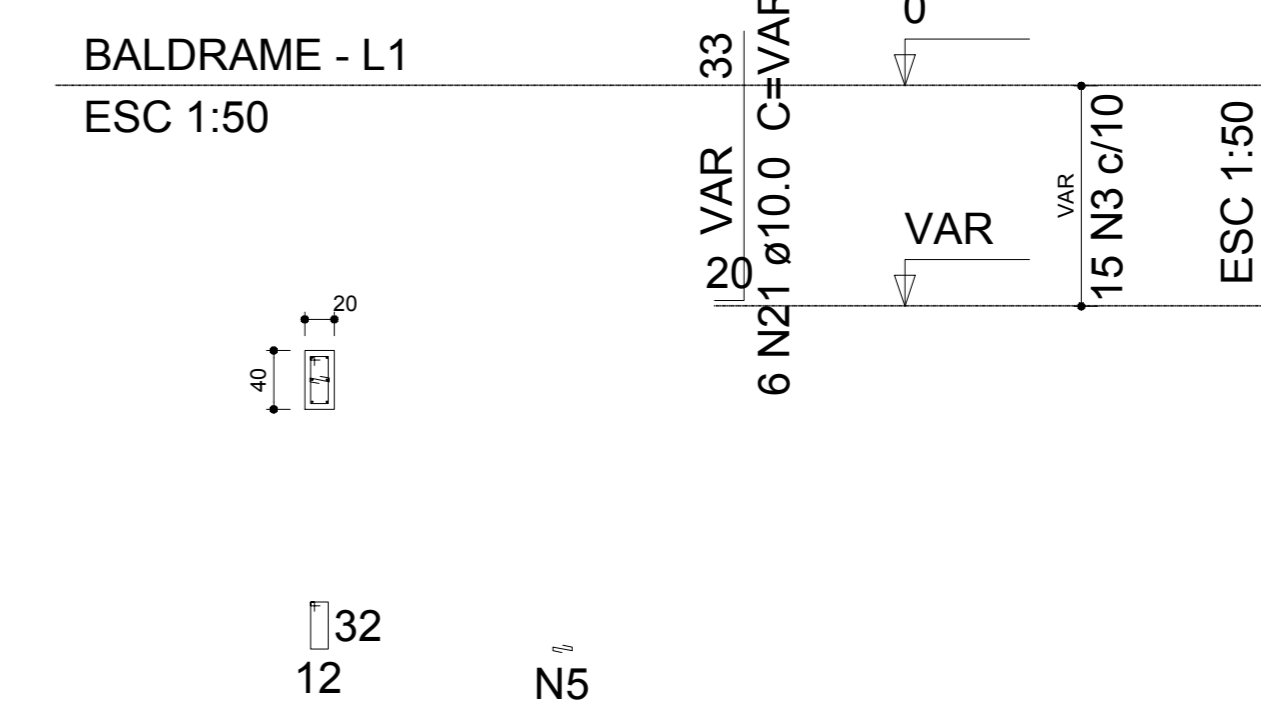
S53=S57=S88

PLANTA ESC 1:50 CORTE ESC 1:50



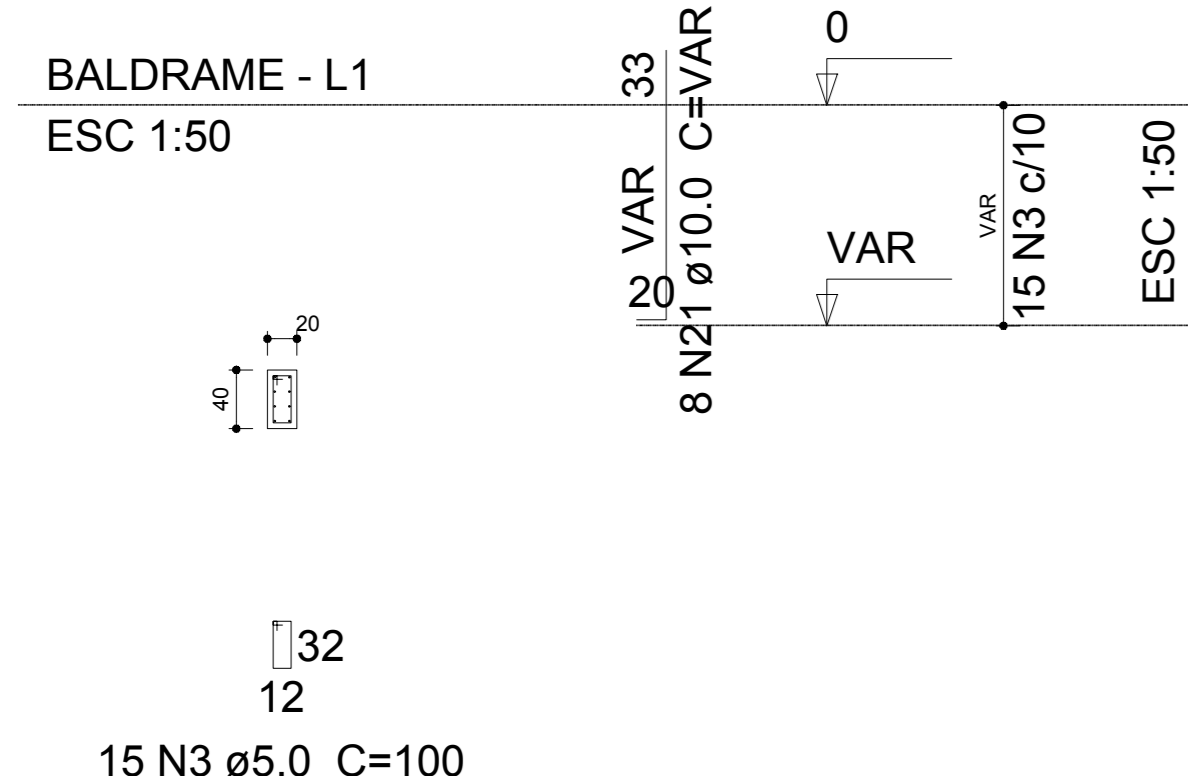
Solo compactado sobre a sapata peso especifico > 1600.00 kgf/m³

P49=P58=P85=P87=P103



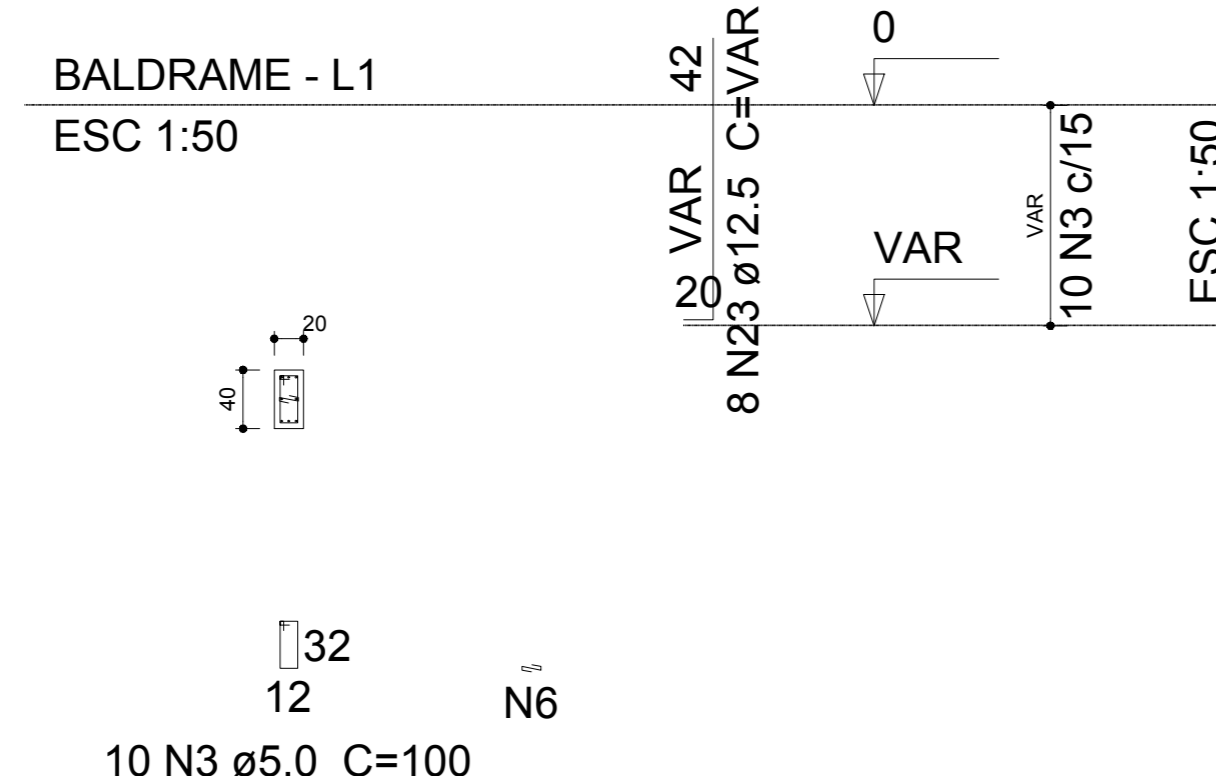
15 N3 Ø5.0 C=100
15 N5 Ø5.0 C=27

P12=P33



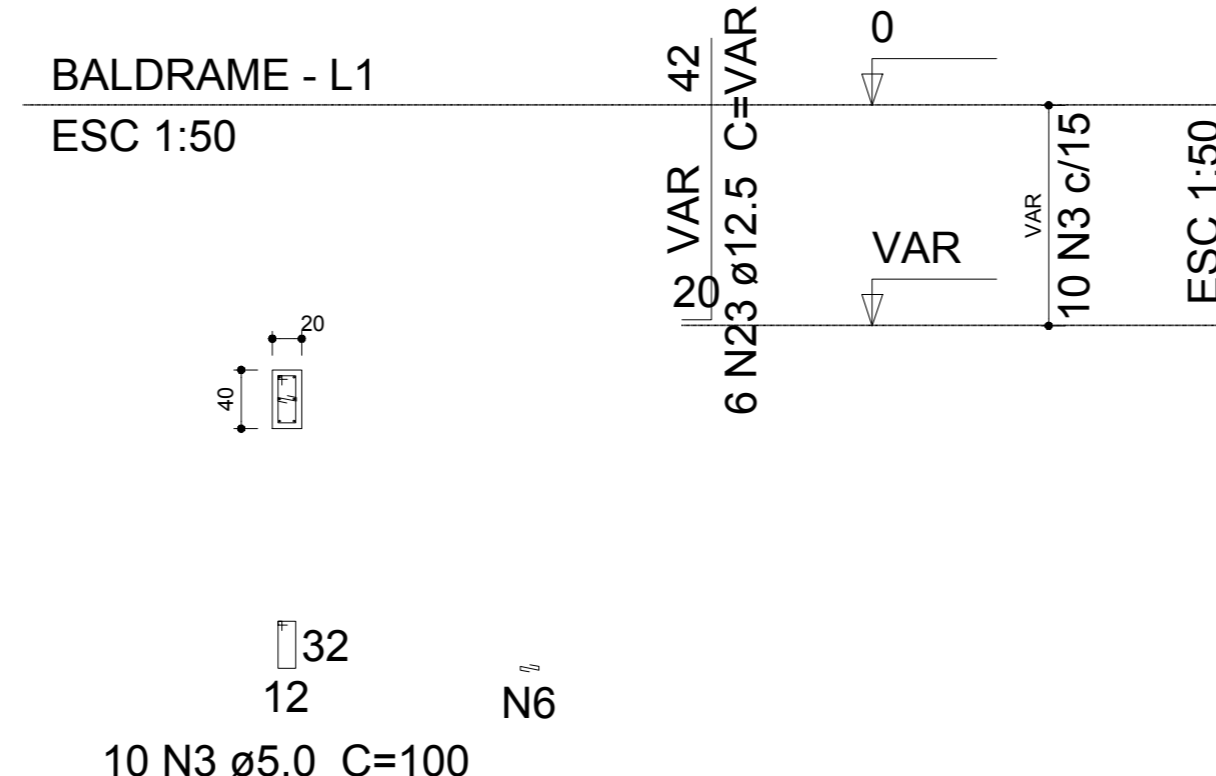
15 N3 Ø5.0 C=100

P50



10 N3 Ø5.0 C=100
10 N6 Ø5.0 C=27

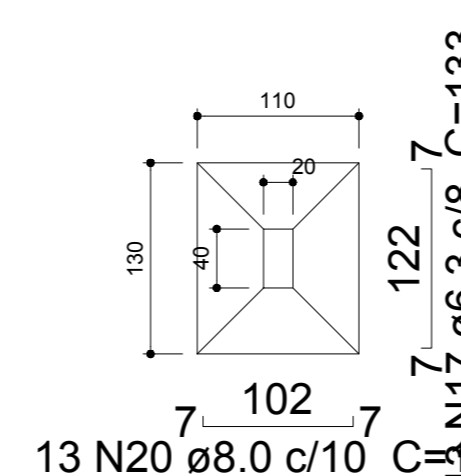
P96=P97



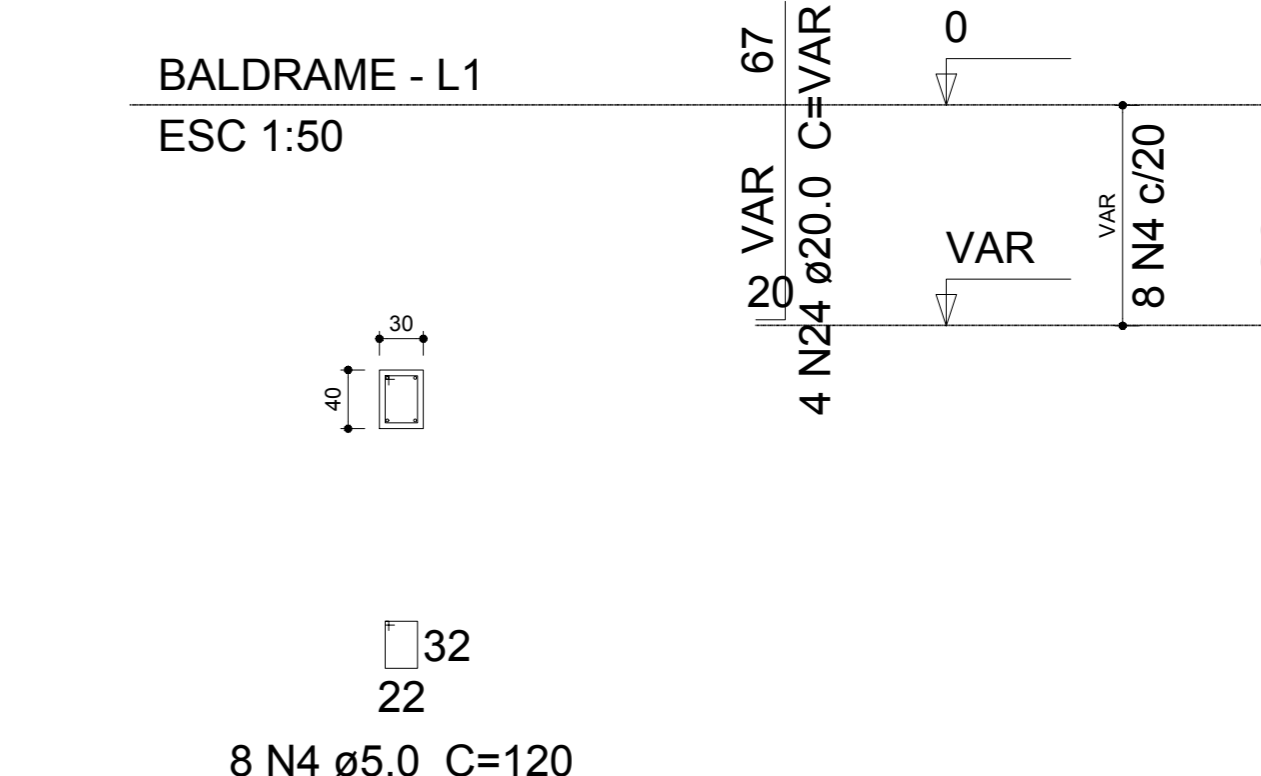
10 N3 Ø5.0 C=100
10 N6 Ø5.0 C=27

S12=S33=S49=S50=S58=S85=S87=S96=S97=S103 P86

PLANTA ESC 1:50 CORTE ESC 1:50



Solo compactado sobre a sapata peso especifico > 1600.00 kgf/m³



8 N4 Ø5.0 C=120



ENGENHARIA E INFRAESTRUTURA

Rua Primo Taccu, 350, Bairro Taccu - Jaraguá - SC
E-mail: engenharia.engeobra@gmail.com Cel: (49) 9 9576-0226

OBRA: GINÁSIO SANTA TEREZINHA							
LOCAL: Rua Achilles Biassotto, s/n, Bairro Guarany - Xaxim - SC							
PROJETO: PROJETO ESTRUTURAL							
ESPECIFICAÇÕES: - Fundações	<table border="1" style="width: 100%;"> <tr> <td>DATA: 07/2021</td> <td>DESENHO: T.L</td> </tr> <tr> <td>ÁREA: 3.544,73 m²</td> <td>PRANCHA: 02 /27</td> </tr> <tr> <td>ESCALA: Indicada</td> <td></td> </tr> </table>	DATA: 07/2021	DESENHO: T.L	ÁREA: 3.544,73 m²	PRANCHA: 02 /27	ESCALA: Indicada	
DATA: 07/2021	DESENHO: T.L						
ÁREA: 3.544,73 m²	PRANCHA: 02 /27						
ESCALA: Indicada							
Projeto: SAMUEL SPSSATTO OUTEIRO Engº Civil - CREA SC 133319-7	Proprietário: PREFEITURA MUNICIPAL DE XAXIM CNPJ: 82.854.670/0001-30						