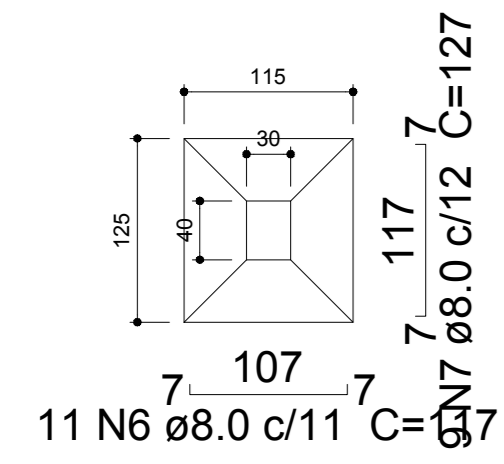
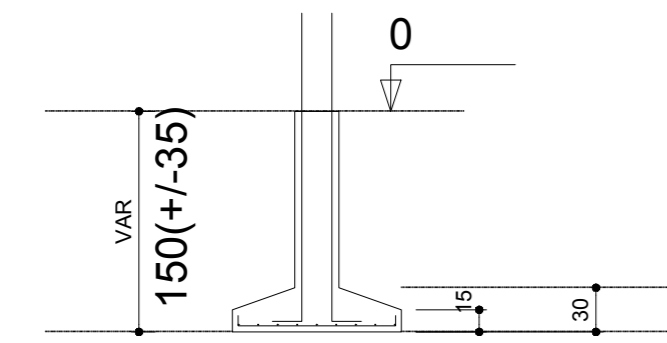


S86  
PLANTA  
ESC 1:50

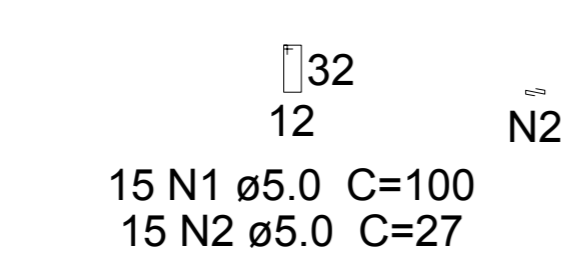
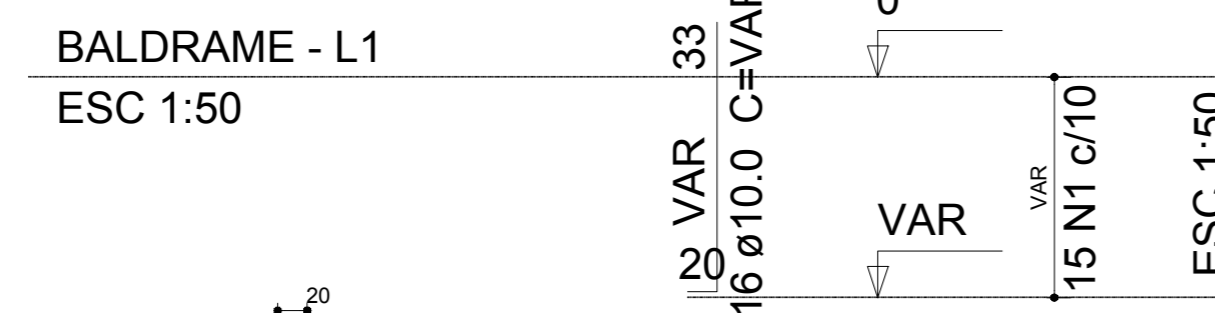


Solo compactado sobre a sapata  
peso específico > 1600.00 kgf/m³

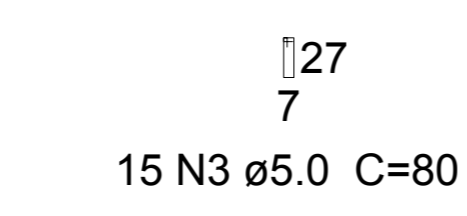
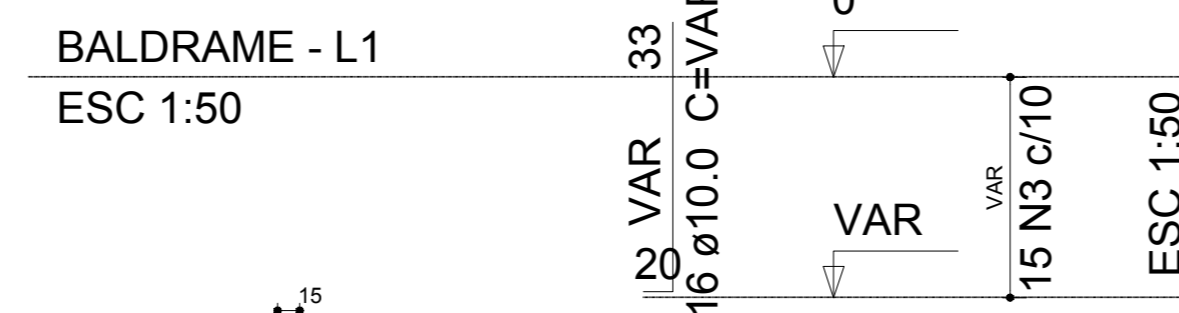
CORTE  
ESC 1:50



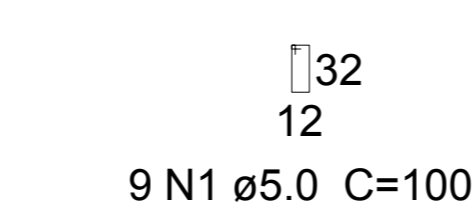
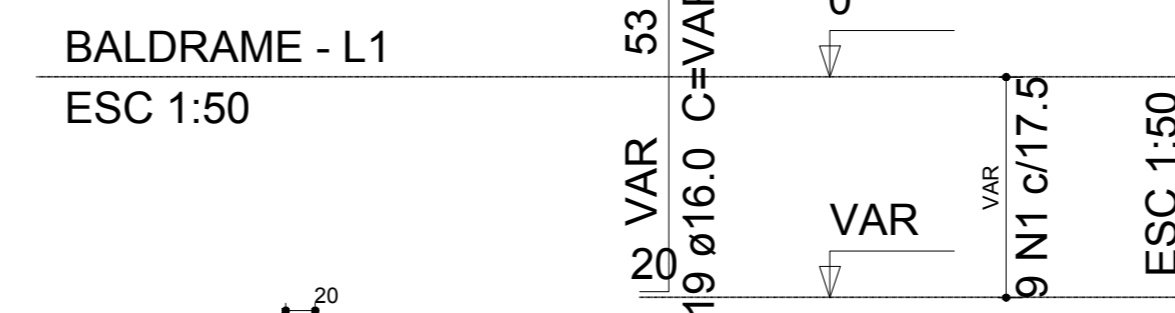
P13=P14=P37=P42=P66=P100



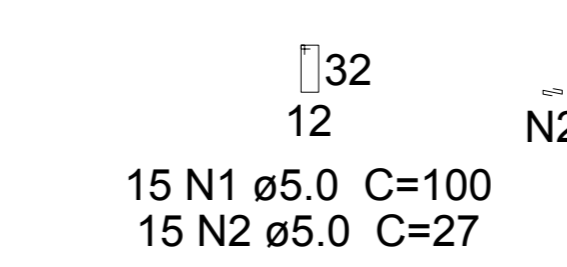
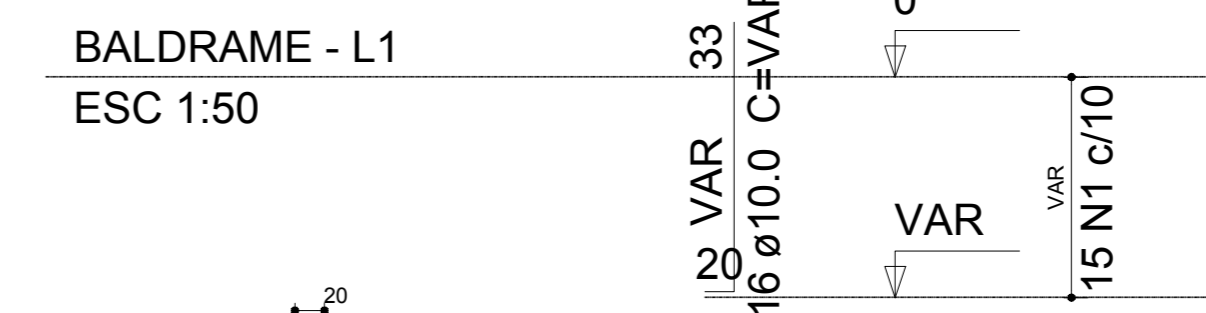
P34



P89



P91



Relação do aço

6xP13	2xP17	P18
P34	2xP47	2xP48
P64	P84	P89
P90	P91	3xS17
5xS48	S64	S84
S86	9xS100	6xS101

AÇO	N	DIAM (mm)	QUANT (Barras)	UNIT (cm)	C.TOTAL (cm)
CA60	1	5.0	234	100	23400
	2	5.0	195	27	5265
	3	5.0	15	80	1200
	4	5.0	15	120	1800
CA50	5	5.0	15	120	1800
	6	8.0	11	117	1287
	7	8.0	28	127	3556
	8	8.0	135	122	16470
	9	8.0	99	142	14058
	10	8.0	15	132	1980
	11	8.0	14	137	1918
	12	8.0	92	157	14444
	13	8.0	51	162	8262
	14	8.0	126	162	20412
	15	8.0	84	192	16128
	16	10.0	118	VAR	VAR
	17	10.0	70	136	9520
	18	10.0	42	141	5922
	19	16.0	4	VAR	VAR

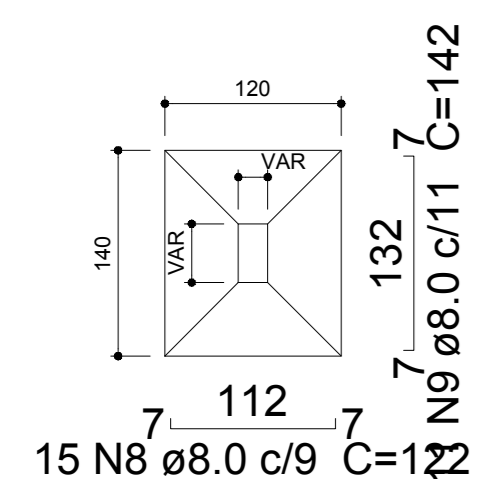
Resumo do aço

AÇO	DIAM (mm)	C.TOTAL (m)	PESO + 10% (kg)
CA50	8.0	985.2	427.6
	10.0	391.6	265.6
	16.0	8.8	15.2
CA60	5.0	334.7	56.7
PESO TOTAL (kg)			
CA50		708.4	
CA60		56.7	

Volume de concreto (C-35) = 20.75 m³  
Área de forma = 105.84 m²

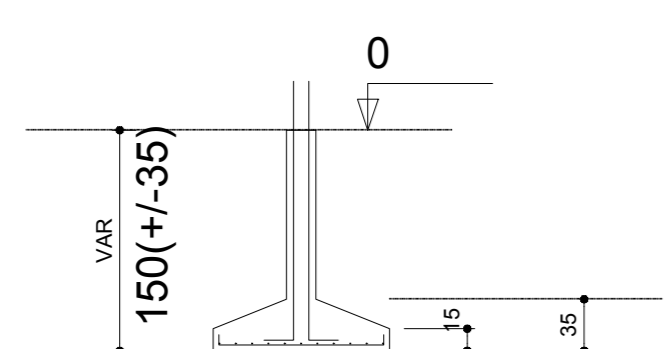
S13=S14=S34=S37=S42=S66=S89=S91=S100

PLANTA  
ESC 1:50

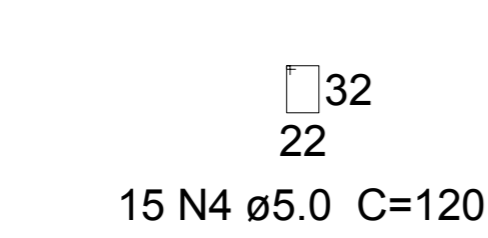
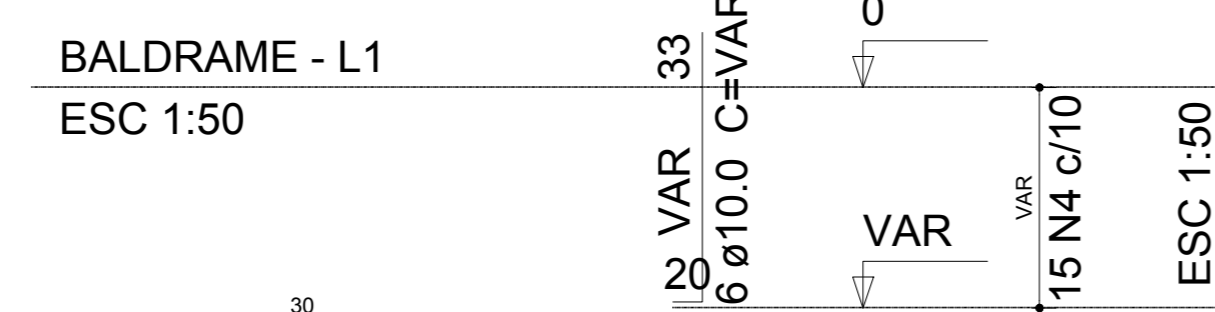


Solo compactado sobre a sapata  
peso específico > 1600.00 kgf/m³

CORTE  
ESC 1:50

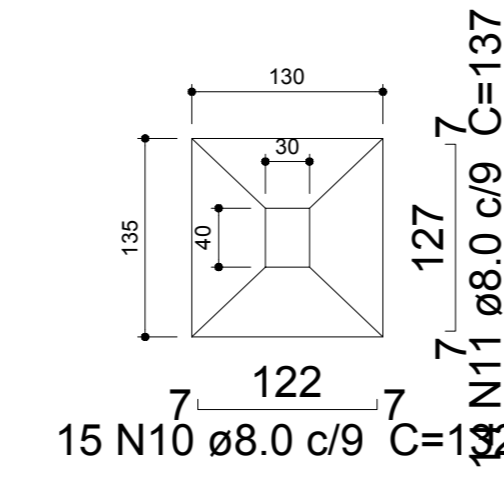


P84=P32



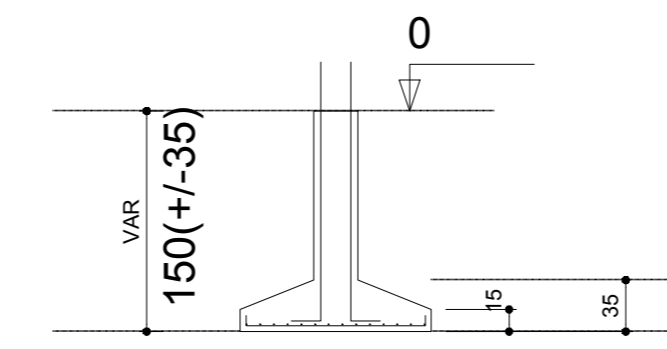
S84=S32

PLANTA  
ESC 1:50

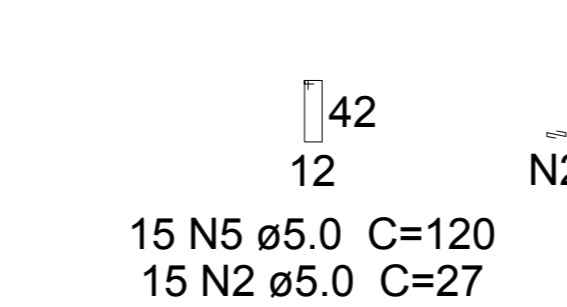
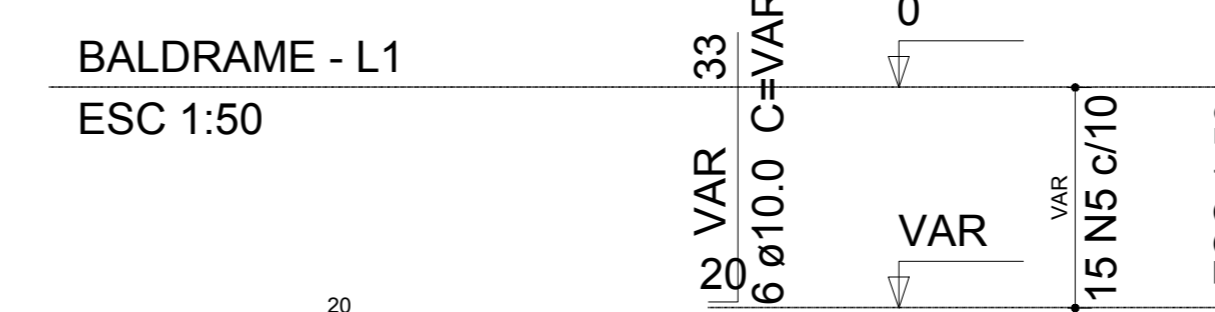


Solo compactado sobre a sapata  
peso específico > 1600.00 kgf/m³

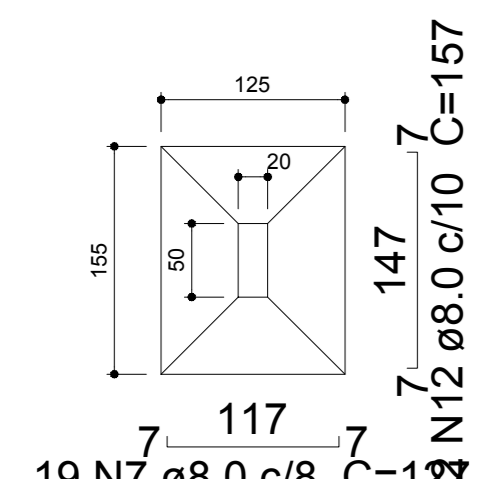
CORTE  
ESC 1:50



P64

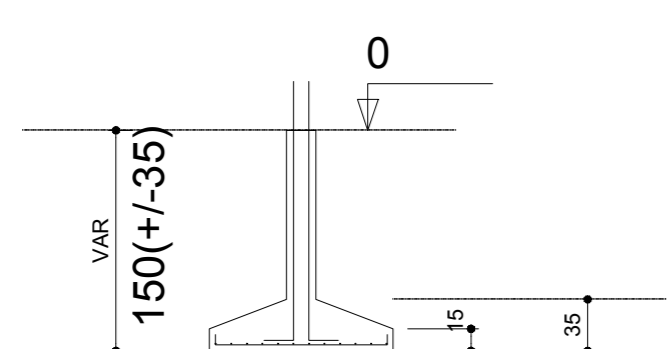


S64  
PLANTA  
ESC 1:50

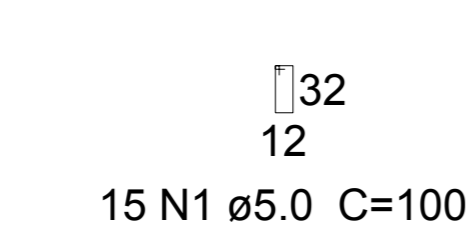
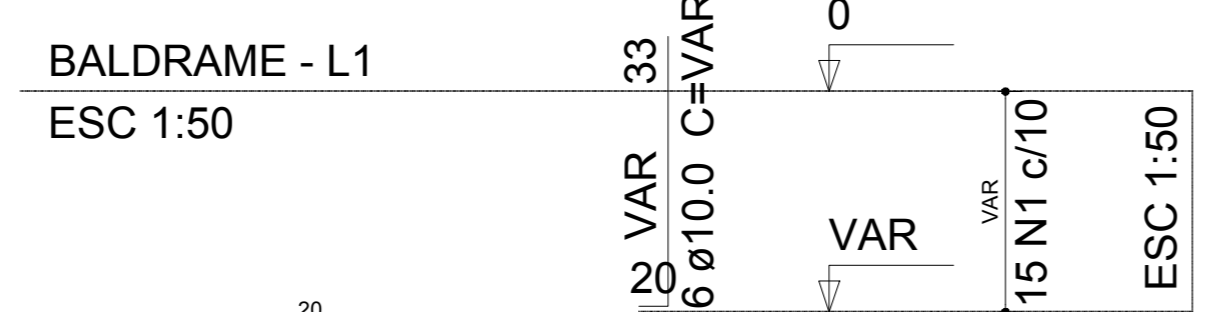


Solo compactado sobre a sapata  
peso específico > 1600.00 kgf/m³

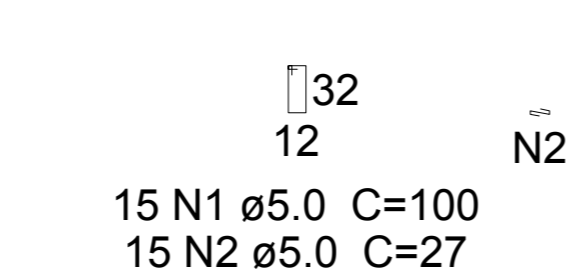
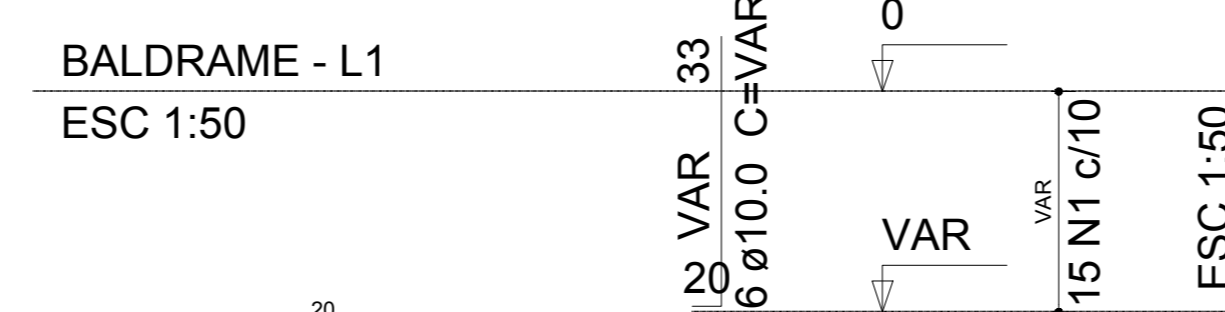
CORTE  
ESC 1:50



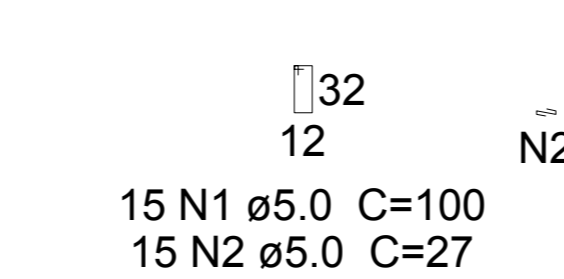
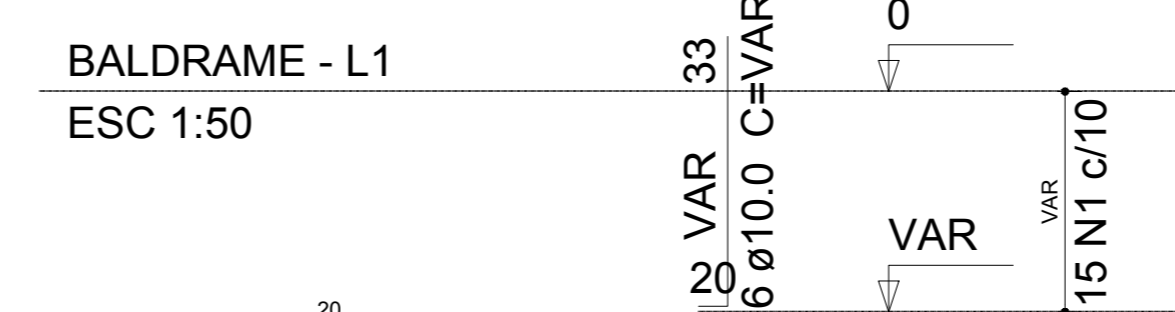
P47=P54



P48=P68

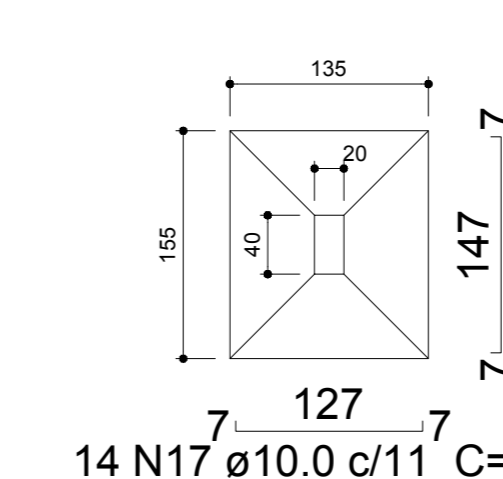


P90



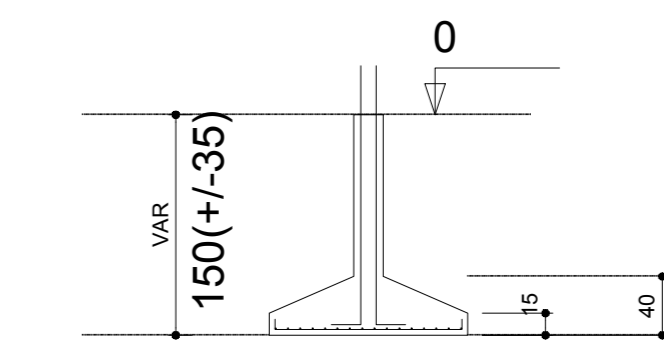
S47=S48=S54=S68=S90

PLANTA  
ESC 1:50

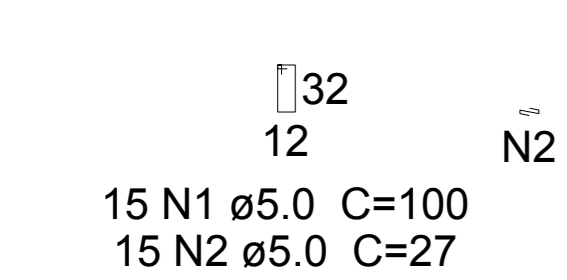


Solo compactado sobre a sapata  
peso específico > 1600.00 kgf/m³

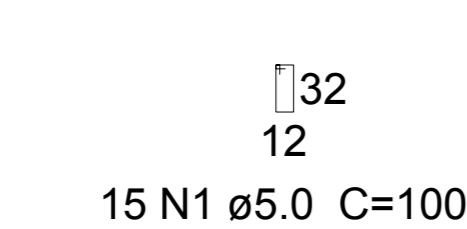
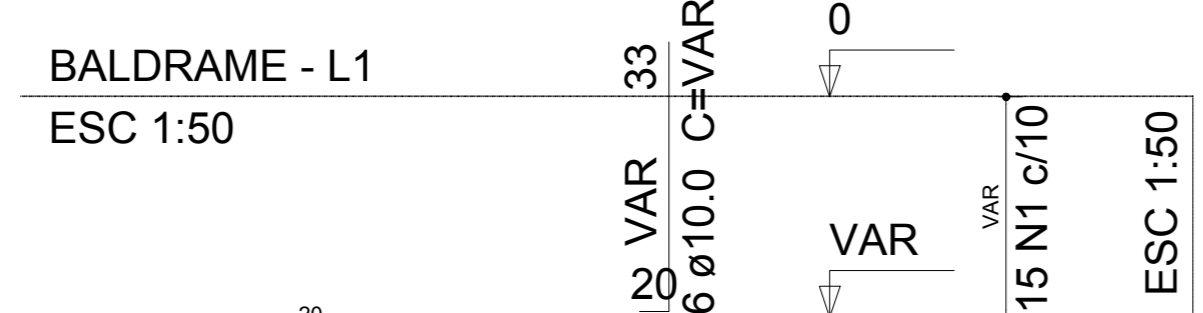
CORTE  
ESC 1:50



P17=P40

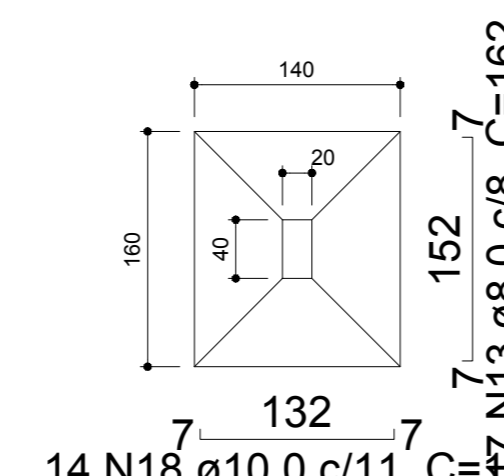


P18



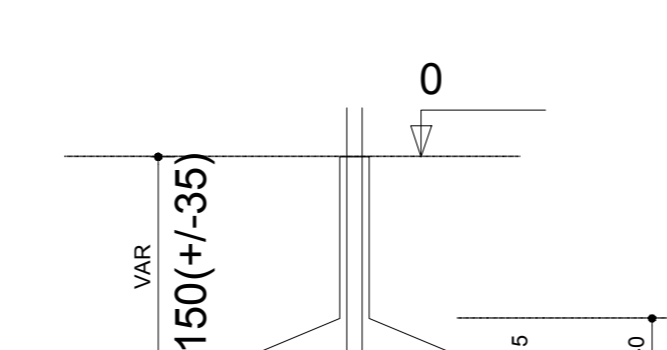
S17=S18=S40

PLANTA  
ESC 1:50



Solo compactado sobre a sapata  
peso específico > 1600.00 kgf/m³

CORTE  
ESC 1:50





ENGENHARIA E INFRAESTRUTURA

Rua Primo Taccu, 350, Bairro Taccu - Jaraguá - SC  
E-mail: engenharia@engeobra.com.br - Tel: (49) 9 9976-0226

OBRA:		GINÁSIO SANTA TEREZINHA	
LOCAL:			
Rua Achilles Biassotto, s/n, Bairro Guarany - Xaxim - SC			
PROJETO:			
PROJETO ESTRUTURAL			
ESPECIFICAÇÕES: - Fundações	DATA:	07/2021	DESENHO:
	ÁREA:	3.544,73 m²	PRANCHA:
	ESCALA:	Indicada	<b>03</b>
Projeto:		Proprietário:	
SAMUEL SPESASSATO OUTEIRO Eng. Civil - CREA SC 133319-7		PREFEITURA MUNICIPAL DE XAXIM CNPJ.82.854.670/0001-30	