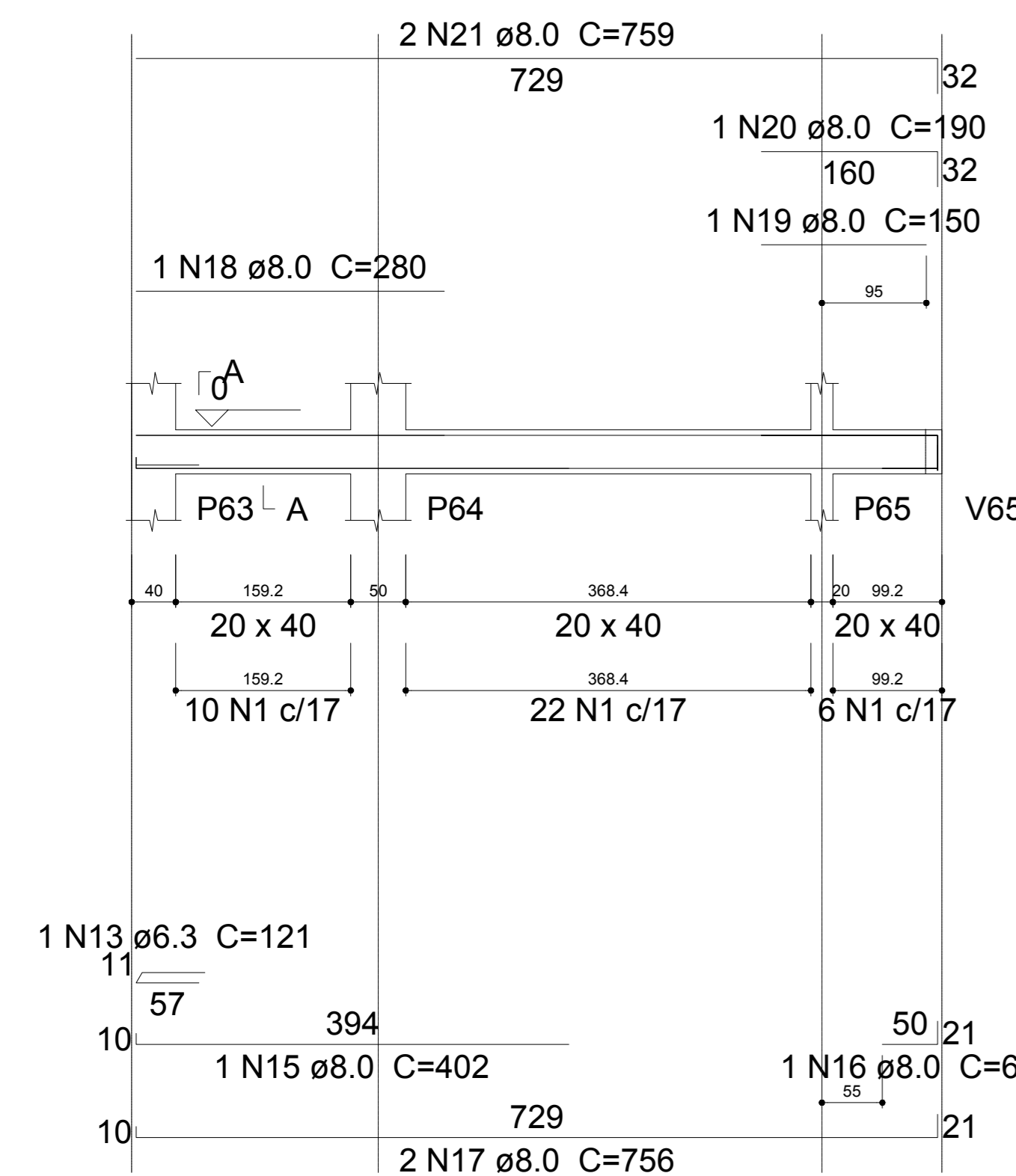


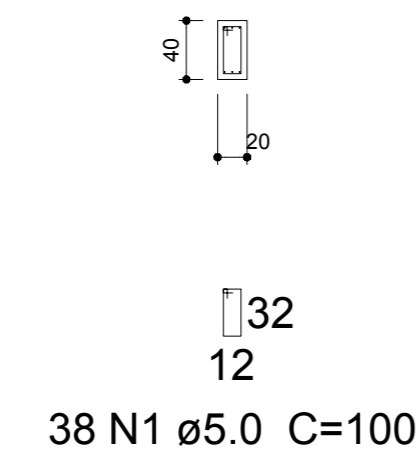
V30

ESC 1:50



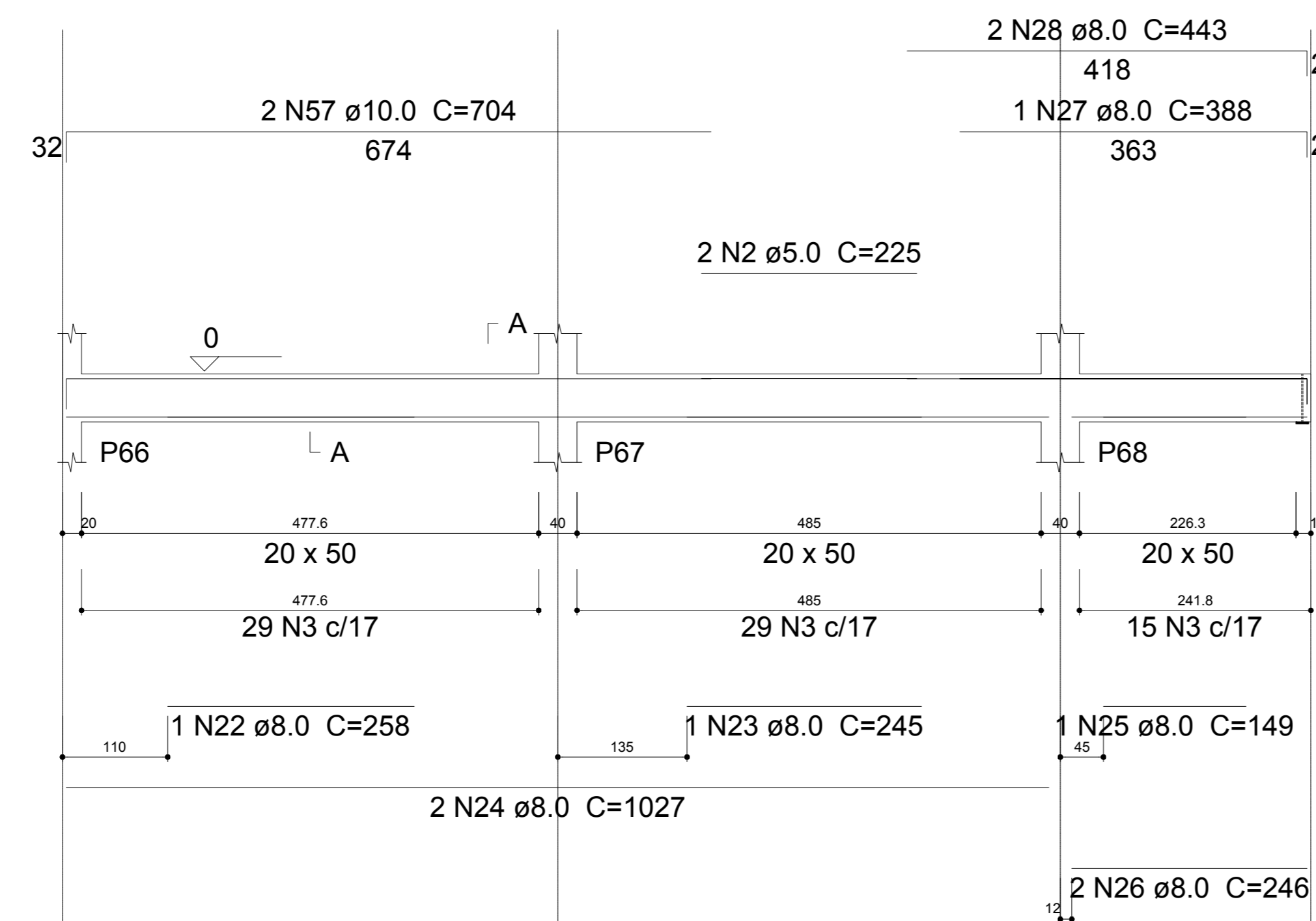
SEÇÃO A-A

ESC 1:50



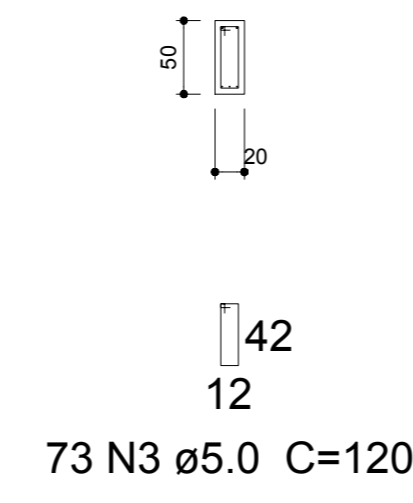
V32

ESC 1:50



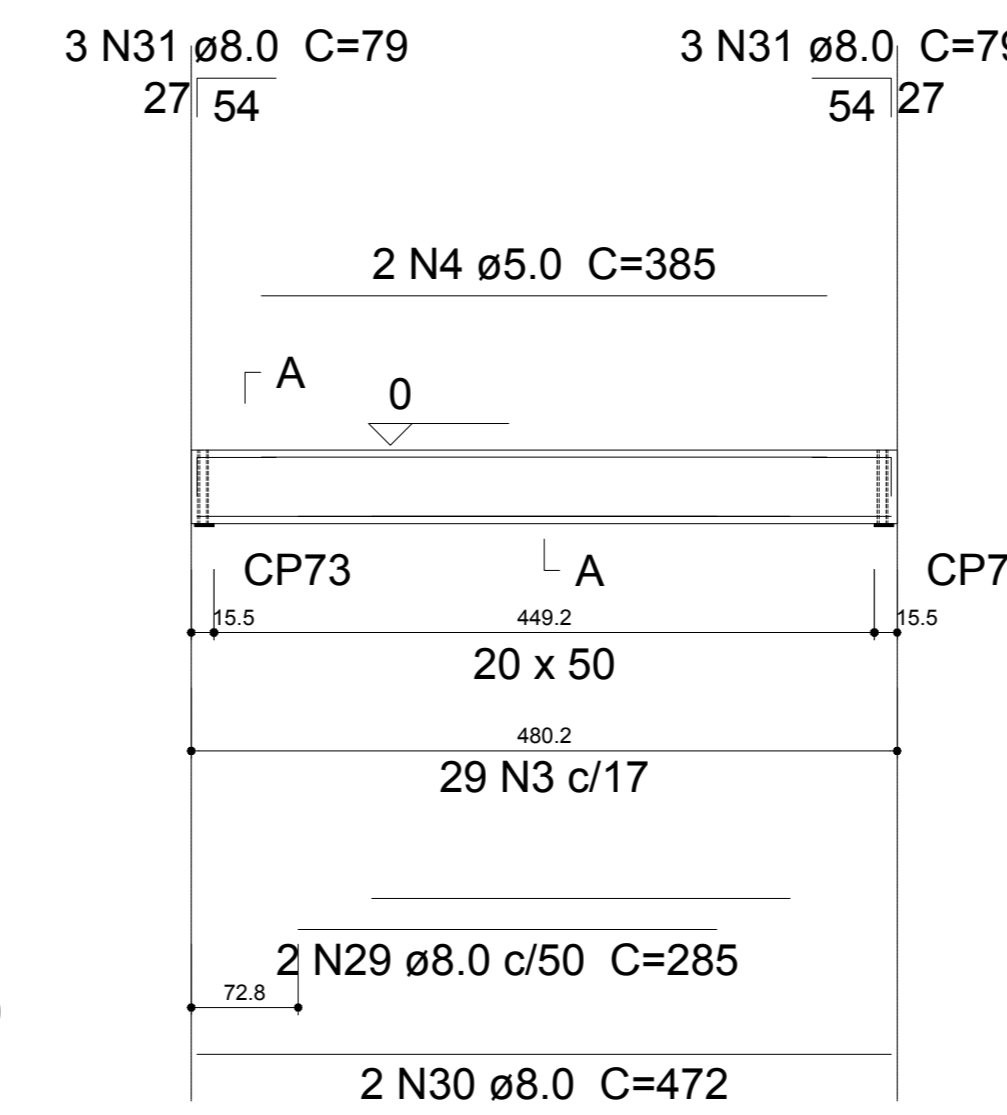
SEÇÃO A-A

ESC 1:50



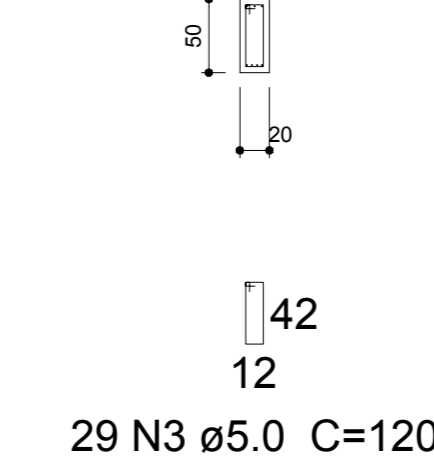
V36

ESC 1:50



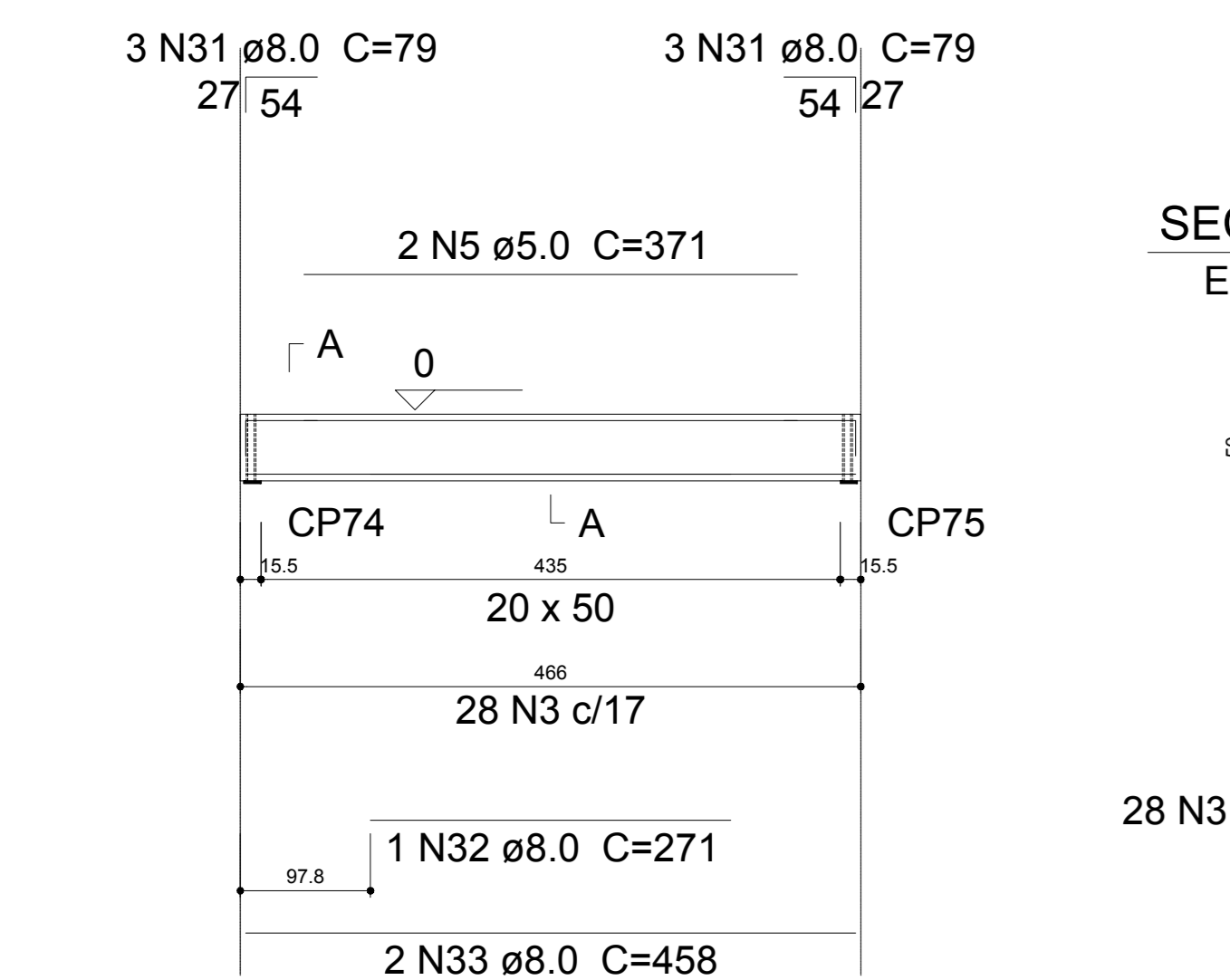
SEÇÃO A-A

ESC 1:50



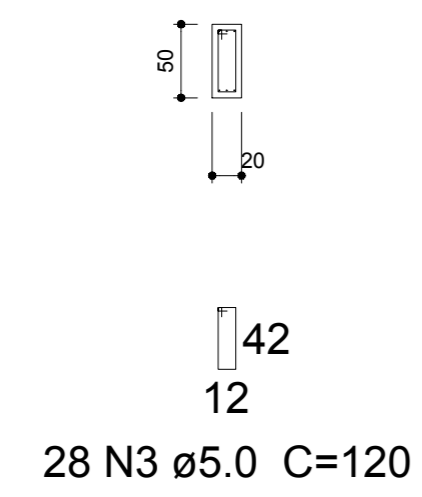
V37

ESC 1:50



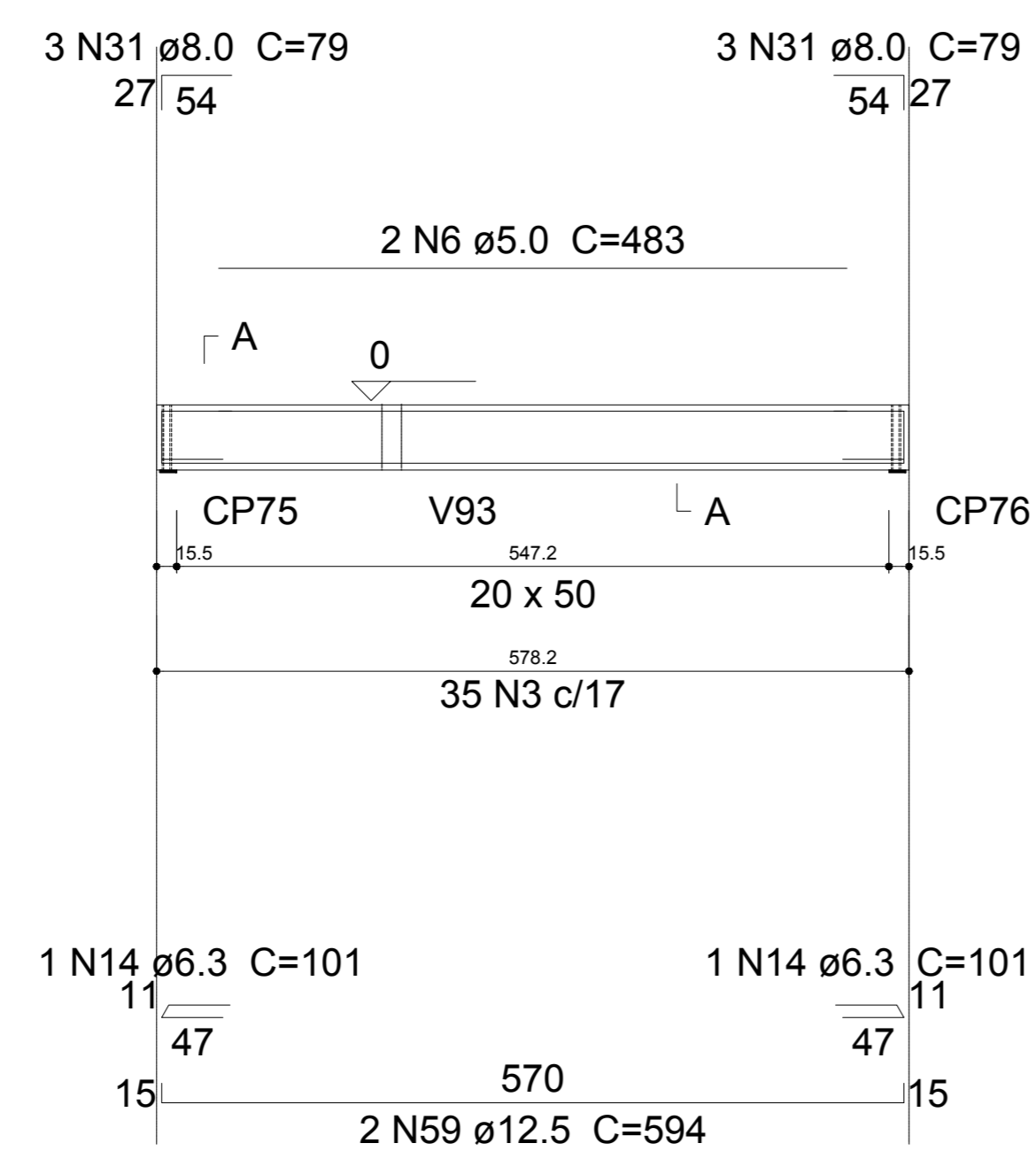
SEÇÃO A-A

ESC 1:50



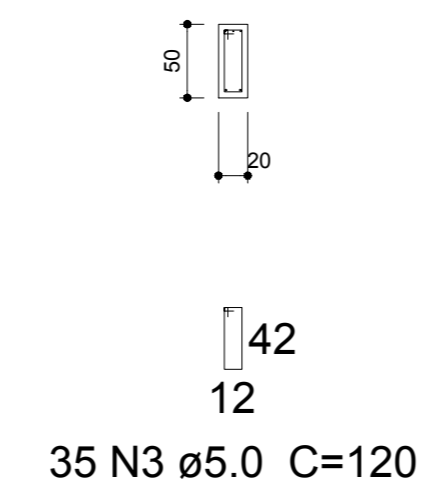
V38

ESC 1:50



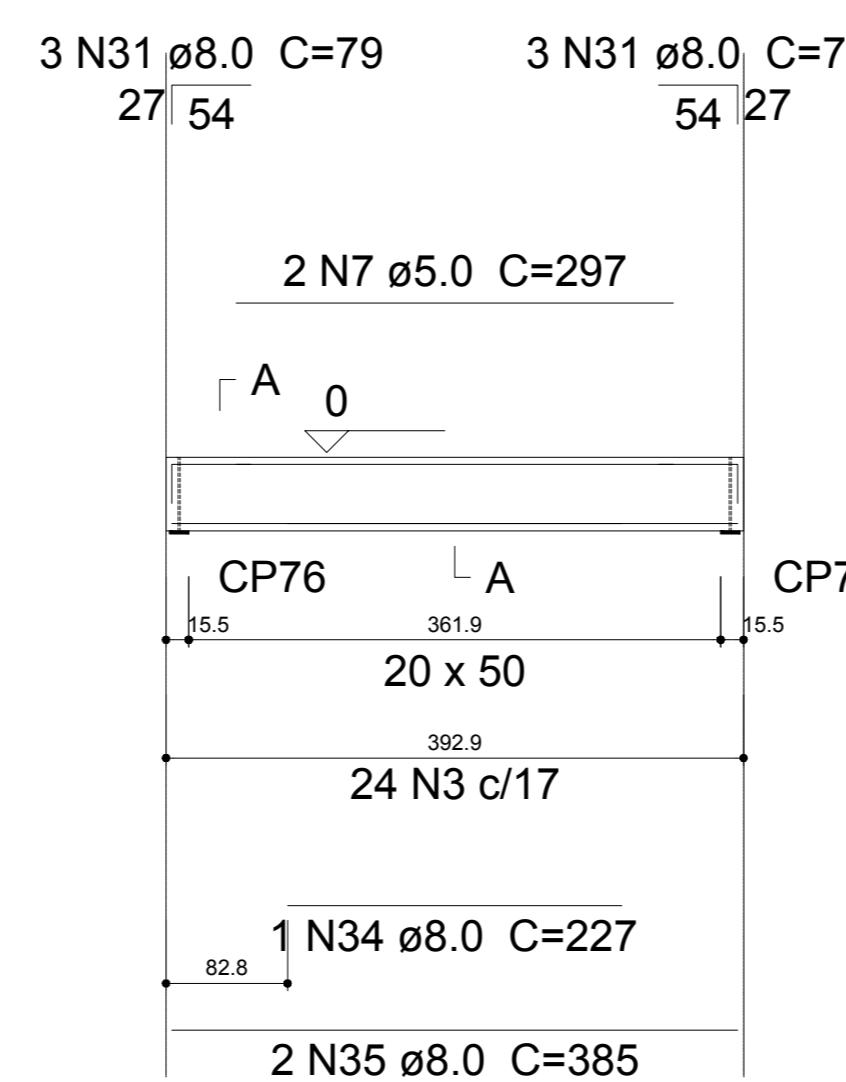
SEÇÃO A-A

ESC 1:50



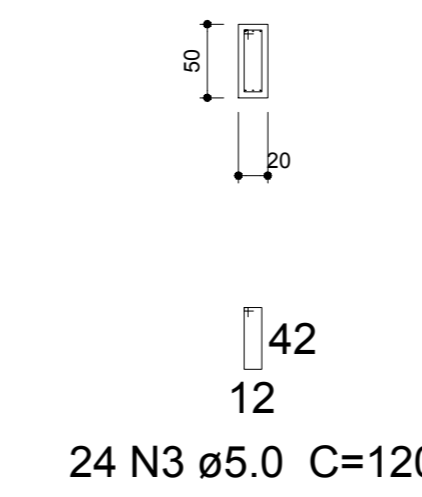
V39

ESC 1:50



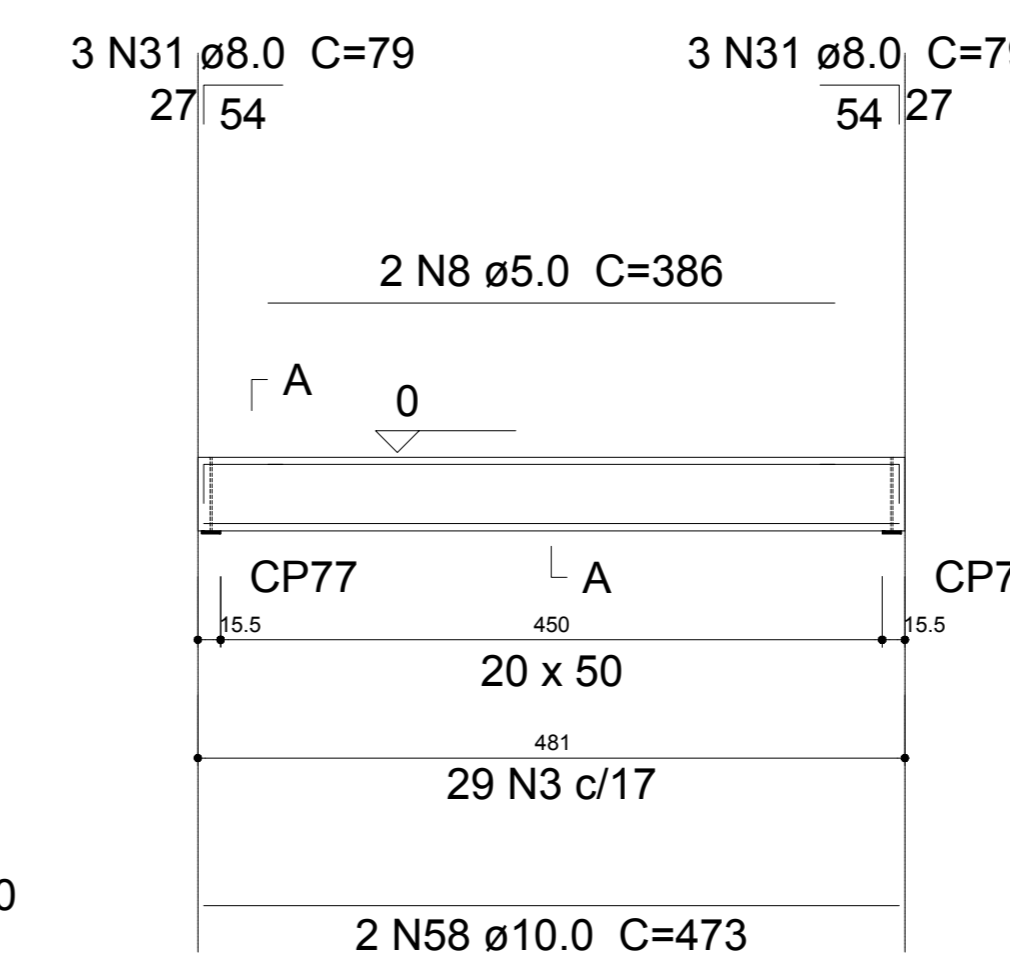
SEÇÃO A-A

ESC 1:50



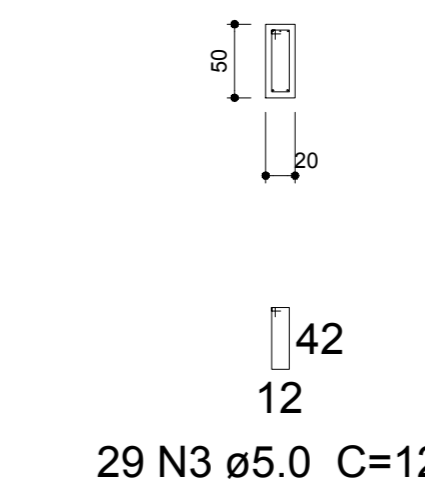
V40

ESC 1:50



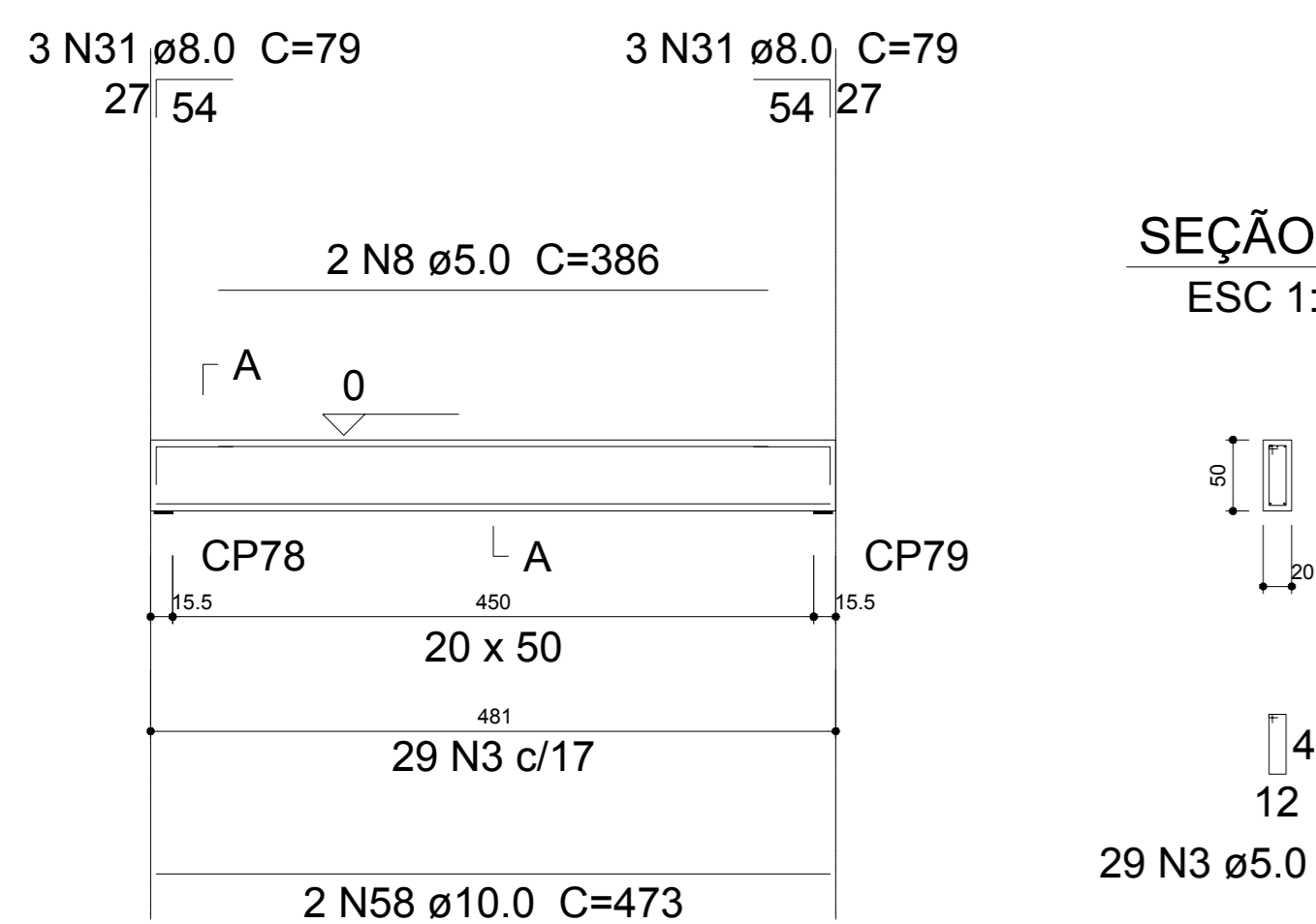
SEÇÃO A-A

ESC 1:50



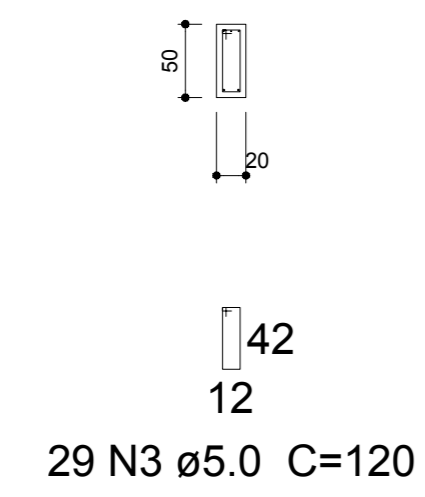
V41

ESC 1:50



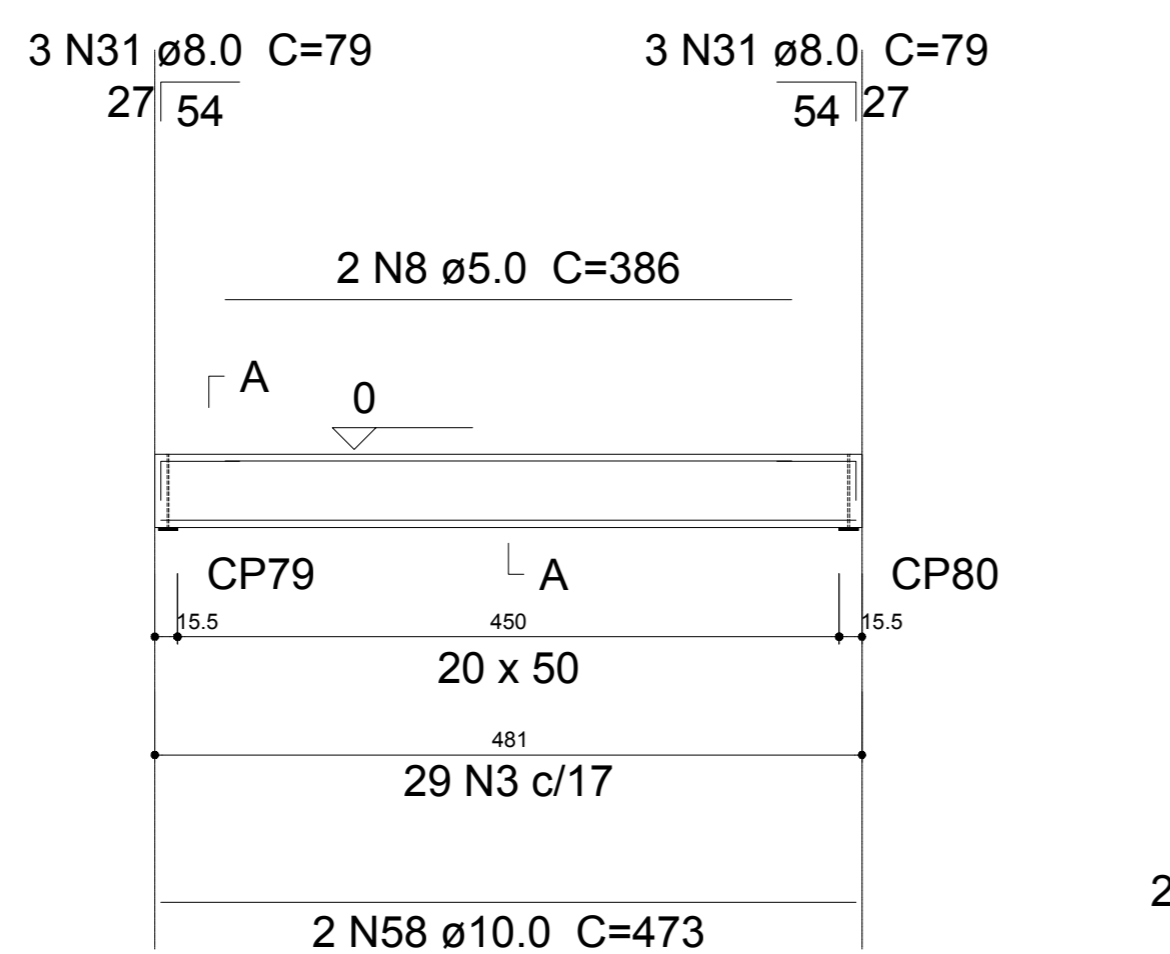
SEÇÃO A-A

ESC 1:50



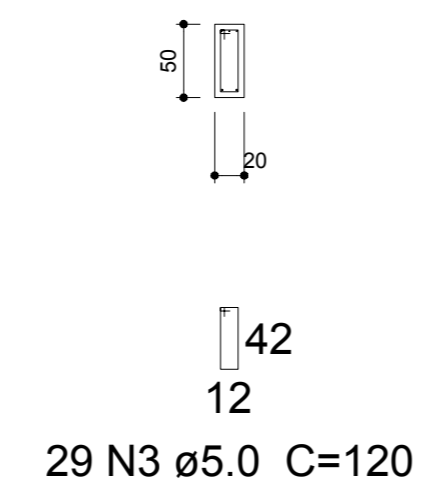
V42

ESC 1:50



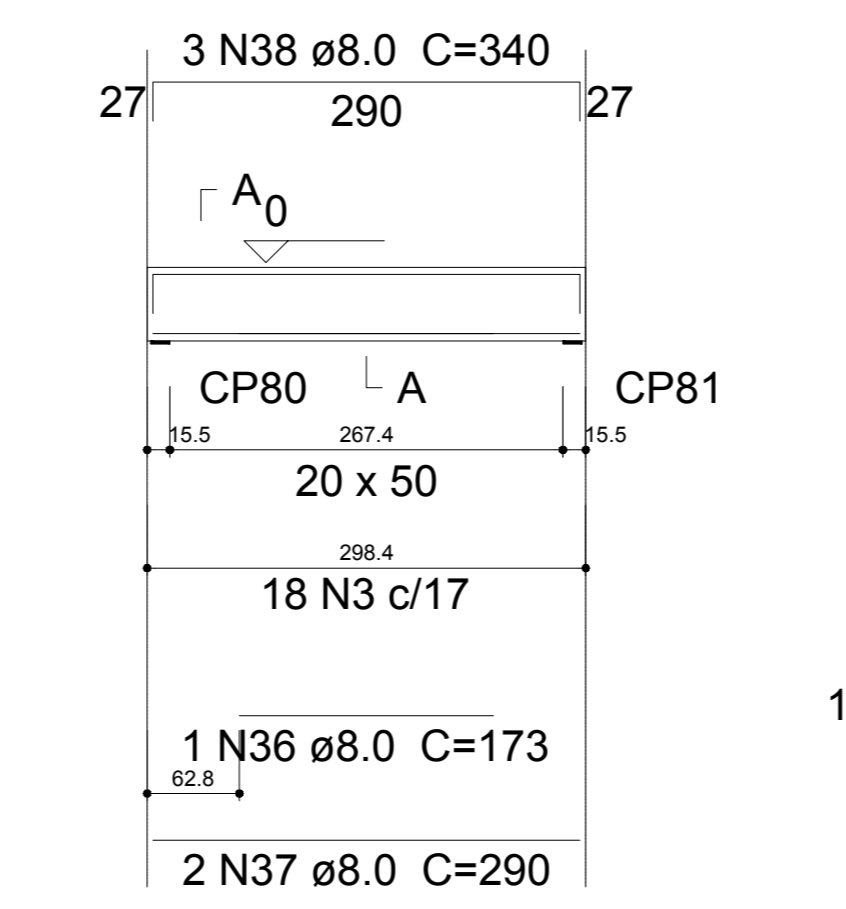
SEÇÃO A-A

ESC 1:50



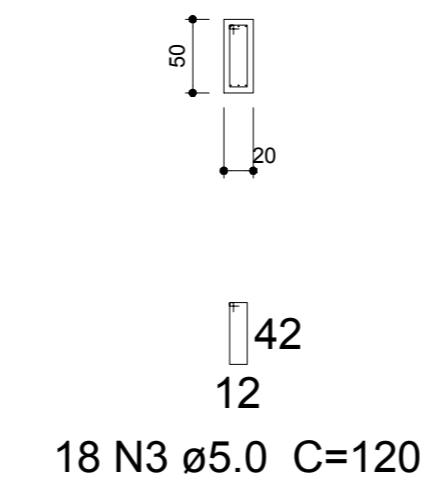
V43

ESC 1:50



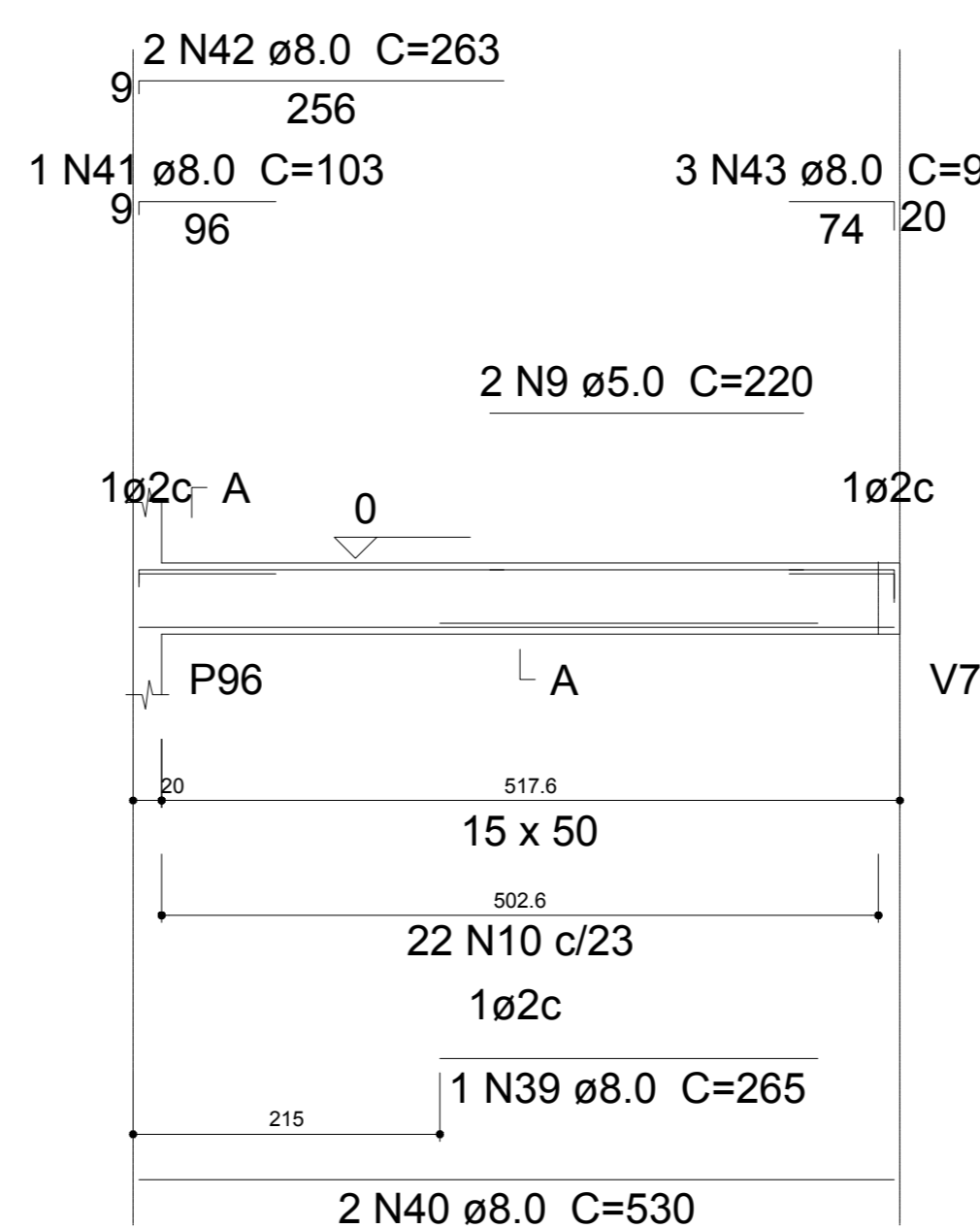
SEÇÃO A-A

ESC 1:50



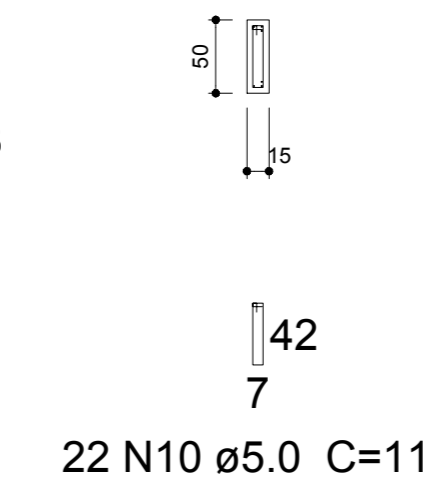
V45

ESC 1:50



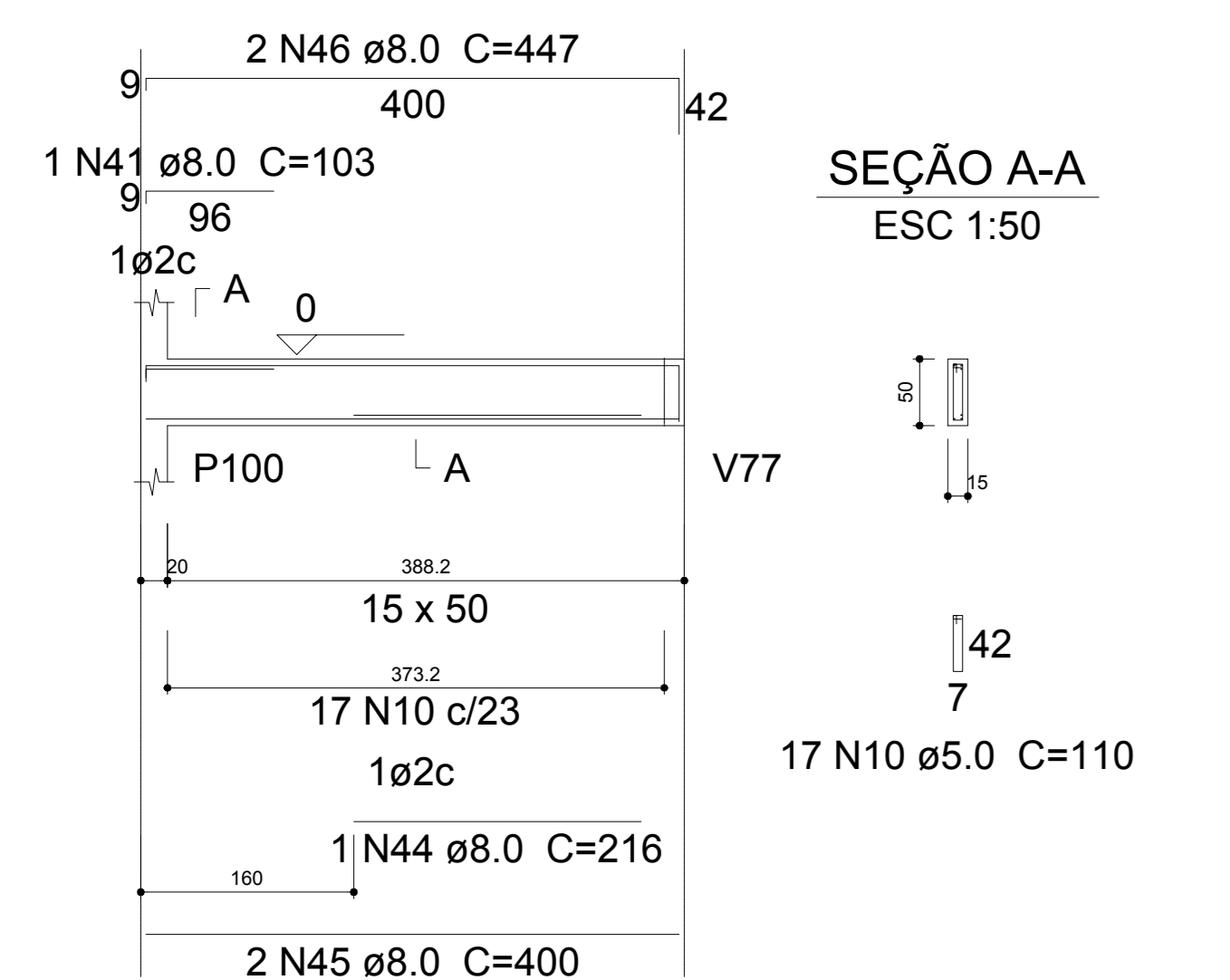
SEÇÃO A-A

ESC 1:50



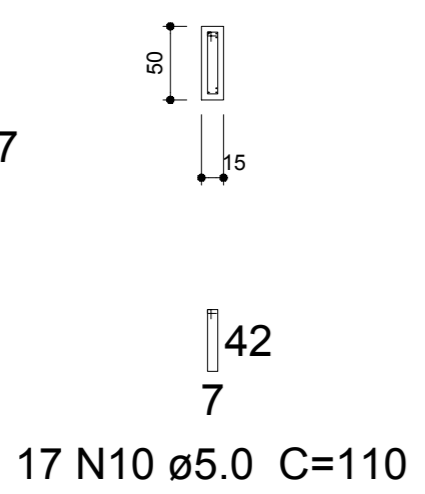
V47

ESC 1:50



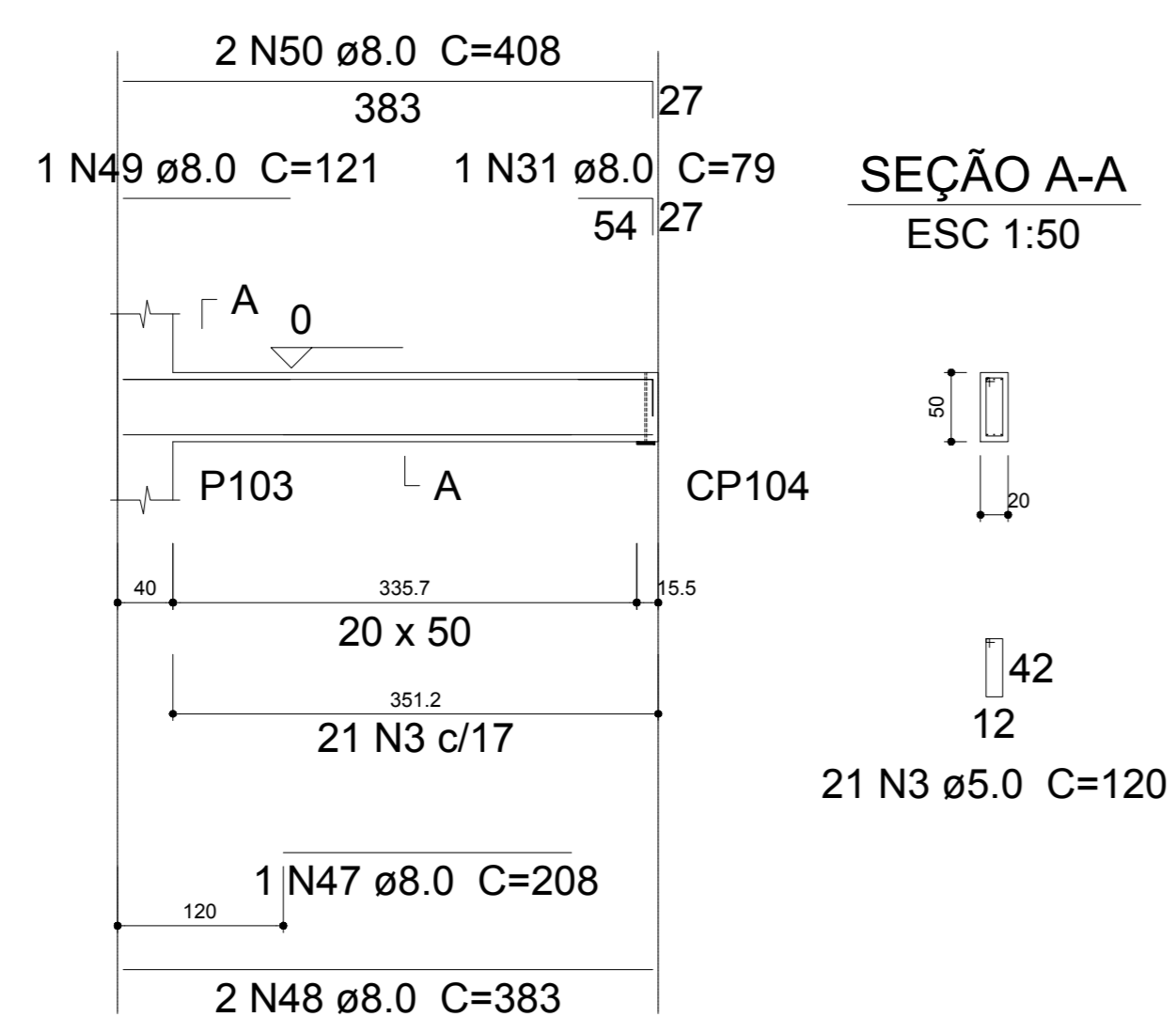
SEÇÃO A-A

ESC 1:50



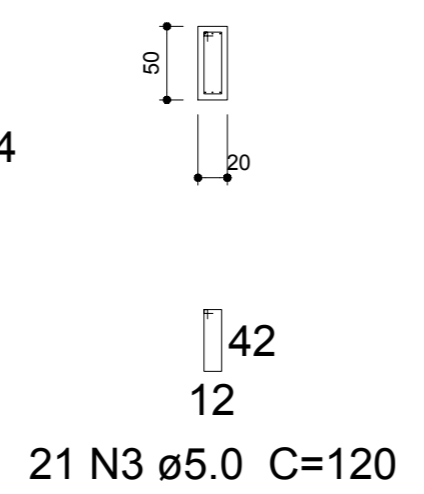
V48

ESC 1:50



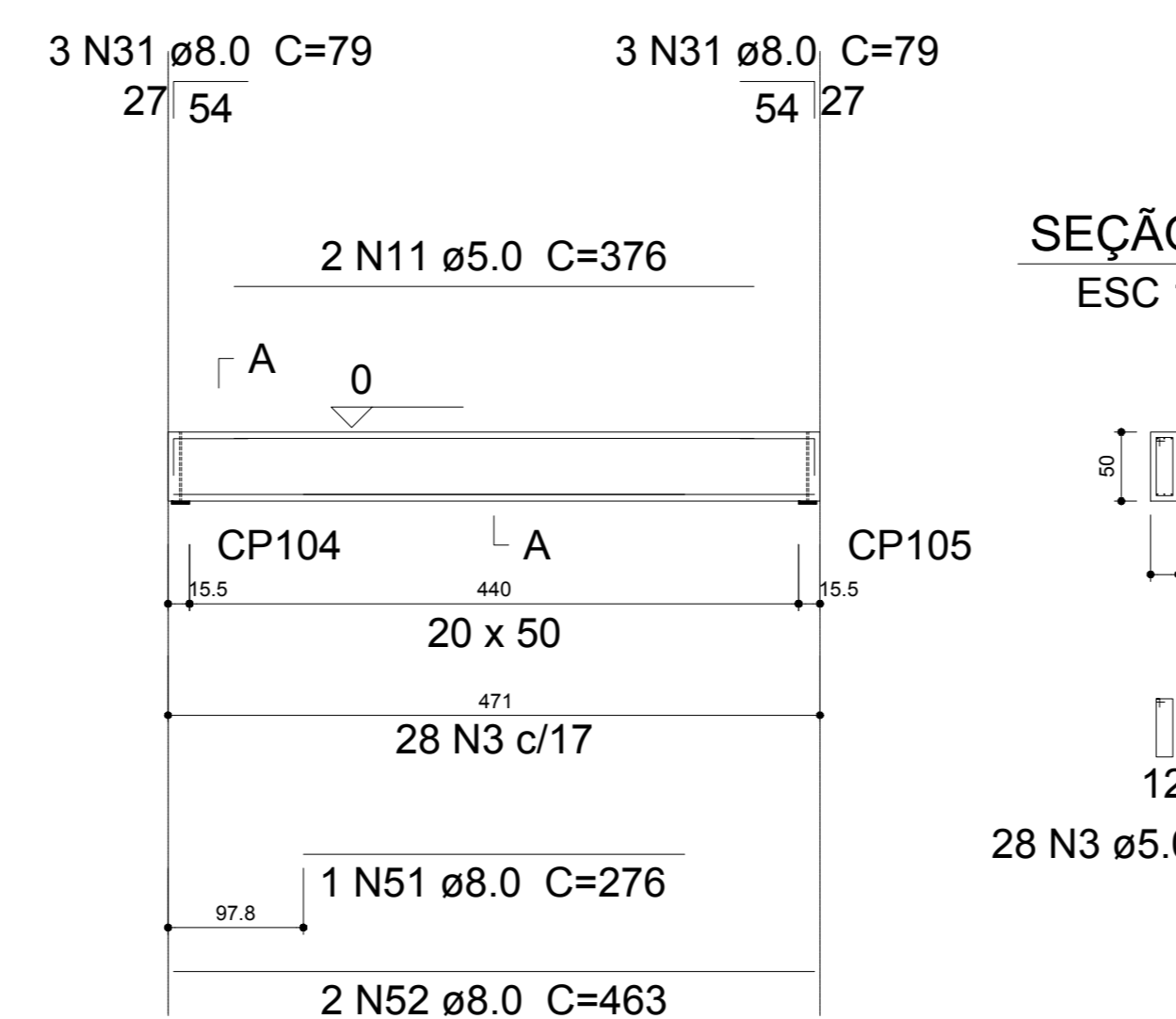
SEÇÃO A-A

ESC 1:50



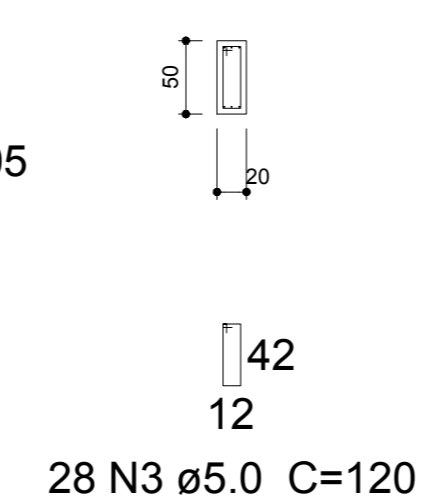
V49

ESC 1:50



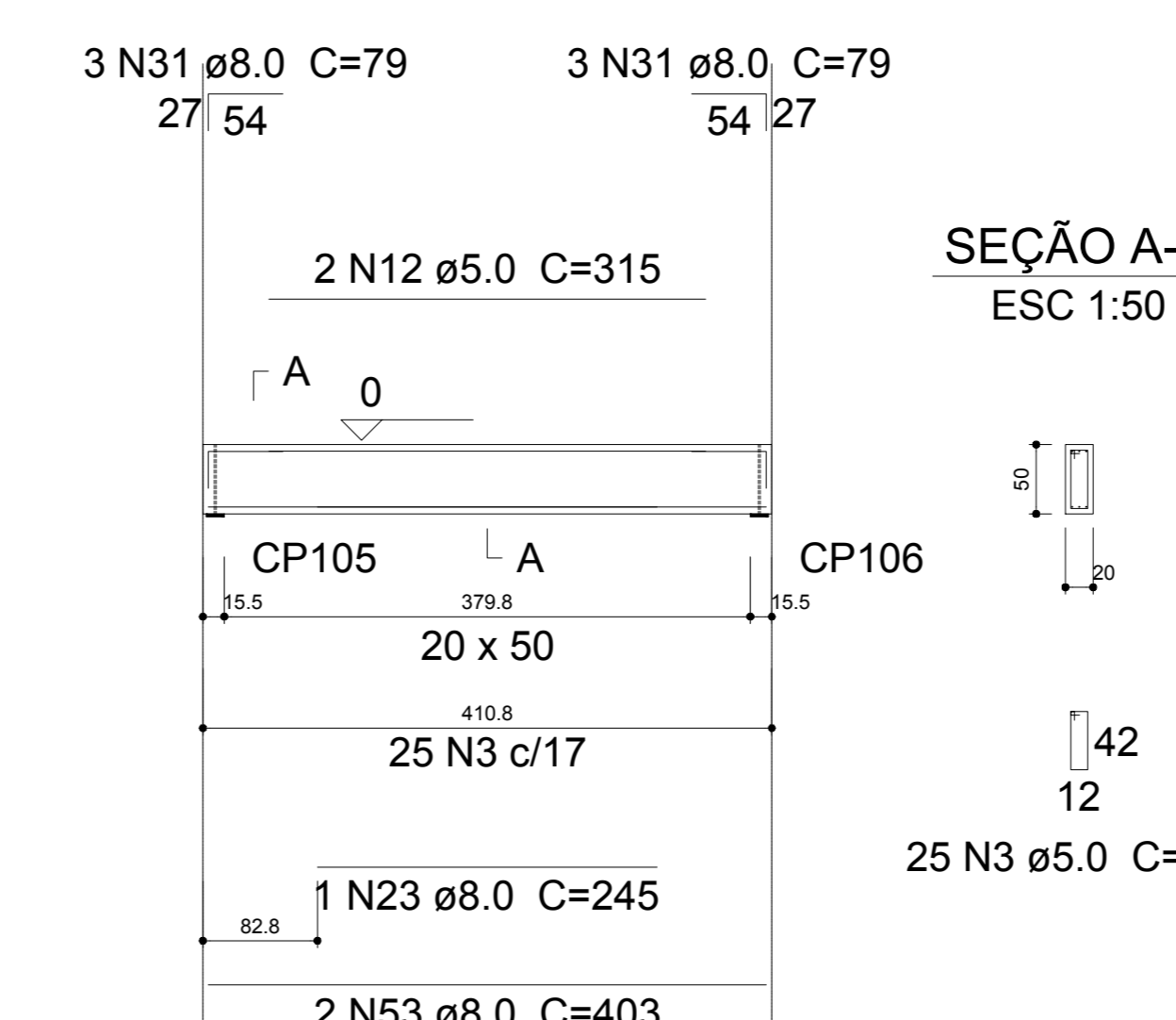
SEÇÃO A-A

ESC 1:50



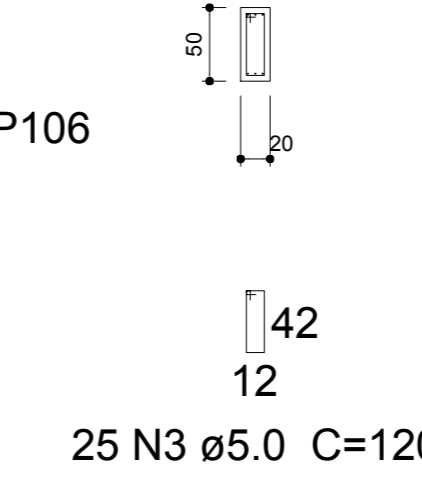
V50

ESC 1:50



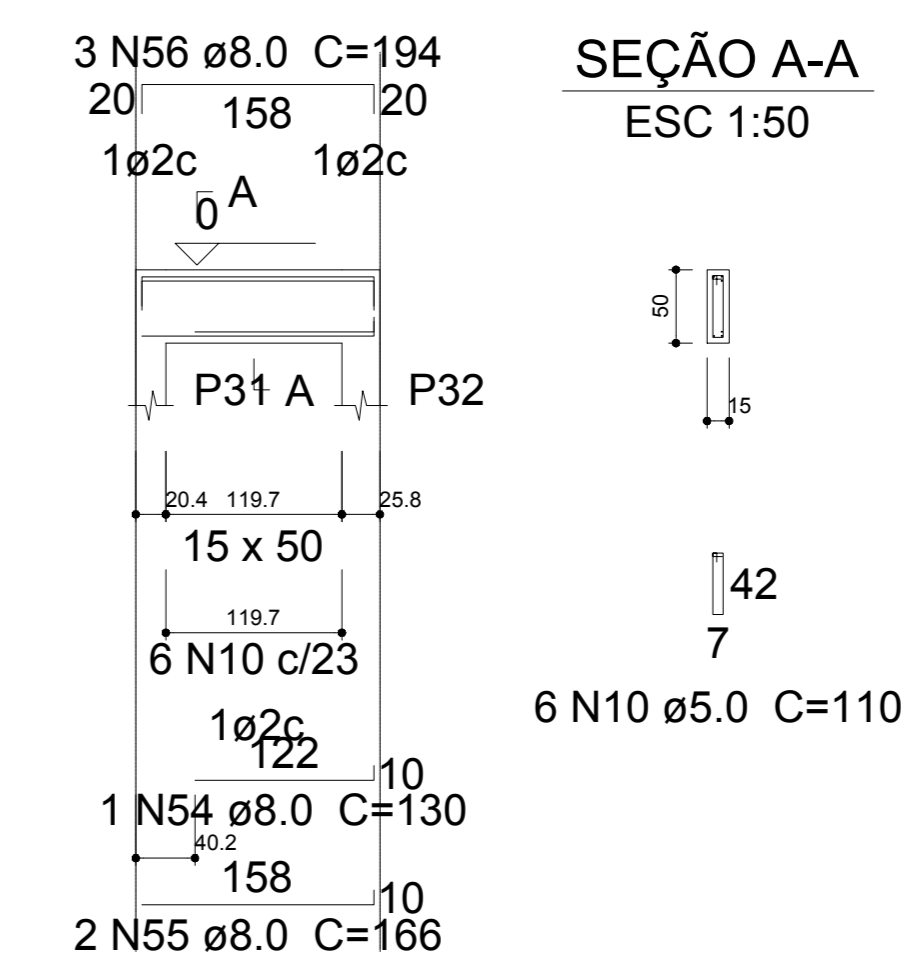
SEÇÃO A-A

ESC 1:50



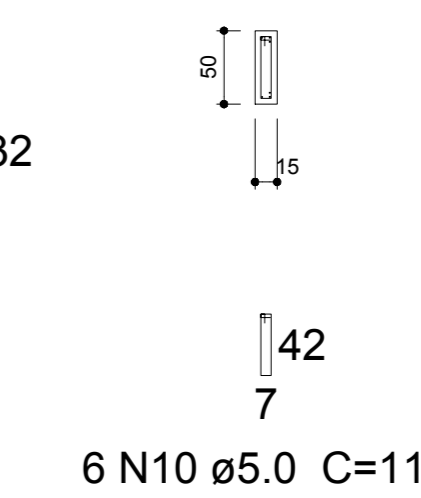
V113

ESC 1:50



SEÇÃO A-A

ESC 1:50



11 VIGAS BALDRAME ESCALA: 1/50

Relação do aço

AXO	N	DIAM (mm)	QUANT (Barras)	UNIT (cm)	C.TOTAL (cm)
CA60	1	5.0	38	100	3800
	2	5.0	2	225	450
	3	5.0	368	120	44160
	4	5.0	2	385	770
	5	5.0	2	371	742
	6	5.0	2	483	966
	7	5.0	2	297	594
	8	5.0	6	386	2316
	9	5.0	2	220	440
	10	5.0	45	110	4950
	11	5.0	2	376	752
CA50	12	5.0	2	315	630
	13	6.3	1	121	121
	14	6.3	2	101	202
	15	8.0	1	402	402
	16	8.0	1	69	69
	17	8.0	2	756	1512
	18	8.0	1	280	280
	19	8.0	1	150	150
	20	8.0	1	190	190
	21	8.0	2	759	1518
	22	8.0	1	258	258
	23	8.0	2	245	490
	24	8.0	2	1027	2054
	25	8.0	1	149	149
	26	8.0	2	246	492
	27	8.0	1	388	388
	28	8.0	2	443	886
	29	8.0	2	285	570
	30	8.0	2	472	944
	31	8.0	55	79	4345
	32	8.0	1	271	271
	33	8.0	2	458	916
	34	8.0	1	227	227
	35	8.0	2	385	770
	36	8.0	1	173	173
	37	8.0	2	290	580
	38	8.0	3	340	1020
	39	8.0	1	265	265
	40	8.0	2	530	1060
	41	8.0	2	103	206
	42	8.0	2	263	526
	43	8.0	3	92	276
	44	8.0	1	216	216
	45	8.0	2	400	800
	46	8.0	2	447	894
	47	8.0	1	208	208
	48	8.0	2	383	766
	49	8.0	1	121	121
	50	8.0	2	408	816
	51	8.0	1	276	276
	52	8.0	2	463	926
	53	8.0	2	403	806
	54	8.0	1	130	130
	55	8.0	2	166	332
	56	8.0	3	194	582
	57	10.0	2	704	1408
	58	10.0	6	473	2838
	59	12.5	2	594	1188

Resumo do aço

AXO	DIAM (mm)	C.TOTAL (m)	PESO + 10 % (kg)
CA50	6.3	3.3	0.9
	8.0	278.6	120.9
	10.0	42.5	28.8
	12.5	11.9	12.6
CA60	5.0	605.7	102.7
	PESO TOTAL (kg)		
CA50	163.2		
CA60	102.7		

Volume de concreto (C-35) = 7.66 m³
Área de forma = 94.98 m²

Engeobra
ENGENHARIA E INFRAESTRUTURA

Rua Primo Taccu, 350, Bairro Taccu - Jansen-SC
E-mail: engenharia.engeobra@gmail.com - Tel: (49) 9 9976-0228

OBRA: GINÁSIO SANTA TEREZINHA

LOCAL: Rua Achilles Biassotto, s/n, Bairro Guarany - Xaxim - SC

PROJETO: PROJETO ESTRUTURAL

ESPECIFICAÇÕES: Vigas baldrame	DATA: 07/2021	DESENHO: T.L
ÁREA: 3.544,73 m ²	PRANCHA: 07	127
ESCALA: Indicada	Projeto:	Proprietário:

SAMUEL SPASSATO OUTEIRO Eng° Civil - CREA SC 133319-7
PREFEITURA MUNICIPAL DE XAXIM CNPJ.82.854.670/0001-30