

Relação do aço

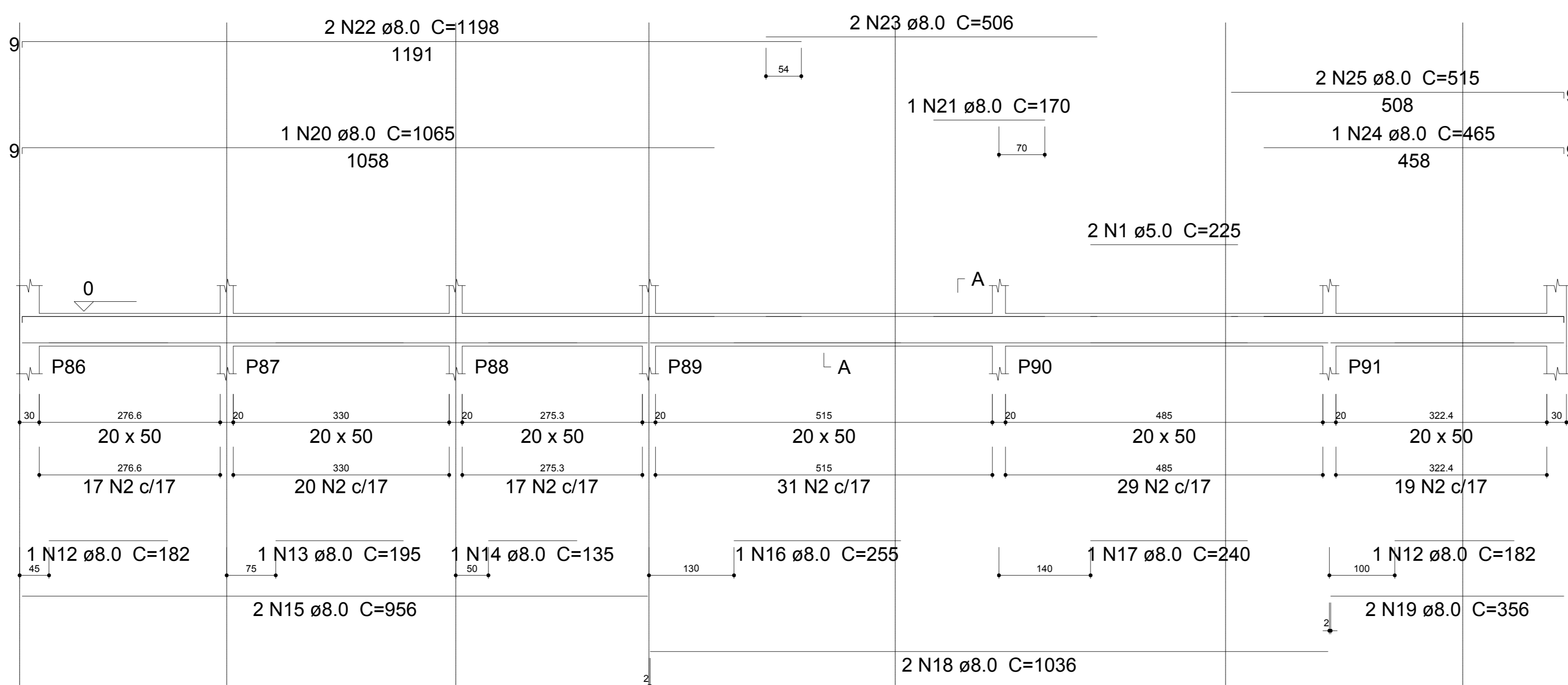
AÇO	N	DIAM (mm)	QUANT (Barras)	UNIT (cm)	C.TOTAL (cm)
CA60	1	5.0	2	225	450
	2	5.0	223	120	26760
	3	5.0	2	333	666
	4	5.0	67	110	7370
	5	5.0	184	90	16560
	6	5.0	2	391	782
	7	5.0	2	302	604
	8	5.0	2	248	496
	9	5.0	2	228	456
	10	5.0	4	253	1012
	11	5.0	2	411	822
CA50	12	8.0	2	182	364
	13	8.0	1	195	195
	14	8.0	1	135	135
	15	8.0	2	956	1912
	16	8.0	1	255	255
	17	8.0	1	240	240
	18	8.0	2	1036	2072
	19	8.0	2	356	712
	20	8.0	1	1065	1065
	21	8.0	1	170	170
	22	8.0	2	1198	2396
	23	8.0	2	506	1012
	24	8.0	1	465	465
	25	8.0	2	515	1030
	26	8.0	1	288	288
	27	8.0	2	508	1016
	28	8.0	2	83	166
	29	8.0	2	148	296
	30	8.0	3	72	216
	31	8.0	2	411	822
	32	8.0	2	471	942
	33	8.0	1	186	186
	34	8.0	2	304	608
	35	8.0	3	354	1062
	36	8.0	12	79	948
	37	8.0	1	232	232
	38	8.0	2	390	780
	39	8.0	1	181	181
	40	8.0	2	298	596
	41	8.0	3	348	1044
	42	8.0	2	263	526
	43	8.0	10	560	5600
	44	8.0	2	143	286
	45	8.0	2	136	272
	46	8.0	2	196	392
	47	8.0	1	253	253
	48	8.0	1	121	121
	49	8.0	2	176	352
	50	8.0	1	156	156
	51	8.0	2	423	846
	52	8.0	4	447	1788
	53	8.0	2	568	1136
	54	8.0	2	144	288
	55	8.0	2	179	358
	56	8.0	2	143	286
	57	8.0	2	183	366
	58	8.0	1	130	130
	59	8.0	1	155	155
	60	8.0	2	190	380
	61	8.0	2	638	1276
	62	8.0	2	660	1320
	63	8.0	1	243	243
	64	8.0	2	590	1180
	65	10.0	2	478	956
	66	10.0	2	176	352
	67	10.0	1	151	151
	68	10.0	2	201	402
	69	10.0	1	254	254
	70	10.0	2	411	822
	71	10.0	1	136	136
	72	10.0	1	126	126
	73	10.0	2	560	1120

Resumo do aço

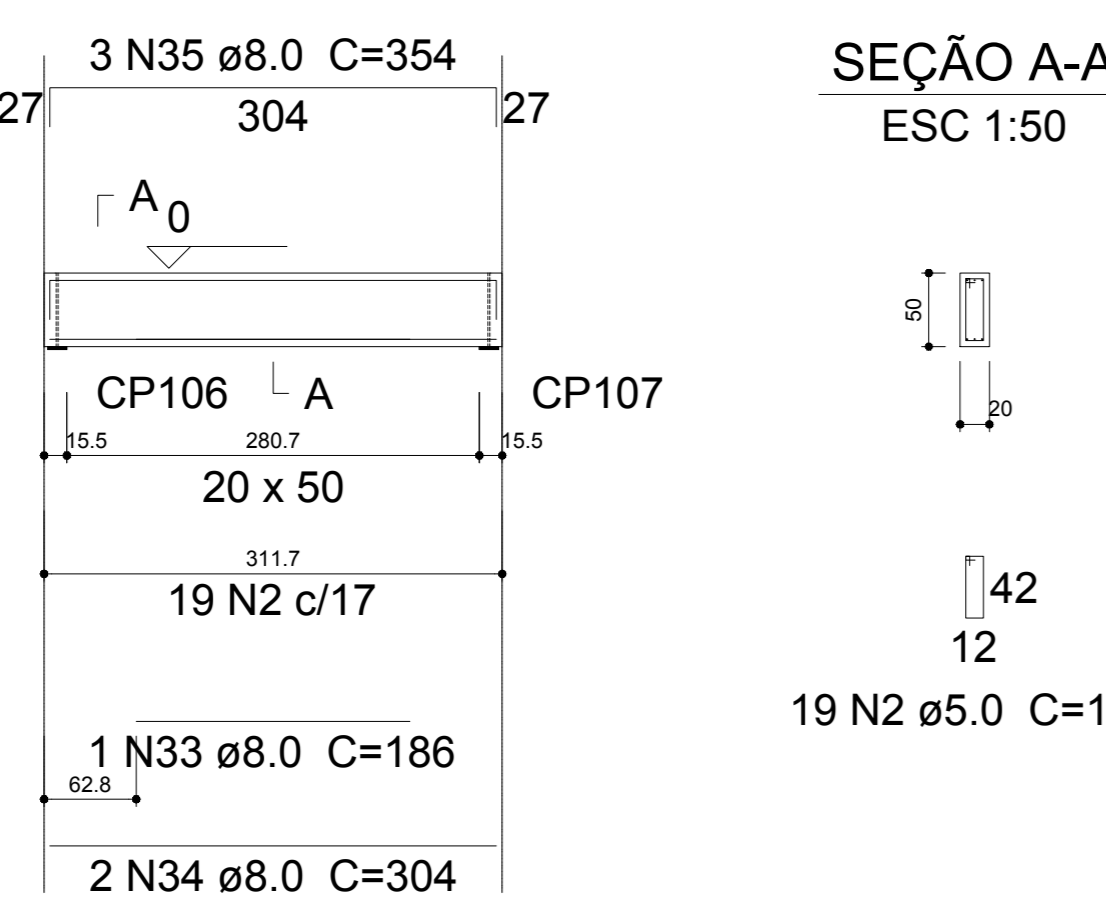
AÇO	DIAM (mm)	C.TOTAL (m)	PESO + 10% (kg)
CA50	8.0	391.2	169.8
	10.0	43.2	29.3
CA60	5.0	559.8	94.9
PESO TOTAL (kg)			
CA50			199.1
CA60			94.9

Volume de concreto (C-35) = 7.62 m³
Área de forma = 105.17 m²

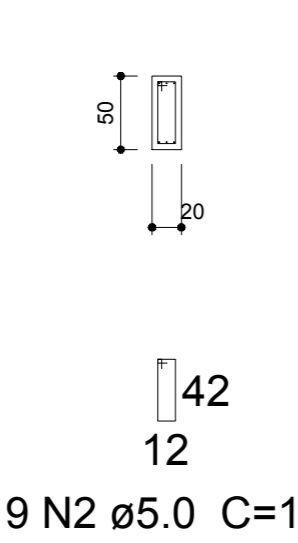
V44 ESC 1:50



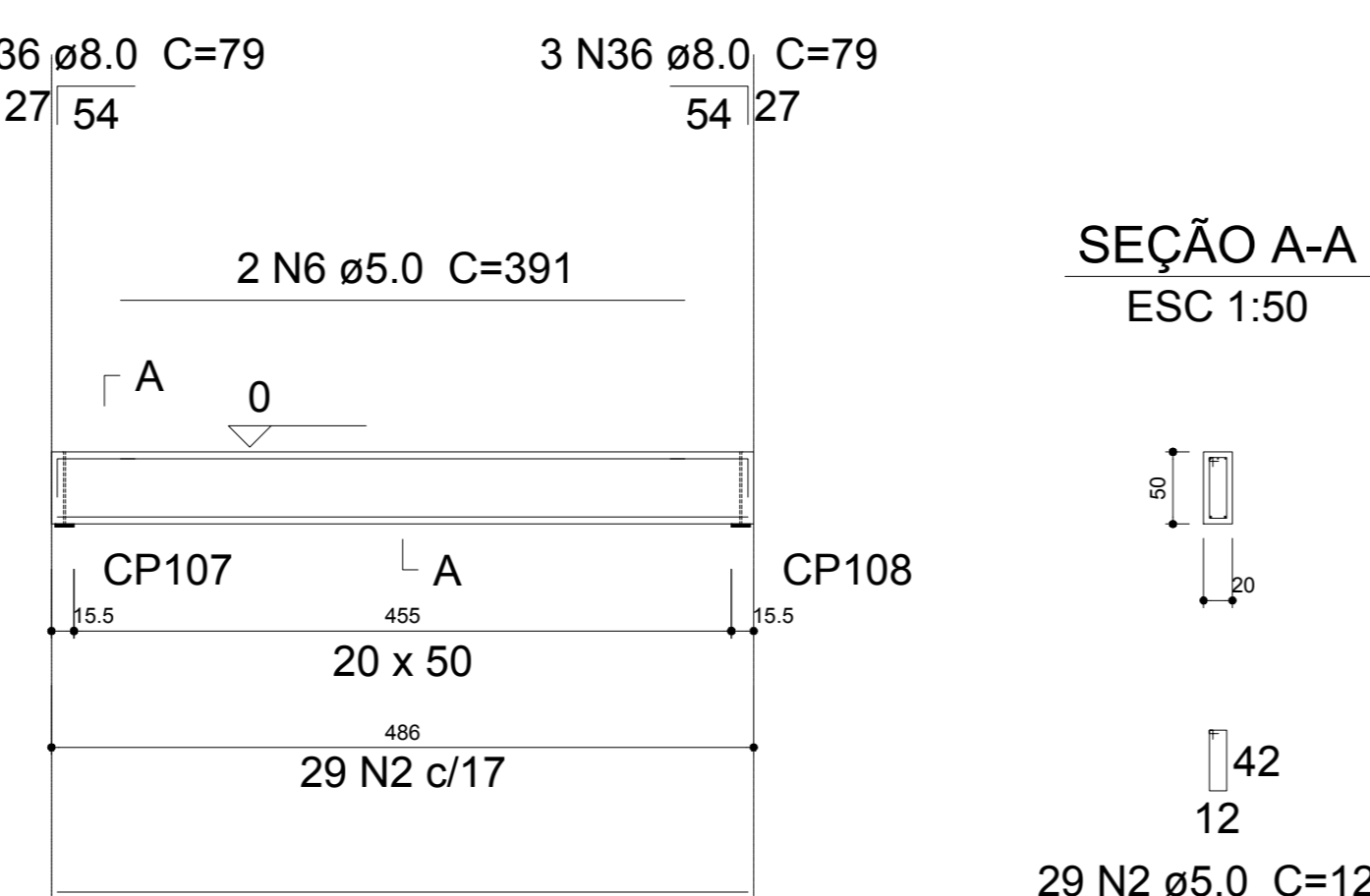
V51 ESC 1:50



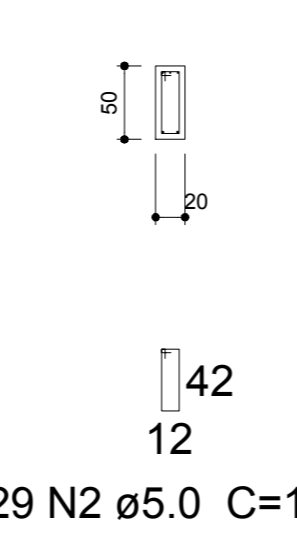
SEÇÃO A-A ESC 1:50



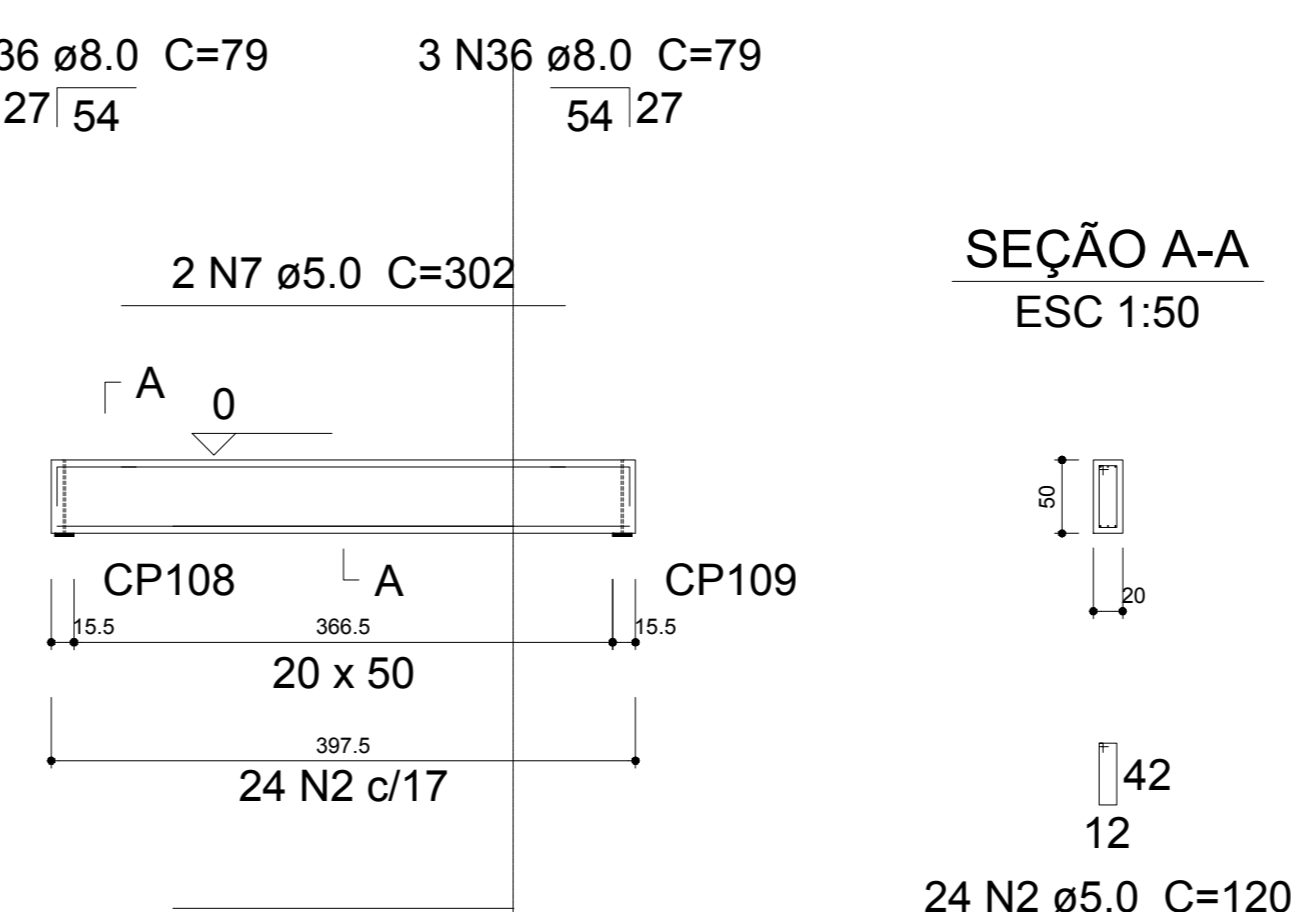
V52 ESC 1:50



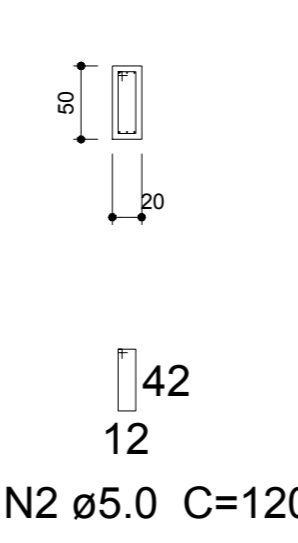
SEÇÃO A-A ESC 1:50



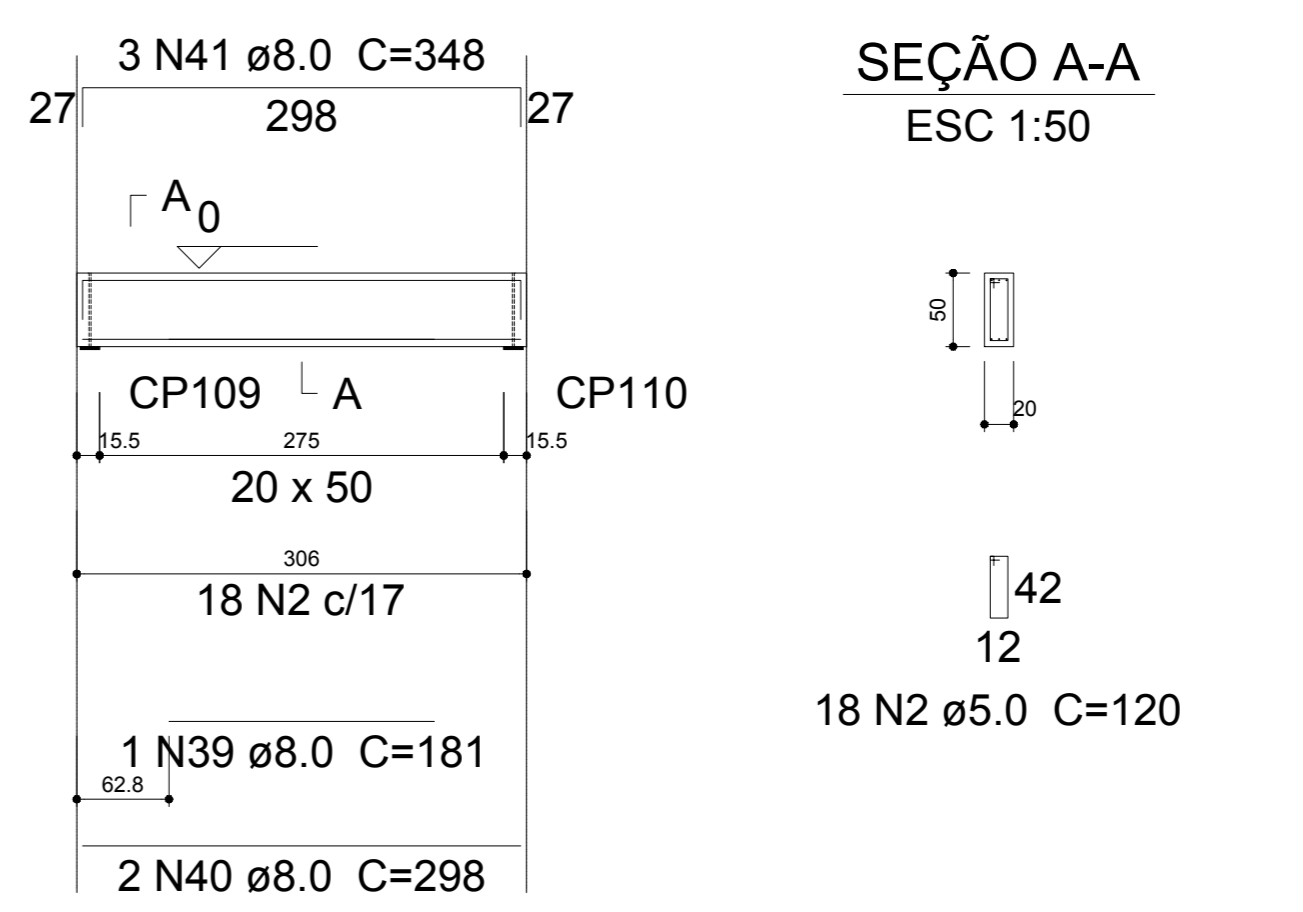
V53 ESC 1:50



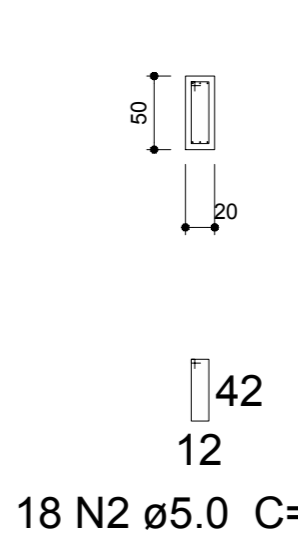
SEÇÃO A-A ESC 1:50



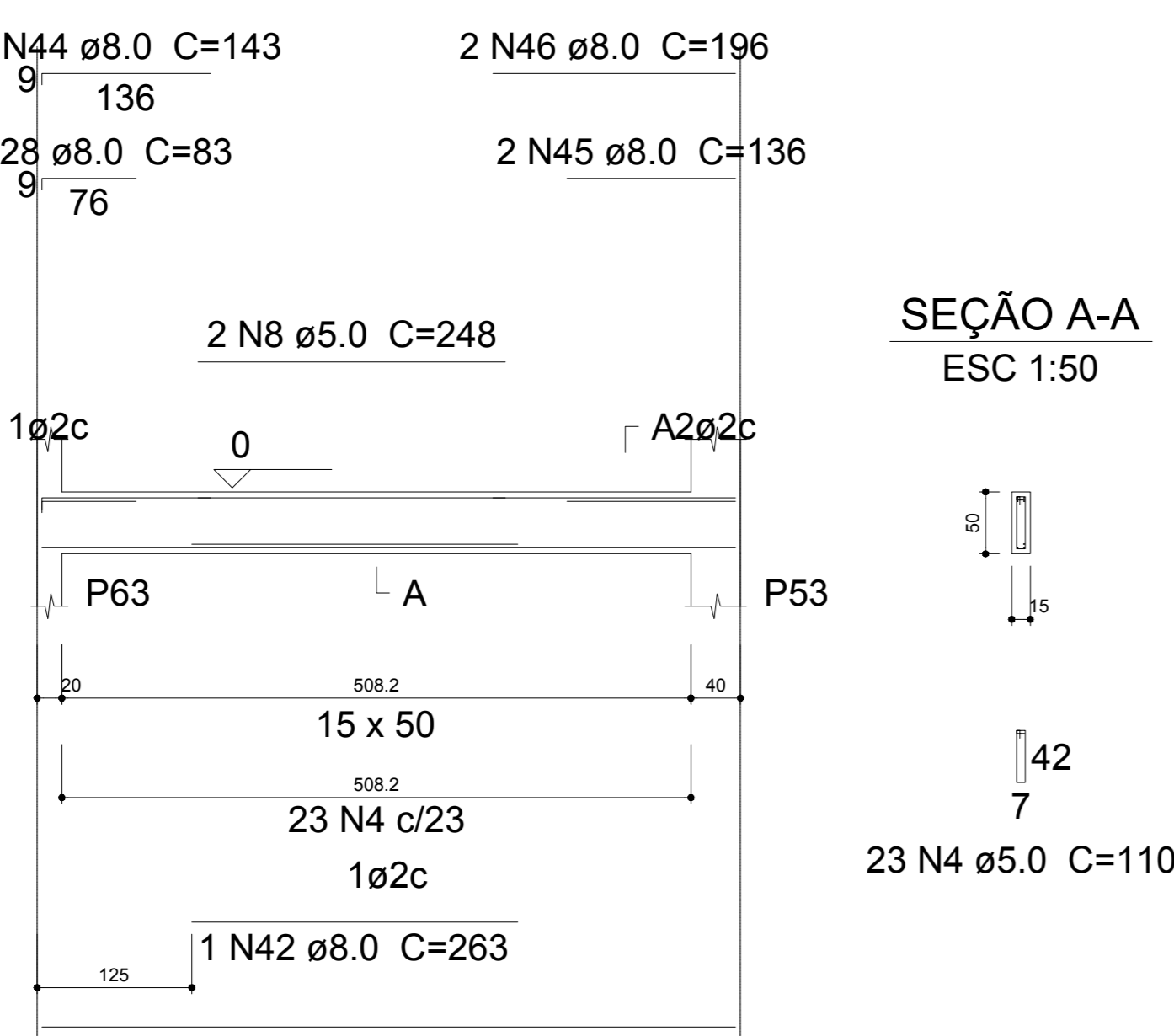
V54 ESC 1:50



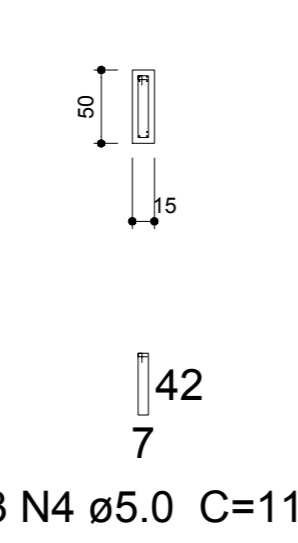
SEÇÃO A-A ESC 1:50



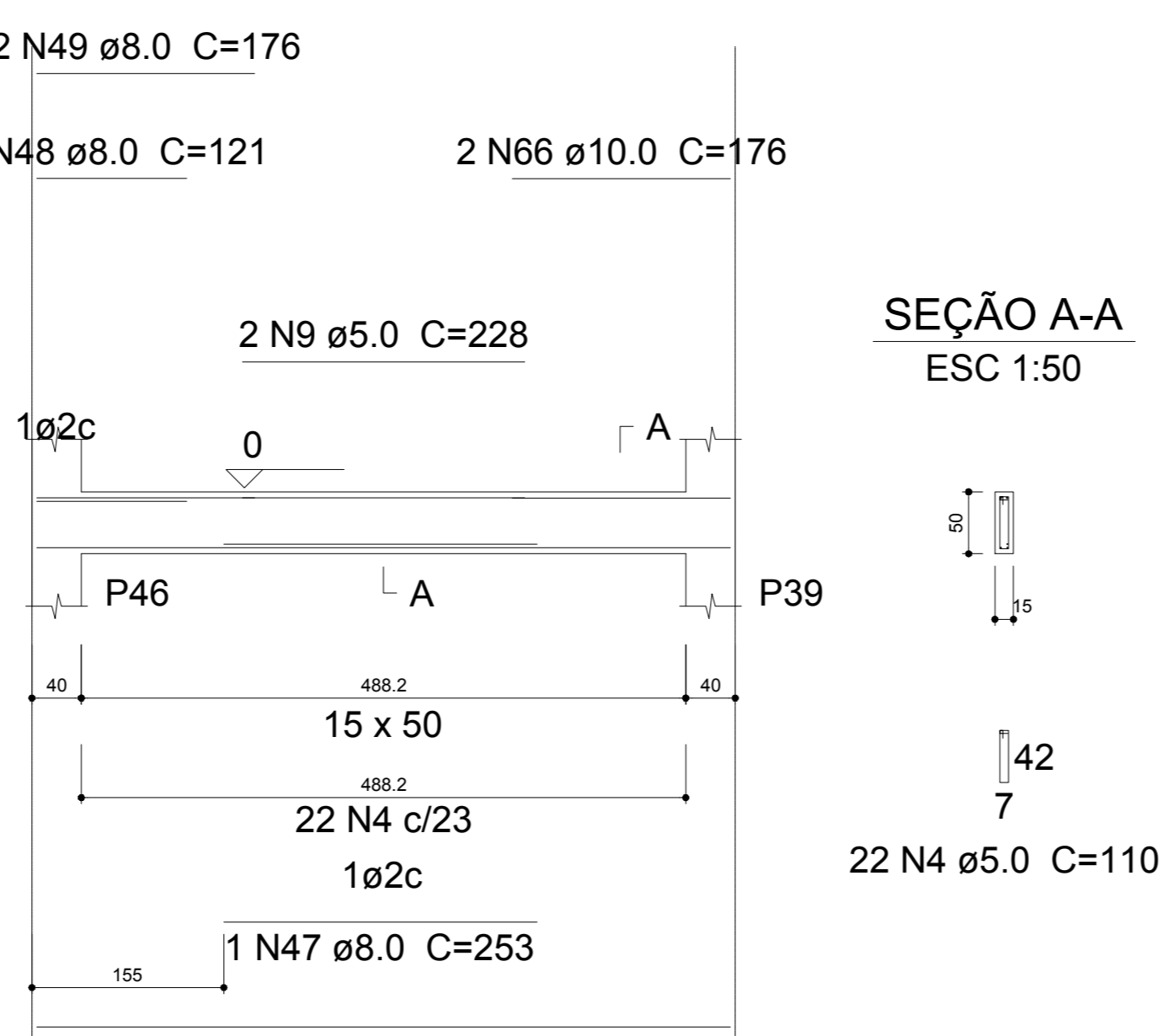
V55 ESC 1:50



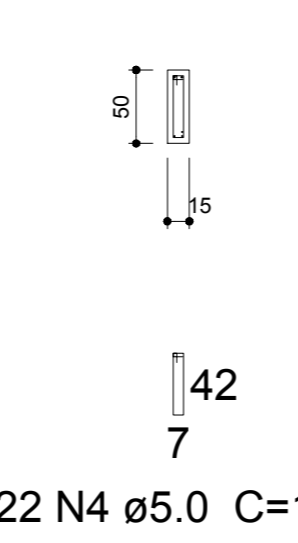
SEÇÃO A-A ESC 1:50



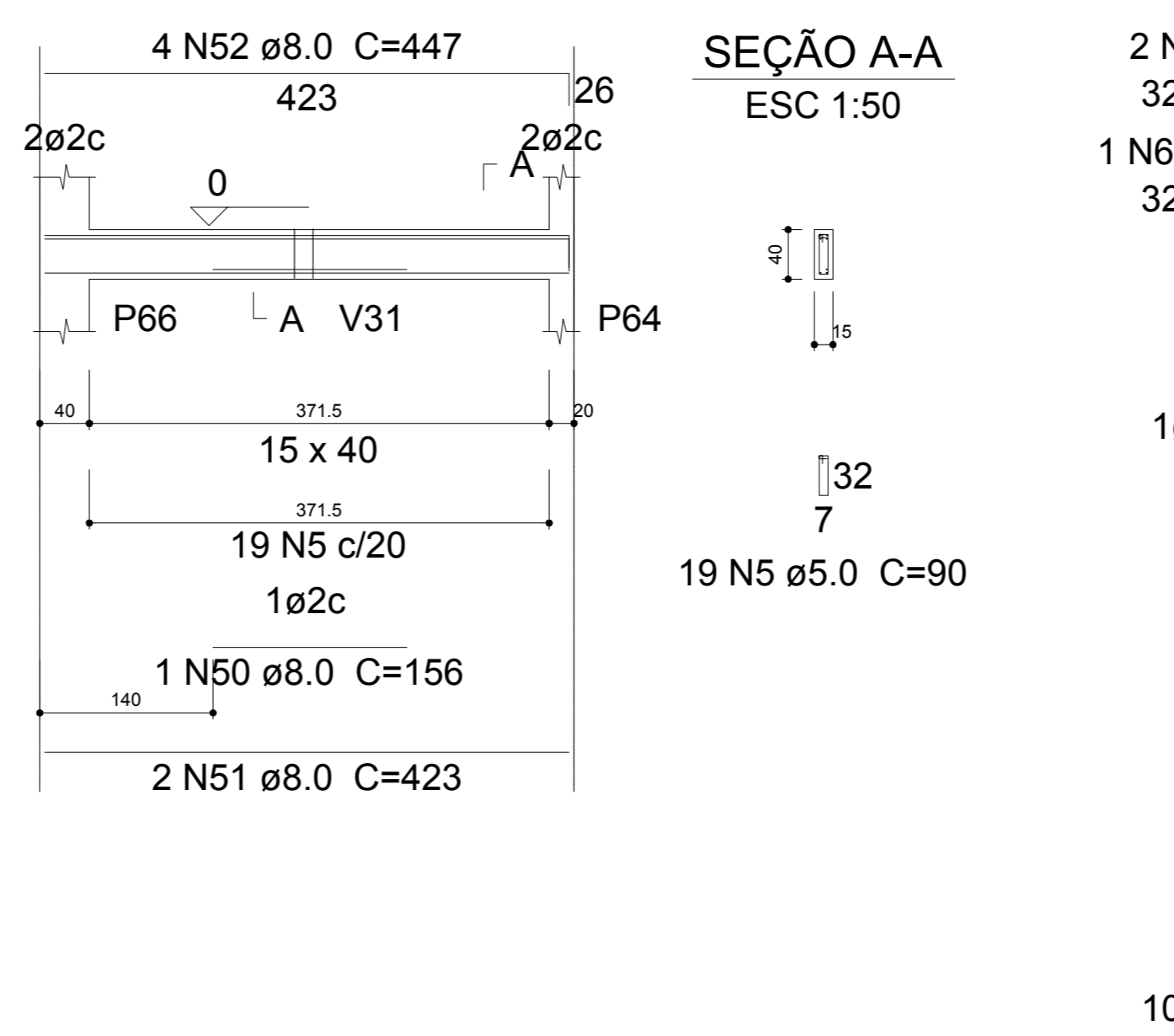
V56 ESC 1:50



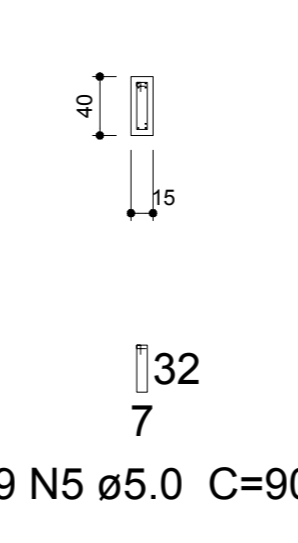
SEÇÃO A-A ESC 1:50



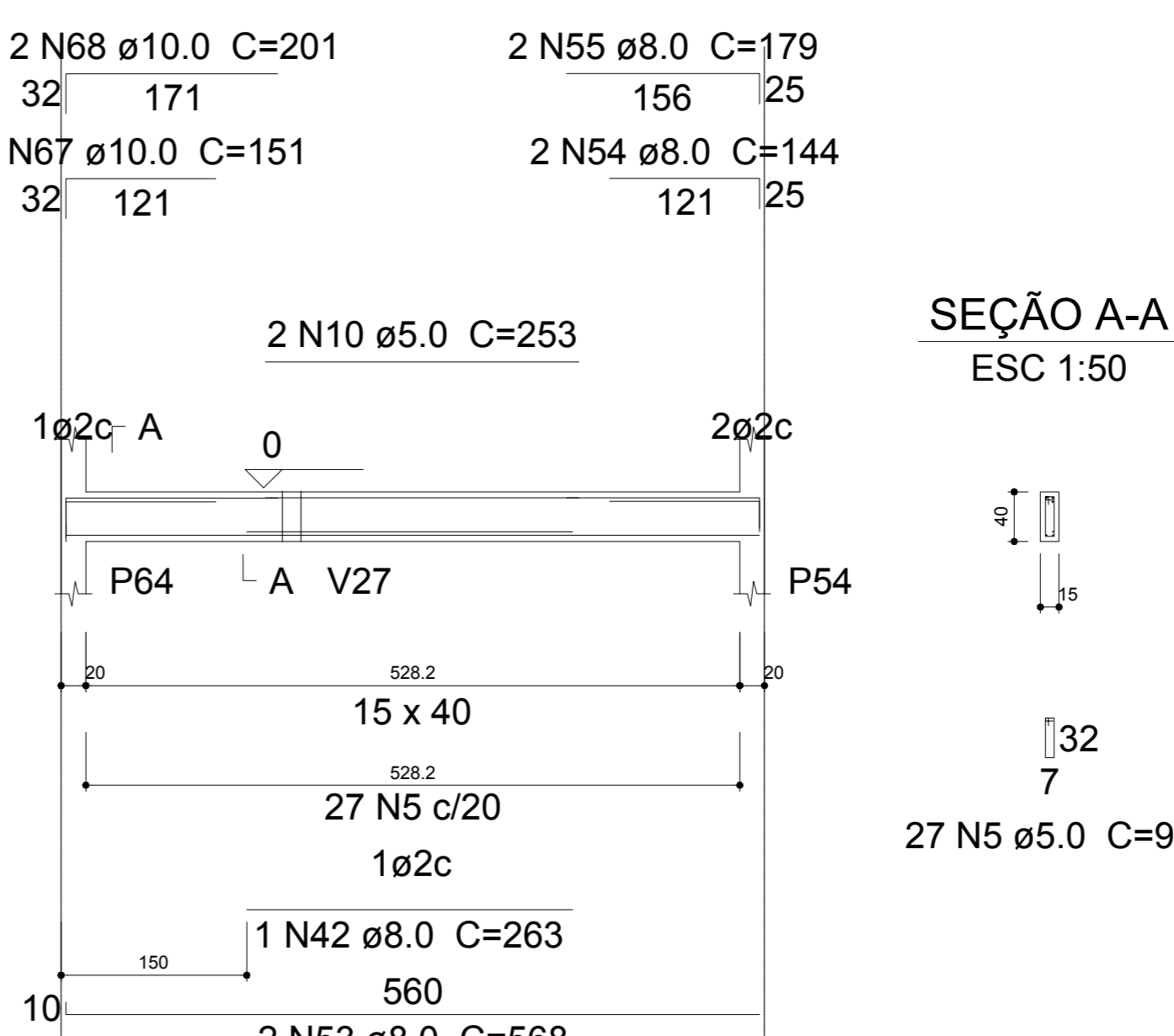
V58 ESC 1:50



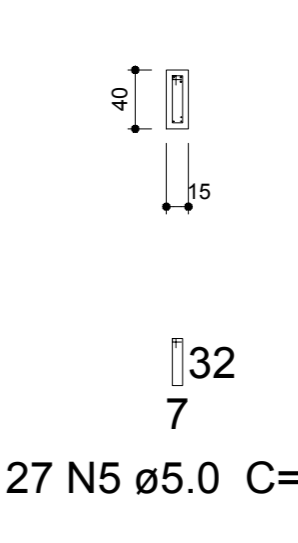
SEÇÃO A-A ESC 1:50



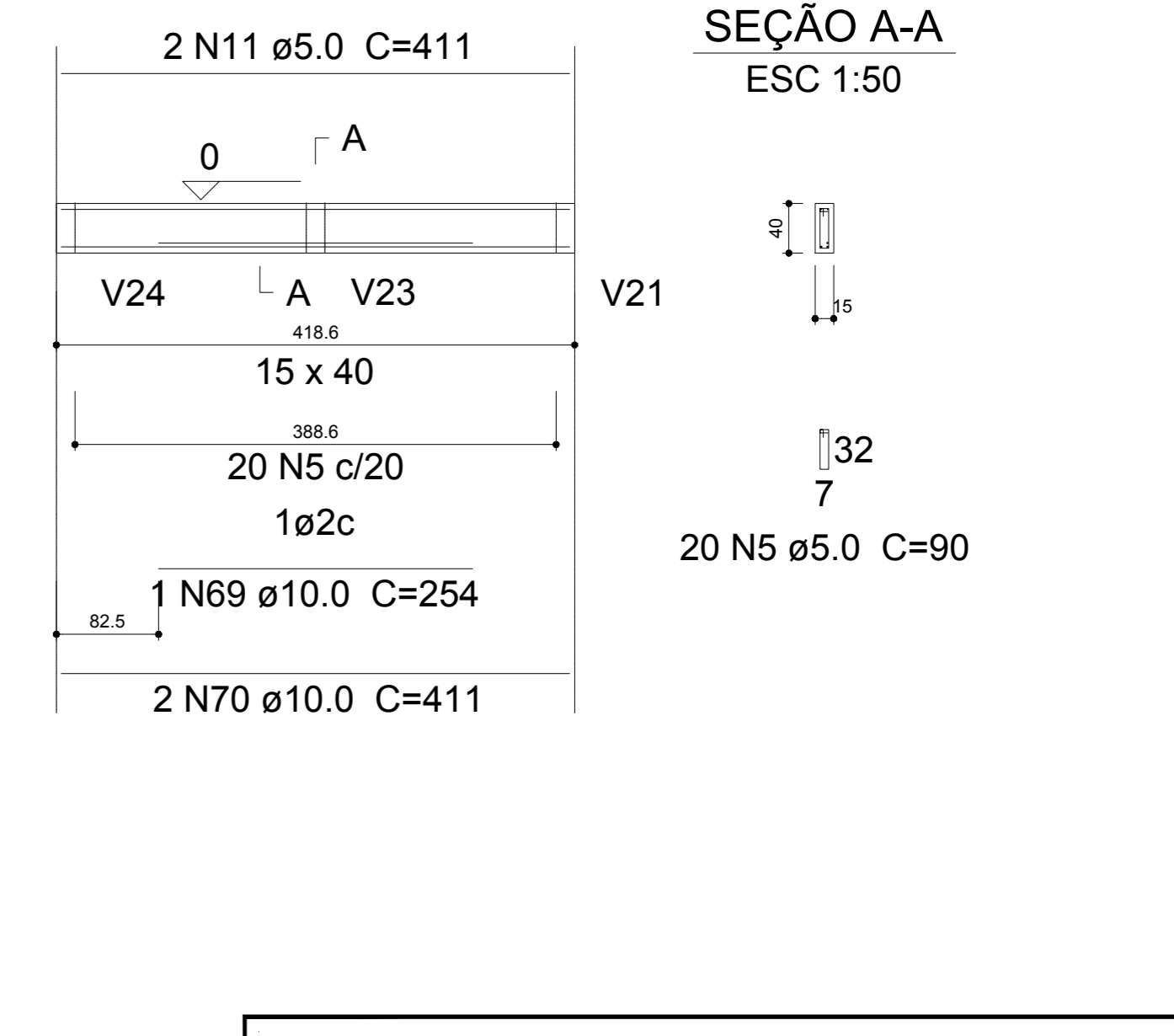
V59 ESC 1:50



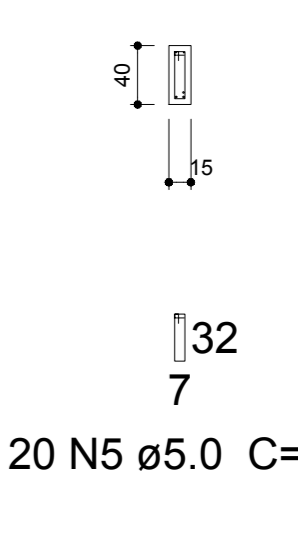
SEÇÃO A-A ESC 1:50



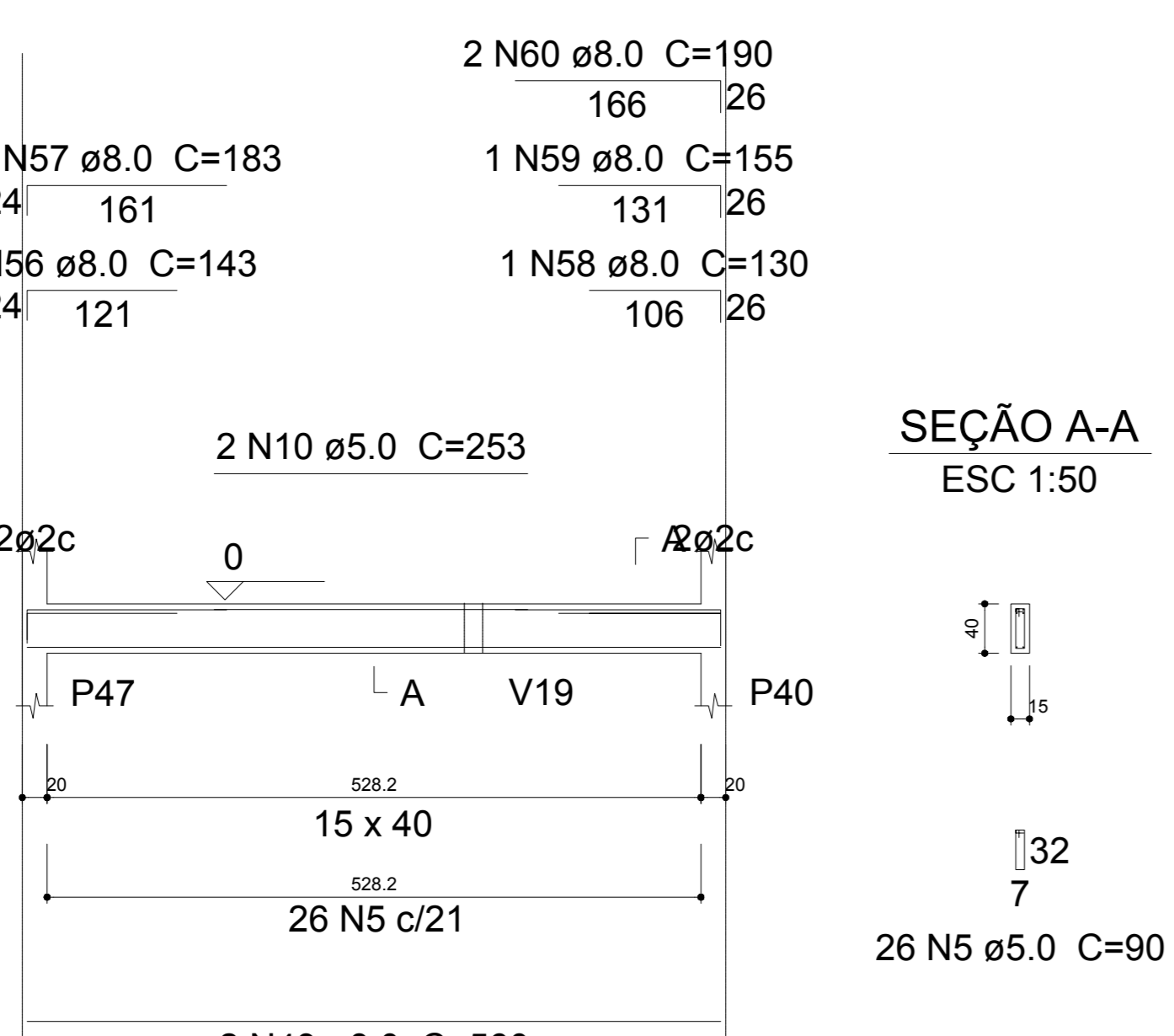
V62 ESC 1:50



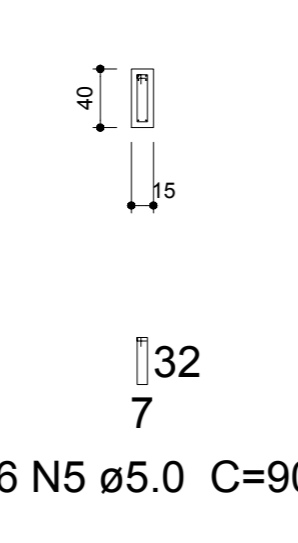
SEÇÃO A-A ESC 1:50



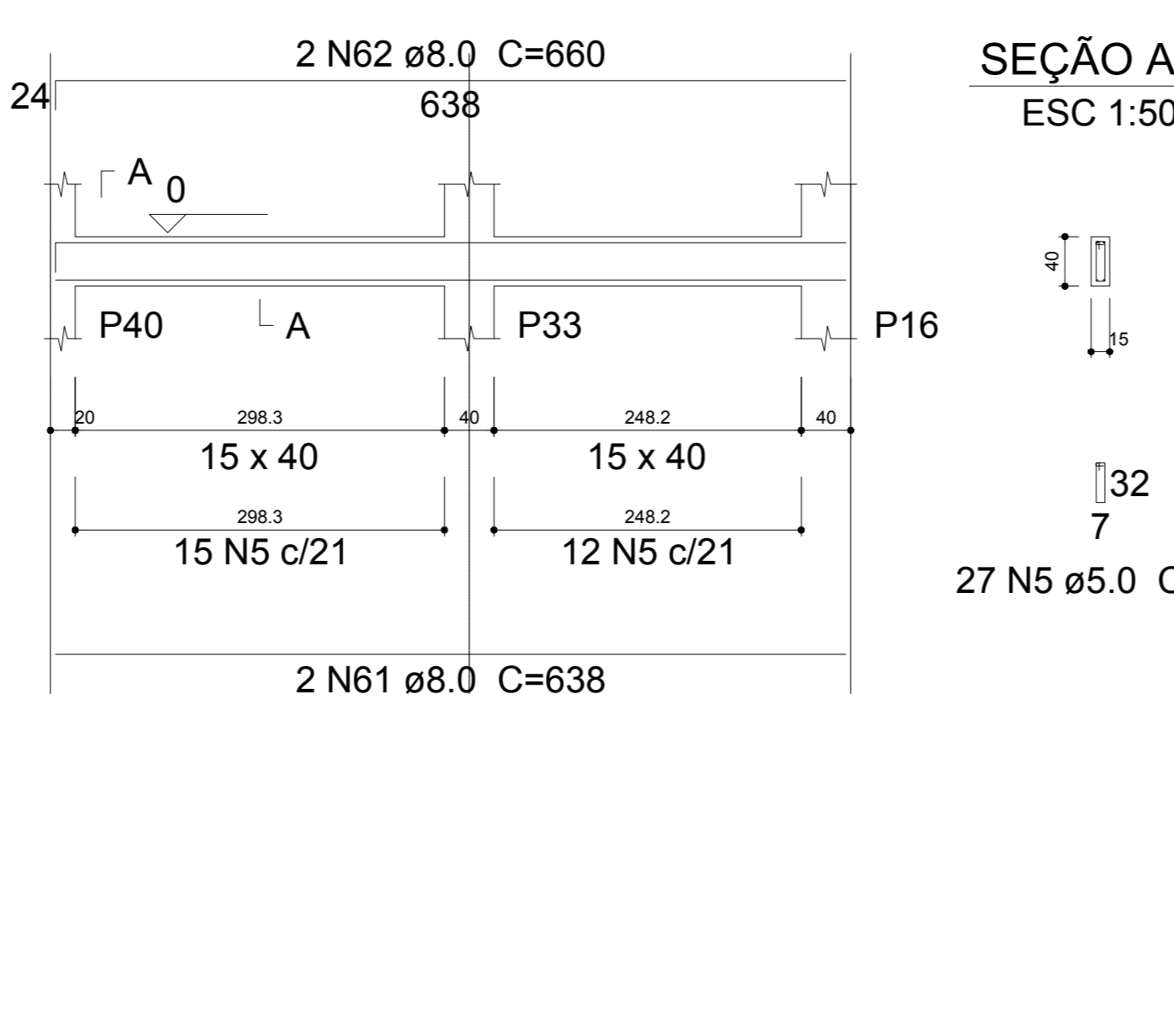
V60 ESC 1:50



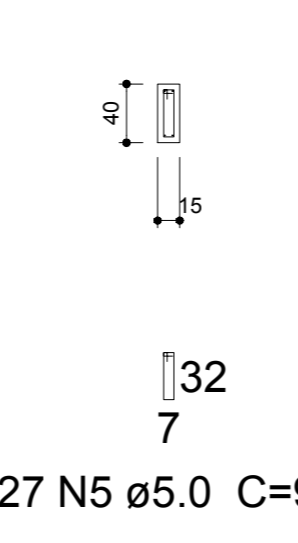
SEÇÃO A-A ESC 1:50



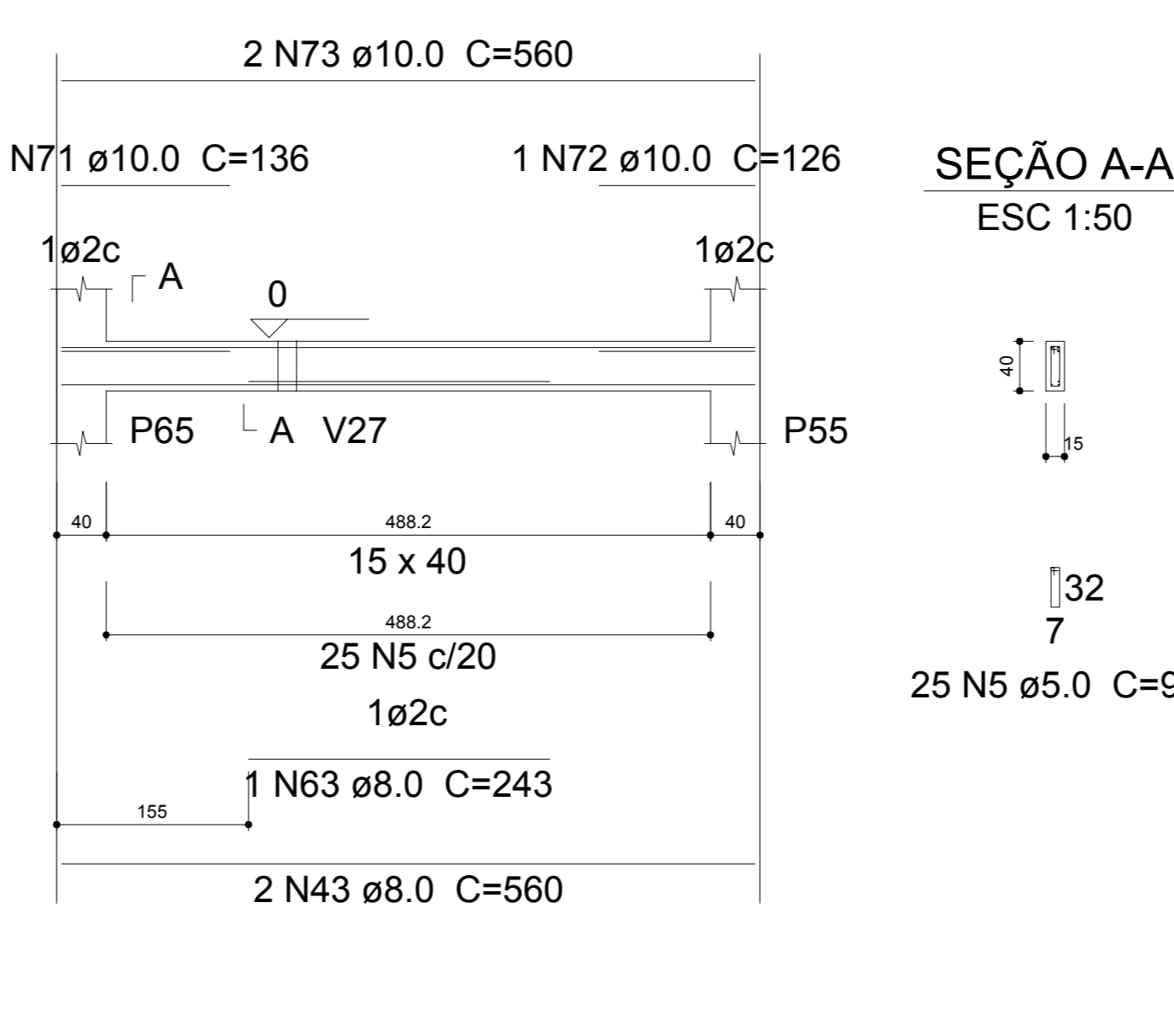
V61 ESC 1:50



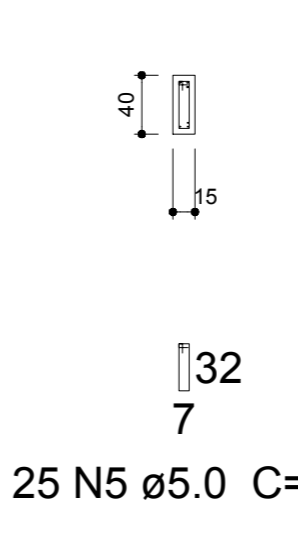
SEÇÃO A-A ESC 1:50



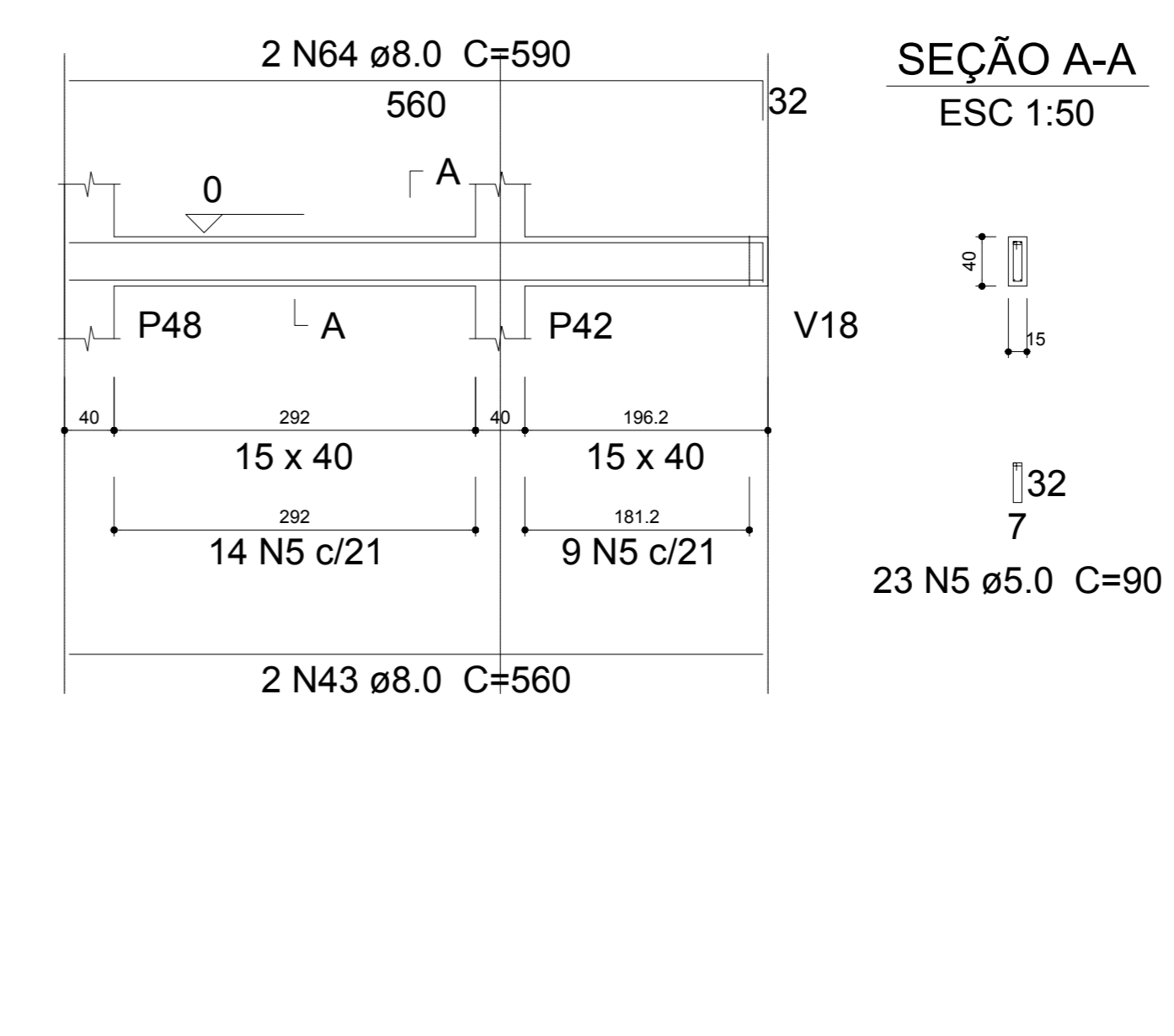
V63 ESC 1:50



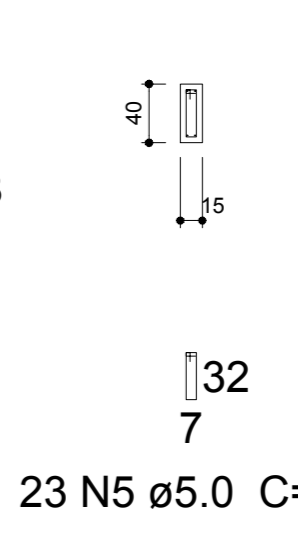
SEÇÃO A-A ESC 1:50



V64 ESC 1:50



SEÇÃO A-A ESC 1:50



Engeobra
ENGENHARIA E INFRAESTRUTURA

Rua Primo Tacca, 350, Bairro Tacca - Jarnerê, SC
E-mail: engenharia@engeobra.com.br | Tel: (49) 9 9976-0228

OBRA: **GINÁSIO SANTA TEREZINHA**

LOCAL: **Rua Achilles Biassotto, s/n, Bairro Guarany - Xaxim - SC**

PROJETO: **PROJETO ESTRUTURAL**

ESPECIFICAÇÕES: - Vigas baldrame	DATA: 07/2021	DESENHO: T.L
	ÁREA: 3.544,73 m²	PRANCHA: 08 / 27
	ESCALA: Indicada	

Projeto: _____ Proprietário: _____

SAMUEL SPSSATTO OUTEIRO
Eng. Civil - CREA SC 133319-7

PREFEITURA MUNICIPAL DE XAXIM
CNPJ: 82.854.670/0001-30