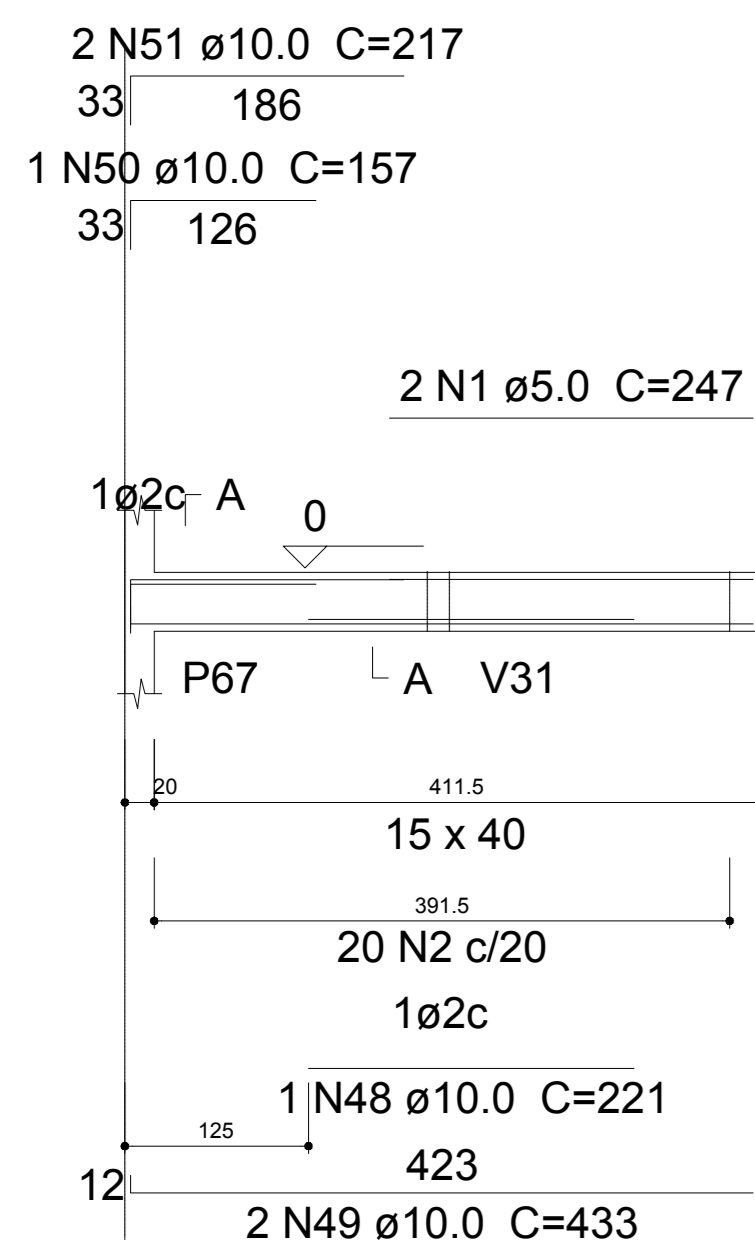
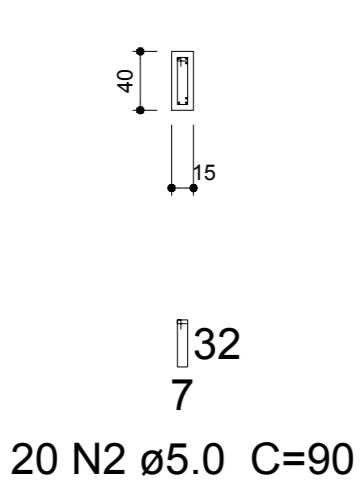


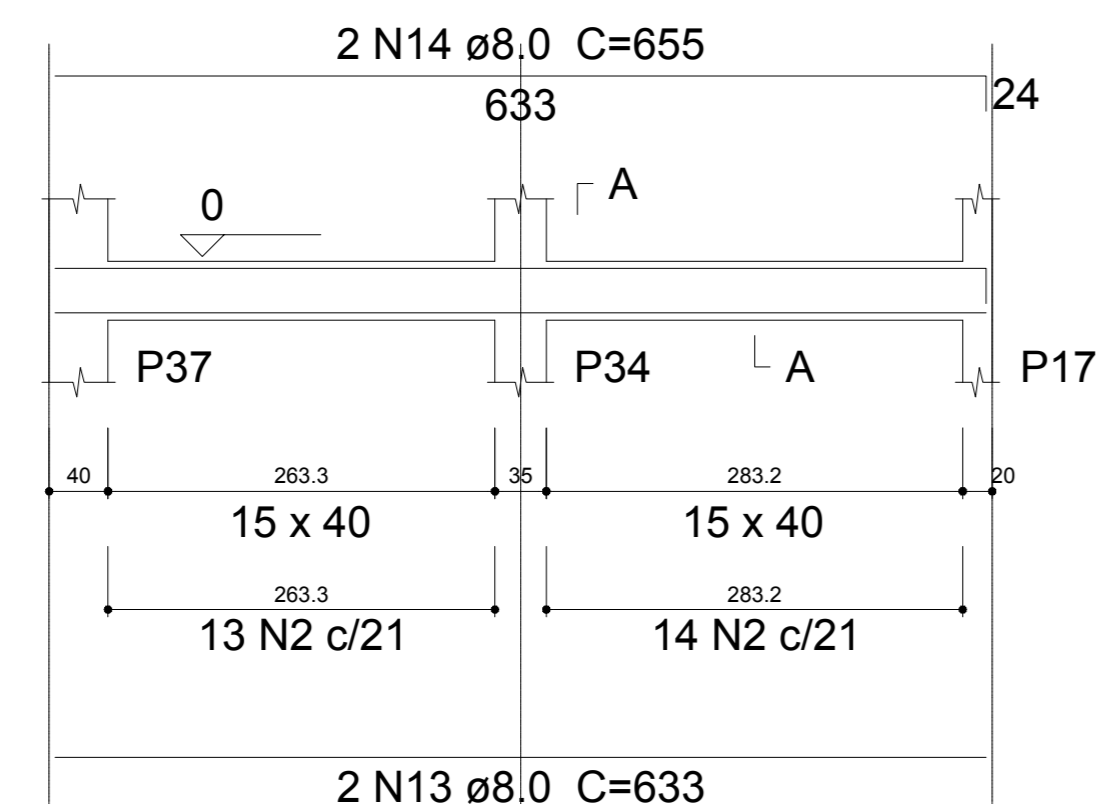
V65
ESC 1:50



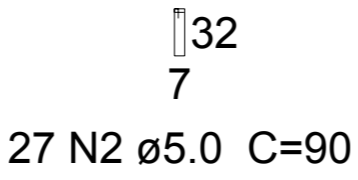
SEÇÃO A-A
ESC 1:50



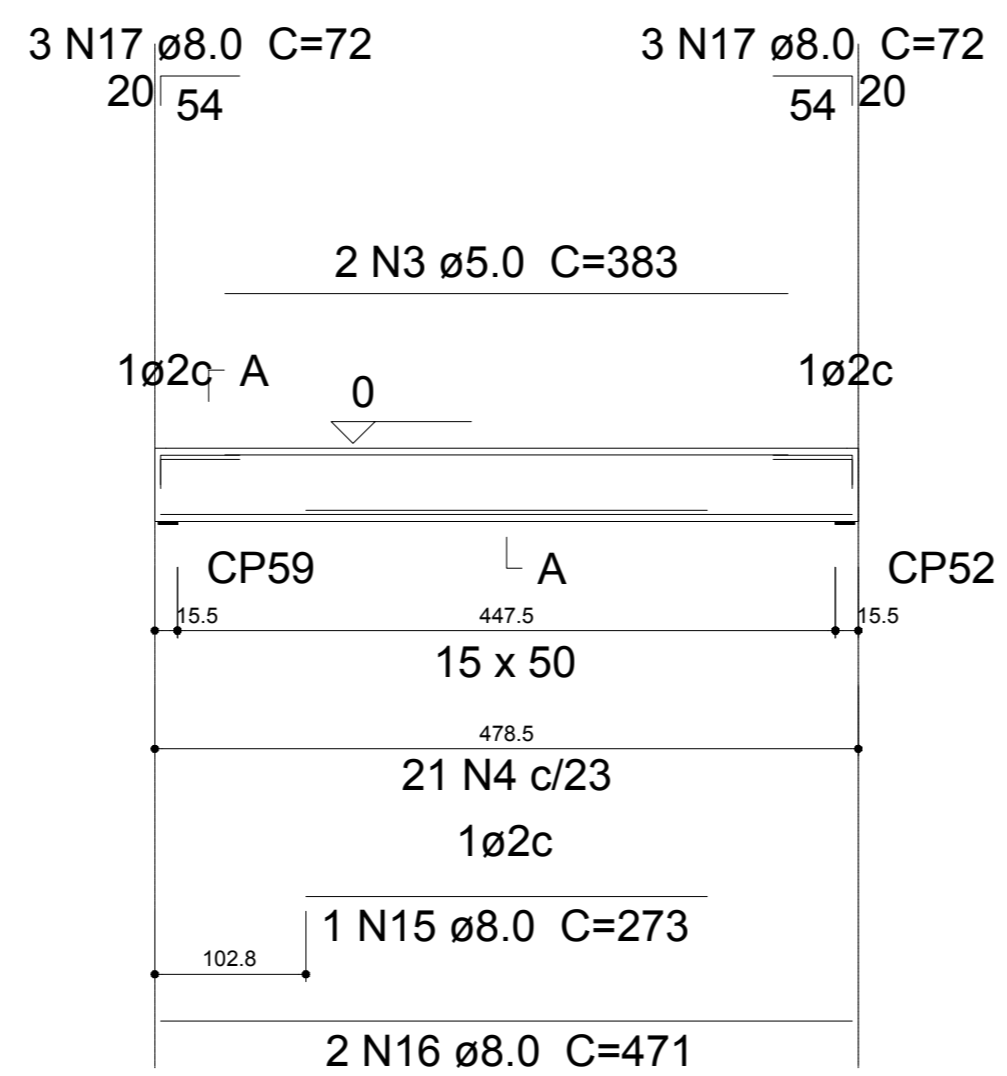
V66
ESC 1:50



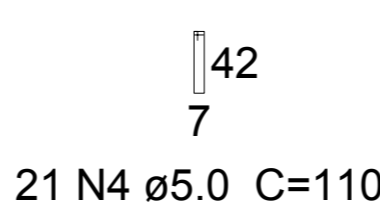
SEÇÃO A-A
ESC 1:50



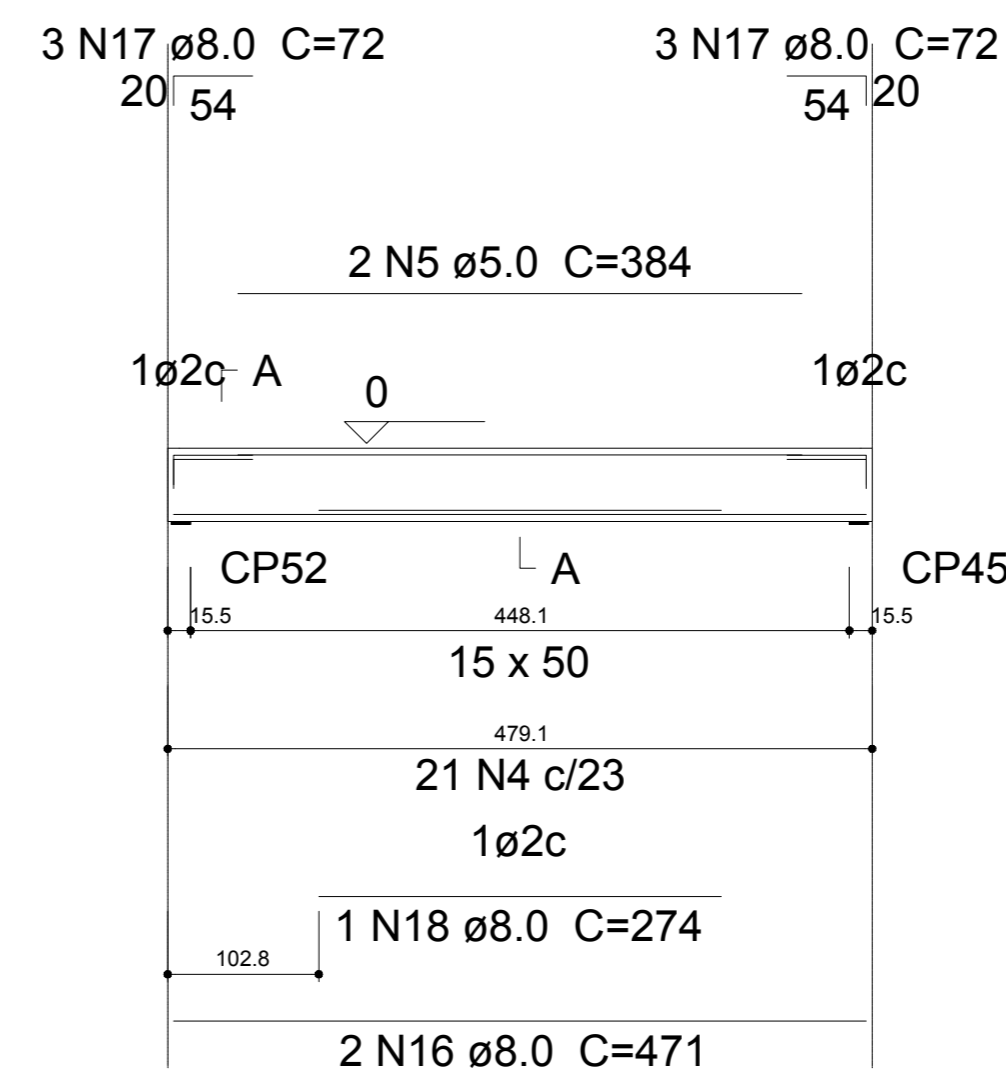
V67
ESC 1:50



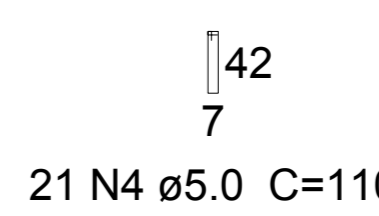
SEÇÃO A-A
ESC 1:50



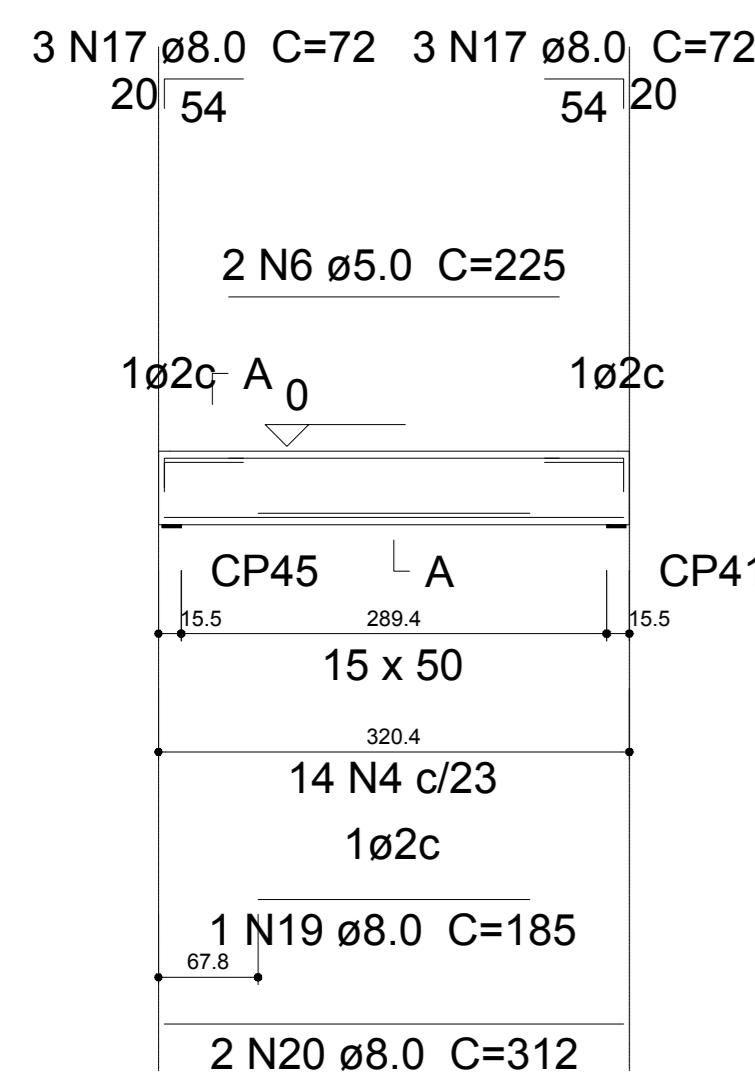
V68
ESC 1:50



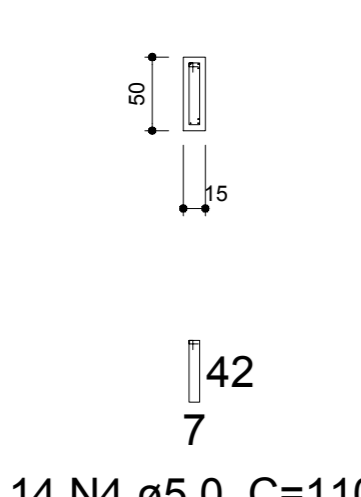
SEÇÃO A-A
ESC 1:50



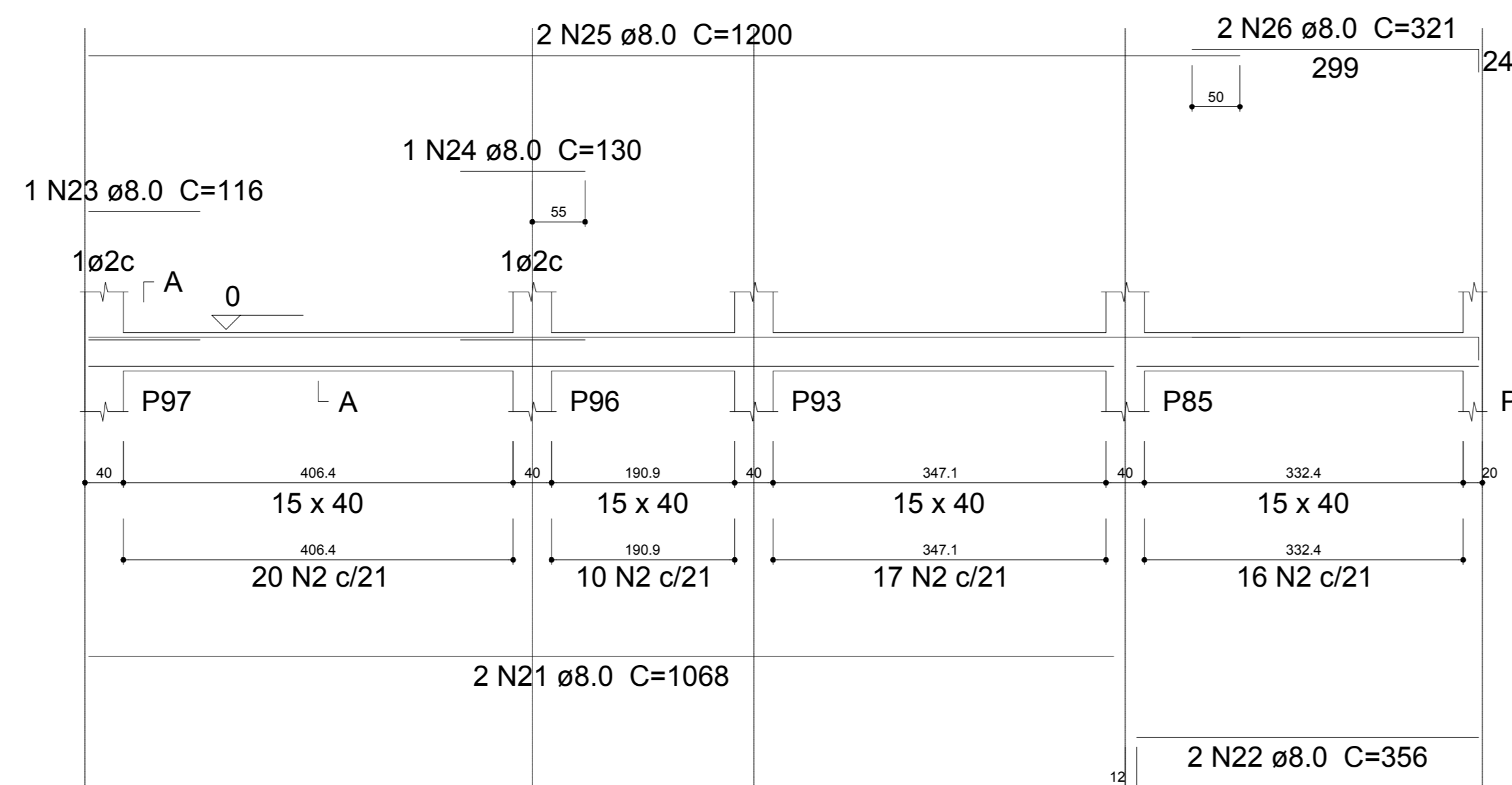
V69
ESC 1:50



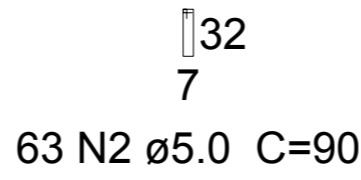
SEÇÃO A-A
ESC 1:50



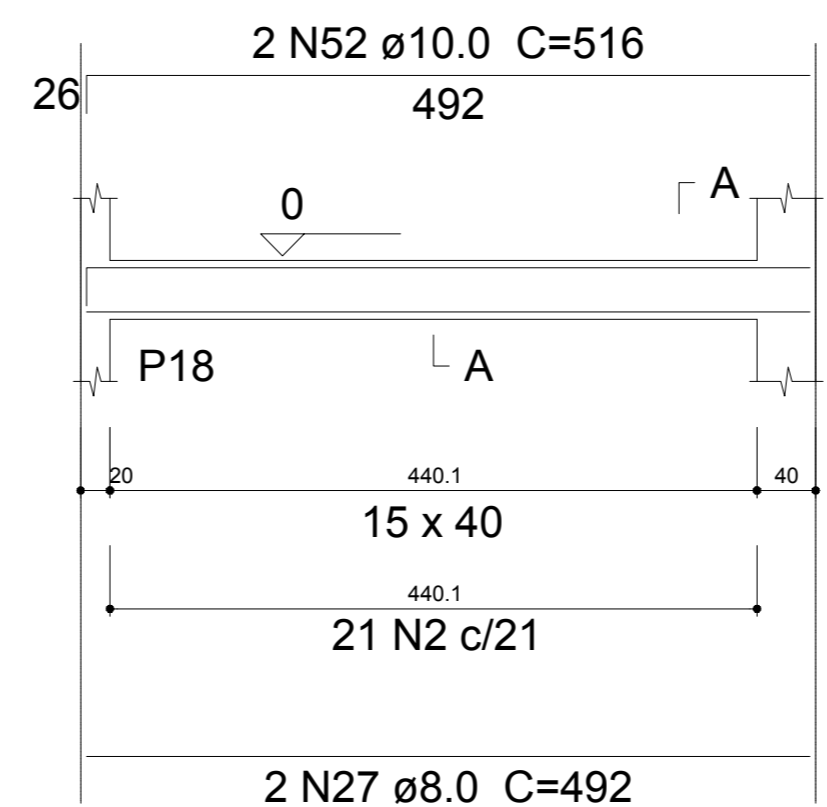
V70
ESC 1:50



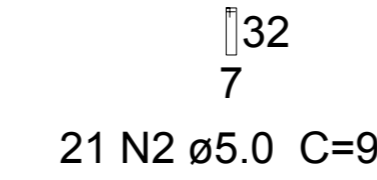
SEÇÃO A-A
ESC 1:50



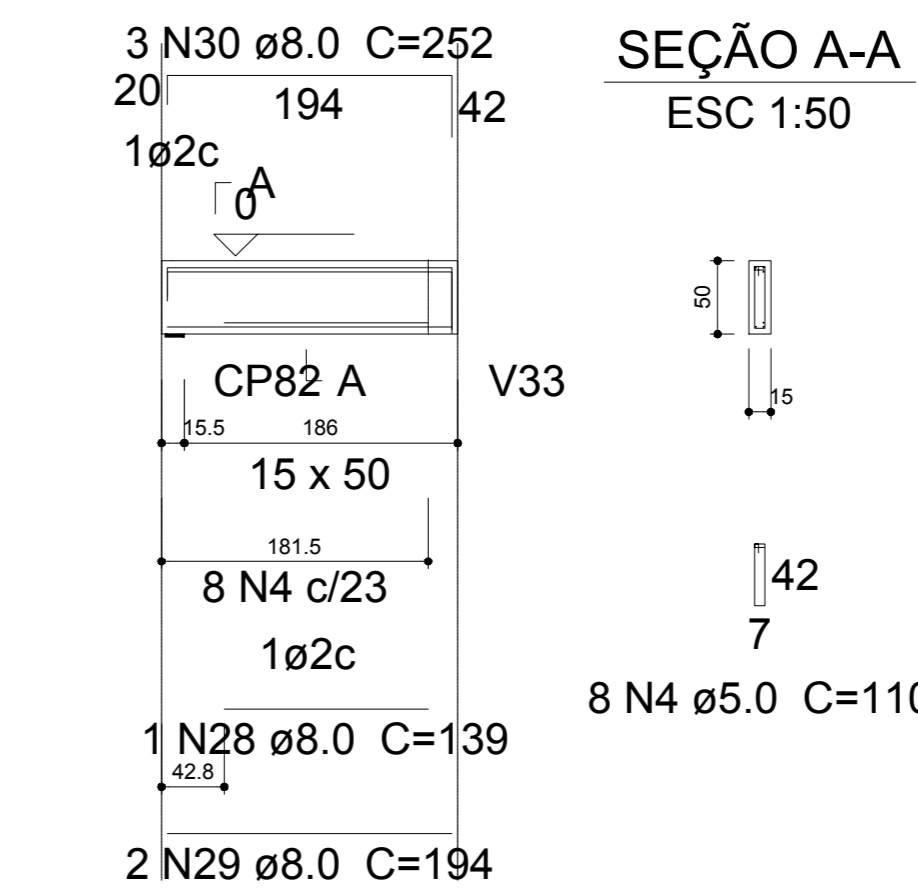
V71
ESC 1:50



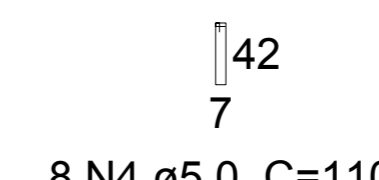
SEÇÃO A-A
ESC 1:50



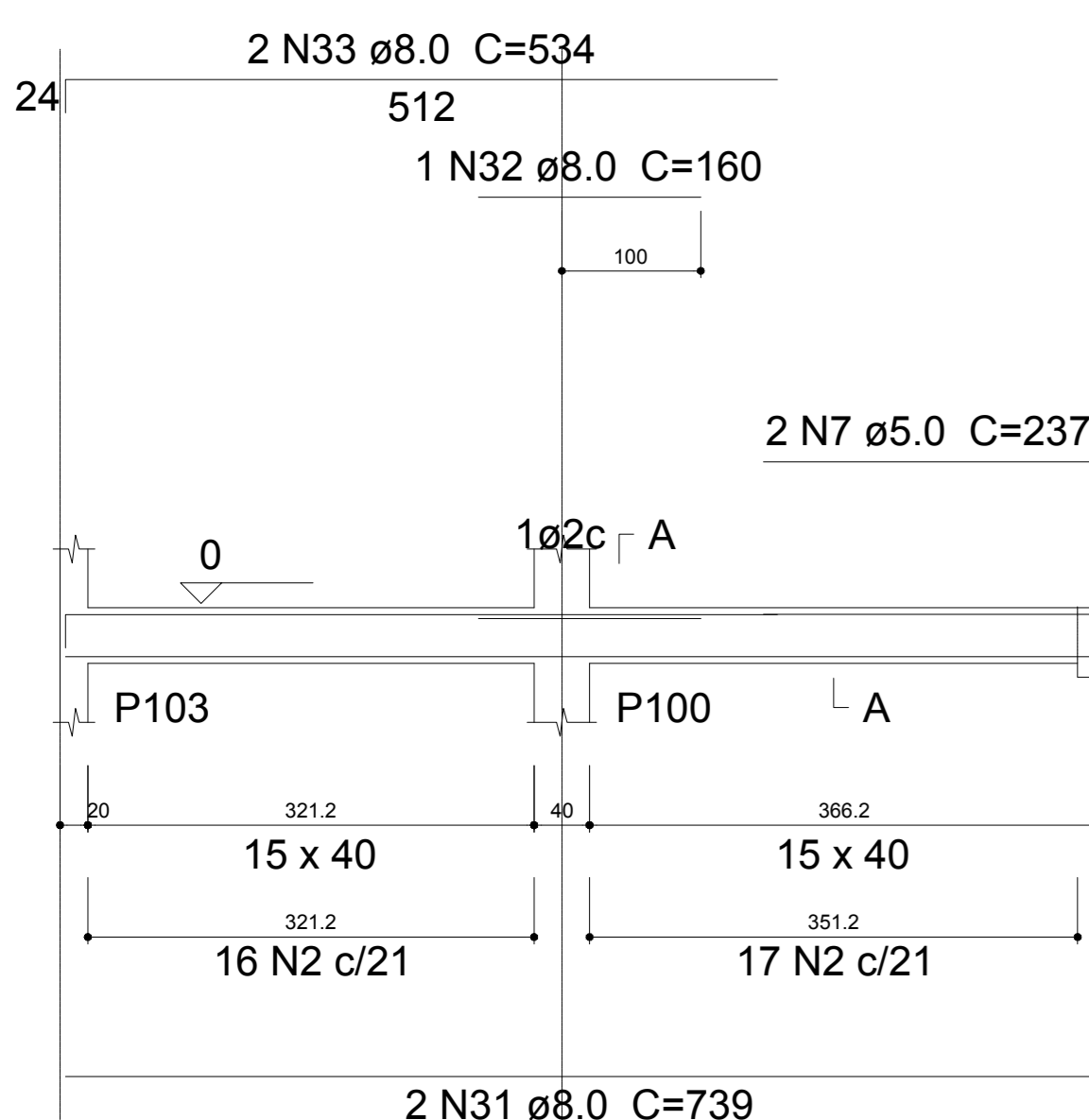
V80
ESC 1:50



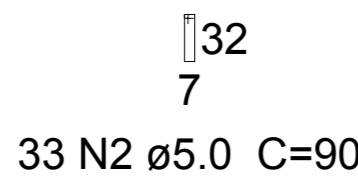
SEÇÃO A-A
ESC 1:50



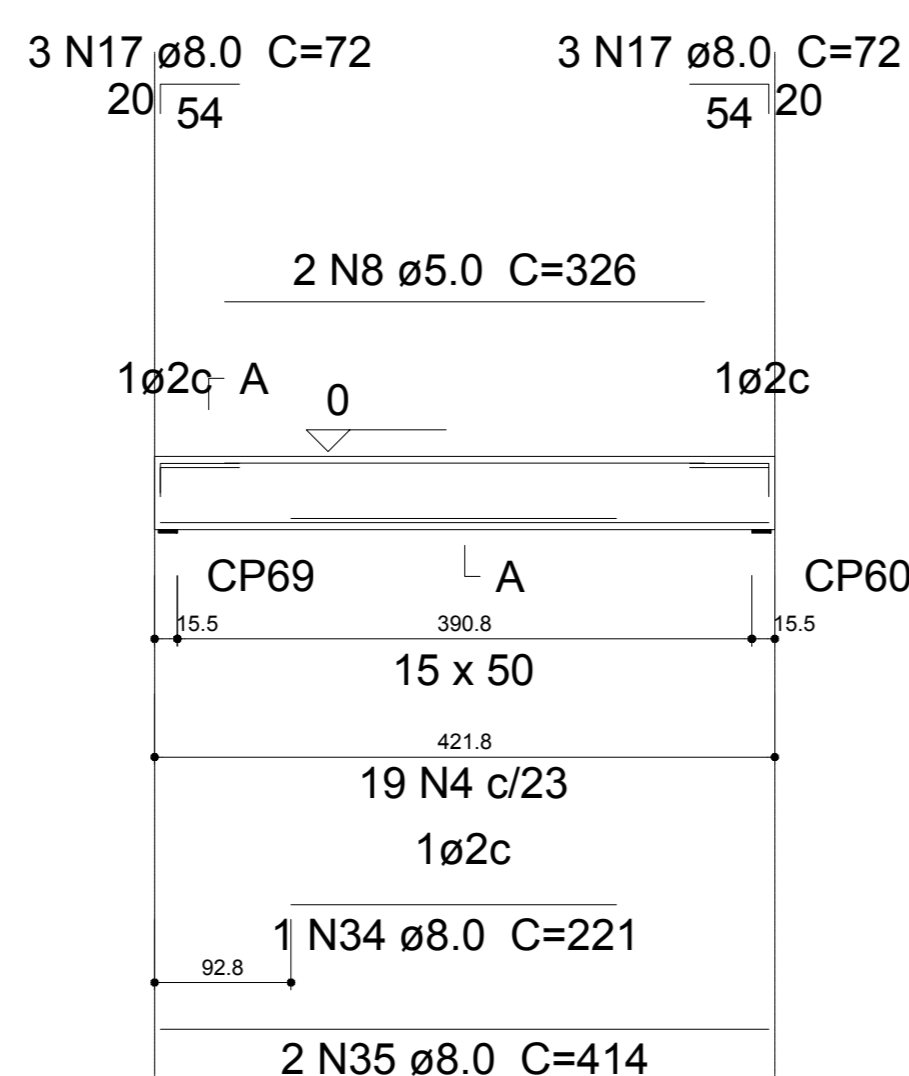
V72
ESC 1:50



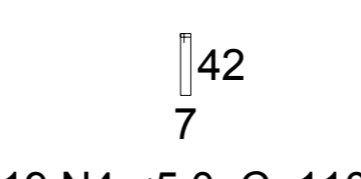
SEÇÃO A-A
ESC 1:50



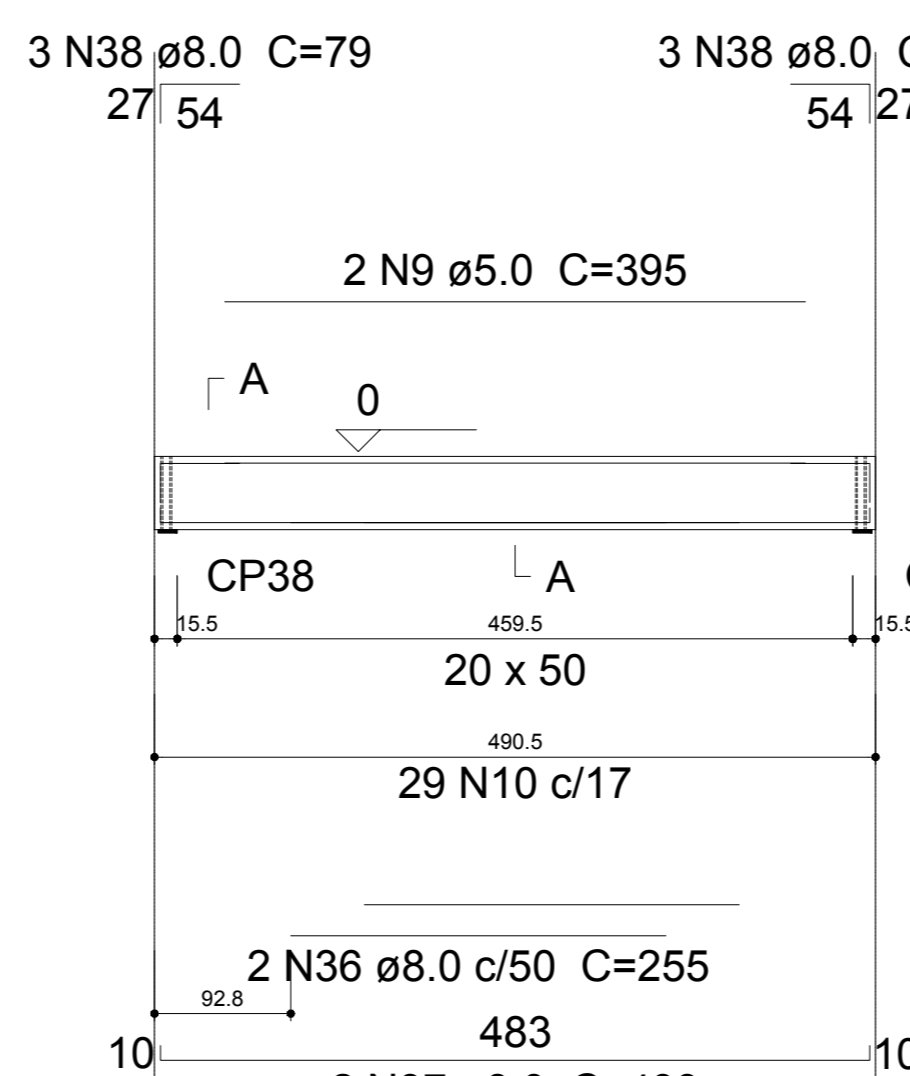
V73
ESC 1:50



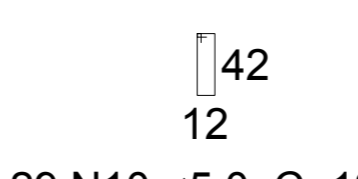
SEÇÃO A-A
ESC 1:50



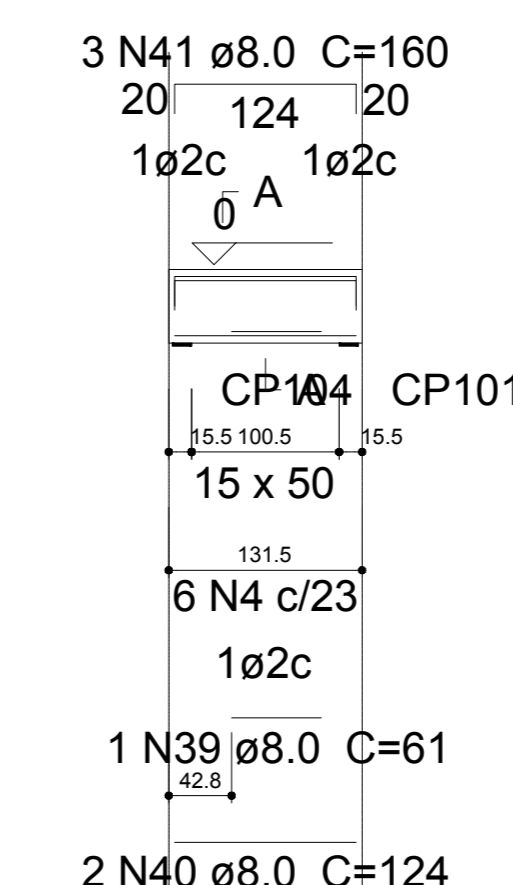
V74
ESC 1:50



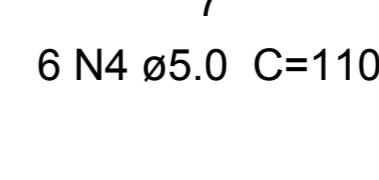
SEÇÃO A-A
ESC 1:50



V76
ESC 1:50



SEÇÃO A-A
ESC 1:50



Relação do aço

ÁÇO	N	DIAM (mm)	QUANT (Barras)	UNIT (cm)	C.TOTAL (cm)
CA60	1	5.0	2	247	494
CA60	2	5.0	164	90	14760
CA60	3	5.0	2	383	766
CA60	4	5.0	162	110	17820
CA60	5	5.0	4	384	1536
CA60	6	5.0	2	225	450
CA60	7	5.0	2	237	474
CA60	8	5.0	2	326	652
CA60	9	5.0	2	395	790
CA60	10	5.0	29	120	3480
CA60	11	5.0	2	407	814
CA60	12	5.0	2	581	1162
CA50	13	8.0	2	633	1266
CA50	14	8.0	2	655	1310
CA50	15	8.0	1	273	273
CA50	16	8.0	4	471	1884
CA50	17	8.0	42	72	3024
CA50	18	8.0	1	274	274
CA50	19	8.0	1	185	185
CA50	20	8.0	2	312	624
CA50	21	8.0	2	1068	2136
CA50	22	8.0	2	356	712
CA50	23	8.0	1	116	116
CA50	24	8.0	1	130	130
CA50	25	8.0	2	1200	2400
CA50	26	8.0	2	321	642
CA50	27	8.0	2	492	984
CA50	28	8.0	1	139	139
CA50	29	8.0	2	194	388
CA50	30	8.0	3	252	756
CA50	31	8.0	2	739	1478
CA50	32	8.0	1	160	160
CA50	33	8.0	2	534	1068
CA50	34	8.0	1	221	221
CA50	35	8.0	2	414	828
CA50	36	8.0	2	255	510
CA50	37	8.0	2	499	998
CA50	38	8.0	6	79	474
CA50	39	8.0	1	61	61
CA50	40	8.0	2	124	248
CA50	41	8.0	3	160	480
CA50	42	8.0	1	287	287
CA50	43	8.0	2	494	988
CA50	44	8.0	1	299	299
CA50	45	8.0	2	472	944
CA50	46	8.0	1	391	391
CA50	47	8.0	2	669	1338
CA50	48	10.0	1	221	221
CA50	49	10.0	2	433	866
CA50	50	10.0	1	157	157
CA50	51	10.0	2	217	434
CA50	52	10.0	2	516	1032

Resumo do aço

ÁÇO	DIAM (mm)	C.TOTAL (m)	PESO + 10 % (kg)
CA50	8.0	280.2	121.6
CA50	10.0	27.1	18.4
CA60	5.0	432	73.2
PESO TOTAL (kg)			
CA50	140		
CA60	73.2		

Volume de concreto (C-35) = 5.52 m³
Área de forma = 84.21 m²



Rua Primo Tacca, 350, Bairro Tacca - Jaraguá - SC
E-mail: engenharia@engeobra.com.br | Tel: (49) 9 9976-0228

OBRA: GINÁSIO SANTA TEREZINHA							
LOCAL: Rua Achilles Biassotto, s/n, Bairro Guarany - Xaxim - SC							
PROJETO: PROJETO ESTRUTURAL							
ESPECIFICAÇÕES: - Vigas baldrame	<table border="1" style="width: 100%;"> <tr> <td>DATA: 07/2021</td> <td>DESENHO: T.L</td> </tr> <tr> <td>ÁREA: 3.544,73 m²</td> <td>PRANCHA: 09 /27</td> </tr> <tr> <td>ESCALA: Indicada</td> <td></td> </tr> </table>	DATA: 07/2021	DESENHO: T.L	ÁREA: 3.544,73 m²	PRANCHA: 09 /27	ESCALA: Indicada	
DATA: 07/2021	DESENHO: T.L						
ÁREA: 3.544,73 m²	PRANCHA: 09 /27						
ESCALA: Indicada							
Projeto: SAMUEL SPESATTO OUTEIRO Engº Civil - CREA SC 133319-7	Proprietário: PREFEITURA MUNICIPAL DE XAXIM CNPJ 82.854.670/0001-30						