

Relação do aço

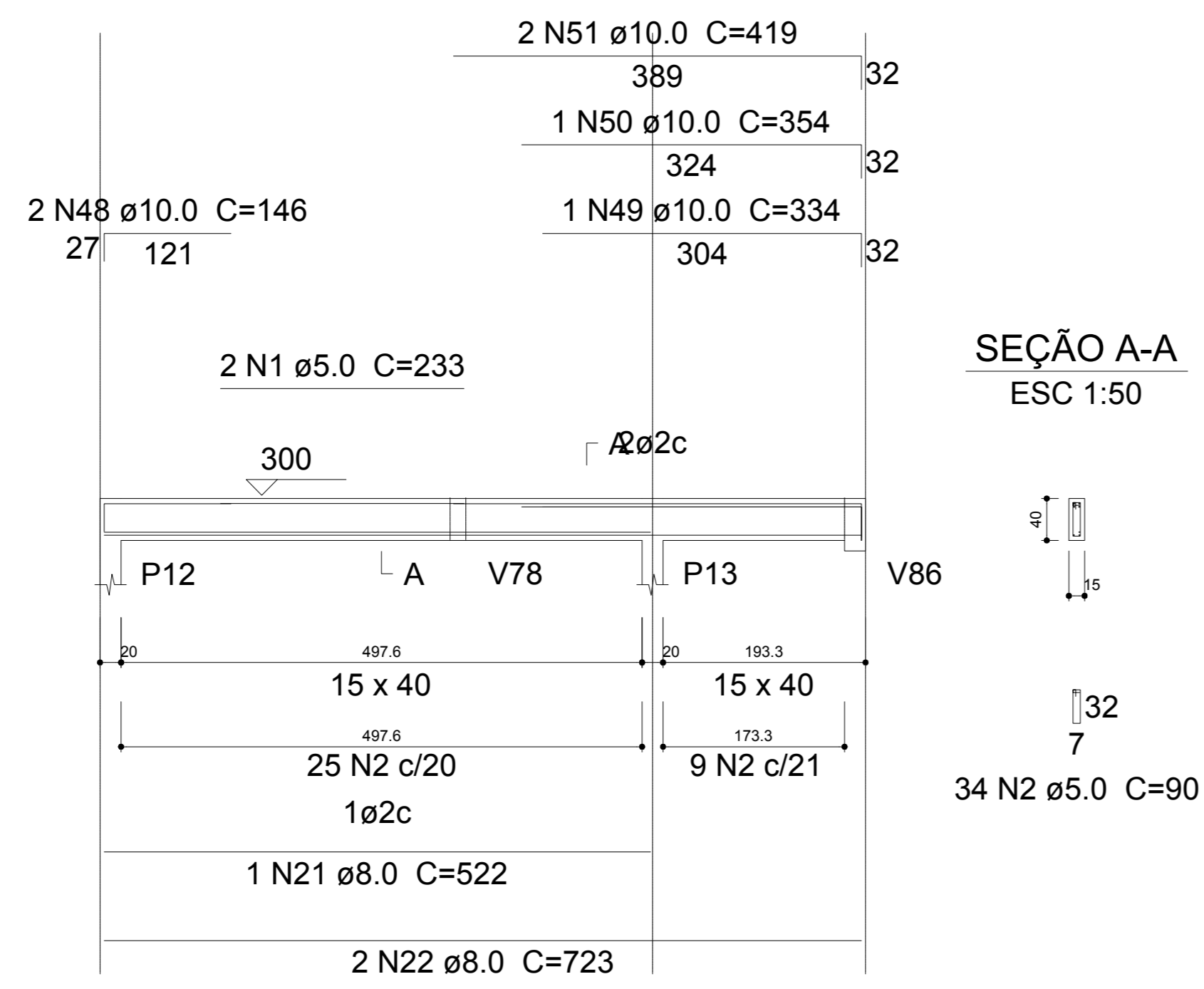
ACO	N	DIAM (mm)	QUANT (Barras)	UNIT (cm)	C.TOTAL (cm)
CA60	1	5.0	2	233	466
	2	5.0	202	90	1810
	3	5.0	194	160	31040
	4	5.0	2	318	636
	5	5.0	25	120	3000
	6	5.0	4	80	320
	7	5.0	2	295	590
	8	5.0	2	293	586
	9	5.0	54	110	5940
	10	5.0	2	259	518
	11	5.0	2	236	472
	12	5.0	2	427	854
	13	5.0	2	251	502
CA50	14	6.3	12	CORR	6060
	15	6.3	12	CORR	6060
	16	6.3	12	CORR	2988
	17	6.3	9	68	612
	18	6.3	2	116	232
	19	6.3	3	76	228
	20	6.3	5	66	330
	21	8.0	1	522	522
	22	8.0	2	723	1446
	23	8.0	6	79	474
	24	8.0	2	77	154
	25	8.0	2	121	242
	26	8.0	3	488	1464
	27	8.0	2	143	286
	28	8.0	2	183	366
	29	8.0	1	129	129
	30	8.0	4	397	1588
	31	8.0	9	72	648
	32	8.0	2	1041	2082
	33	8.0	2	180	360
	34	8.0	2	200	400
	35	8.0	2	270	540
	36	8.0	2	1077	2154
	37	8.0	2	403	806
	38	8.0	1	129	129
	39	8.0	2	169	338
	40	8.0	1	359	359
	41	8.0	2	1058	2116
	42	8.0	2	393	786
	43	8.0	1	126	126
	44	8.0	2	161	322
	45	8.0	1	177	177
	46	8.0	2	241	482
	47	8.0	3	269	807
	48	10.0	2	146	292
	49	10.0	1	334	334
	50	10.0	1	354	354
	51	10.0	2	419	838
	52	10.0	2	526	526
	53	10.0	1	260	260
	54	10.0	1	505	505
	55	10.0	2	1004	2008
	56	10.0	2	159	318
	57	10.0	2	223	446
	58	10.0	3	123	369
	59	10.0	3	270	810
	60	10.0	2	240	480
	61	10.0	1	395	395
	62	10.0	1	415	415
	63	10.0	2	1153	2306
	64	10.0	2	214	428
	65	10.0	1	163	163
	66	10.0	2	415	830
	67	10.0	2	215	430
	68	10.0	1	598	598
	69	10.0	2	841	1682
	70	10.0	3	660	1980
	71	12.5	1	220	220
	72	12.5	2	219	438

Resumo do aço

ACO	DIAM (mm)	C.TOTAL (m)	PESO + 10% (kg)
CA50	6.3	171.4	46.1
	8.0	193.1	83.8
	10.0	167.7	113.7
	12.5	6.6	7
CA60	5.0	631.1	107
PESO TOTAL (kg)			
CA50		250.6	
CA60		107	

Volume de concreto (C-35) = 6,14 m³
Área de forma = 78,15 m²

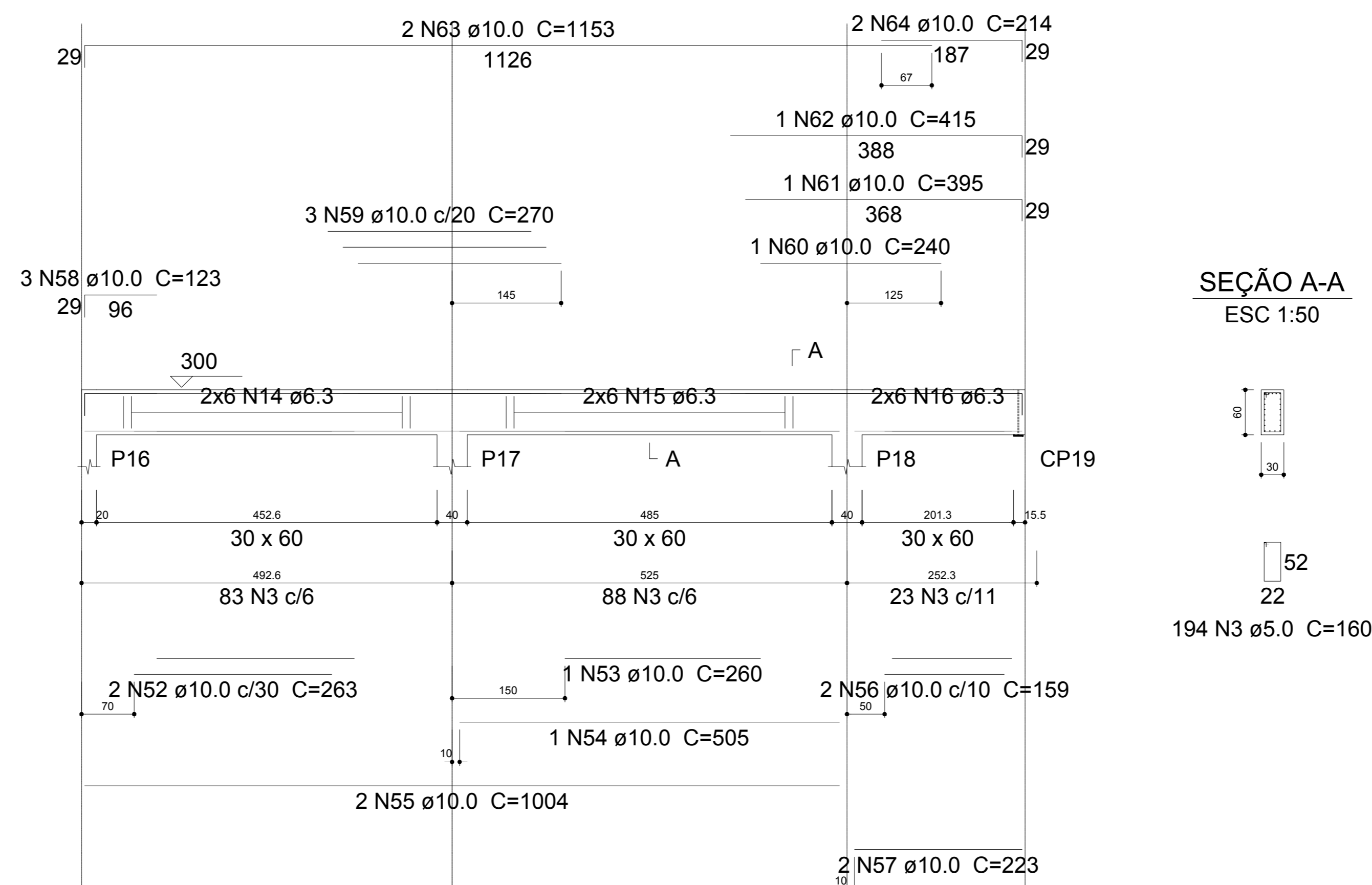
V15
ESC 1:50



SEÇÃO A-A
ESC 1:50

34 N2 ø5.0 C=90

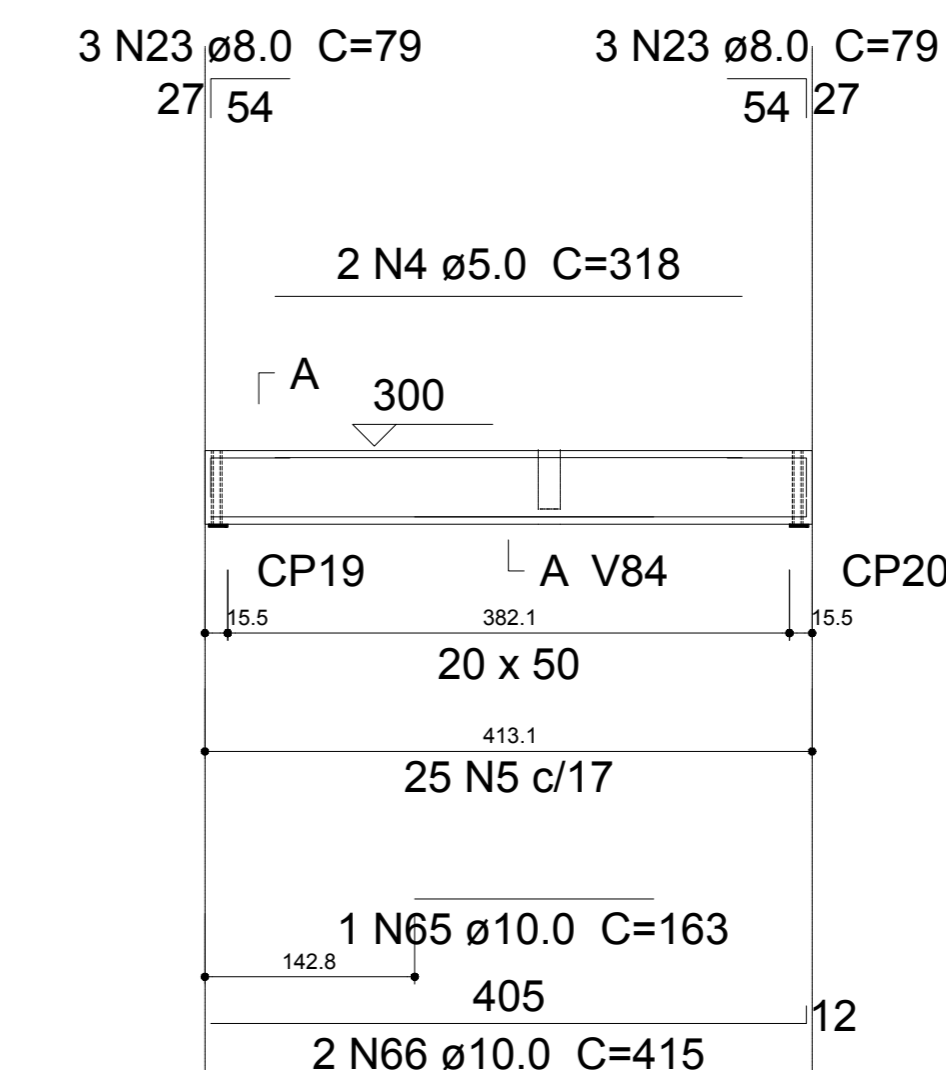
V17
ESC 1:50



SEÇÃO A-A
ESC 1:50

194 N3 ø5.0 C=160

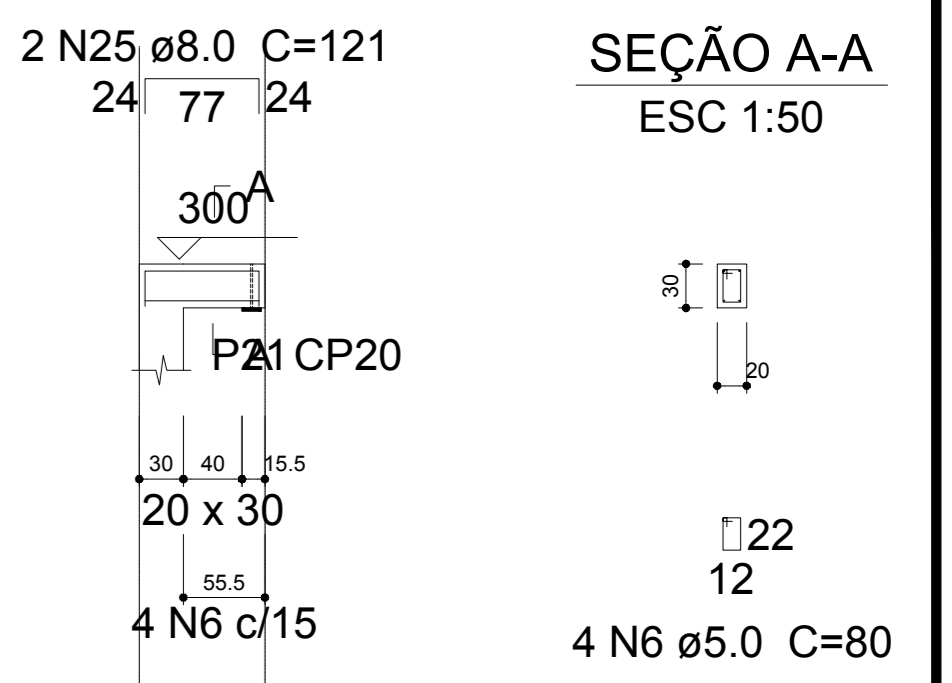
V18
ESC 1:50



SEÇÃO A-A
ESC 1:50

194 N3 ø5.0 C=160

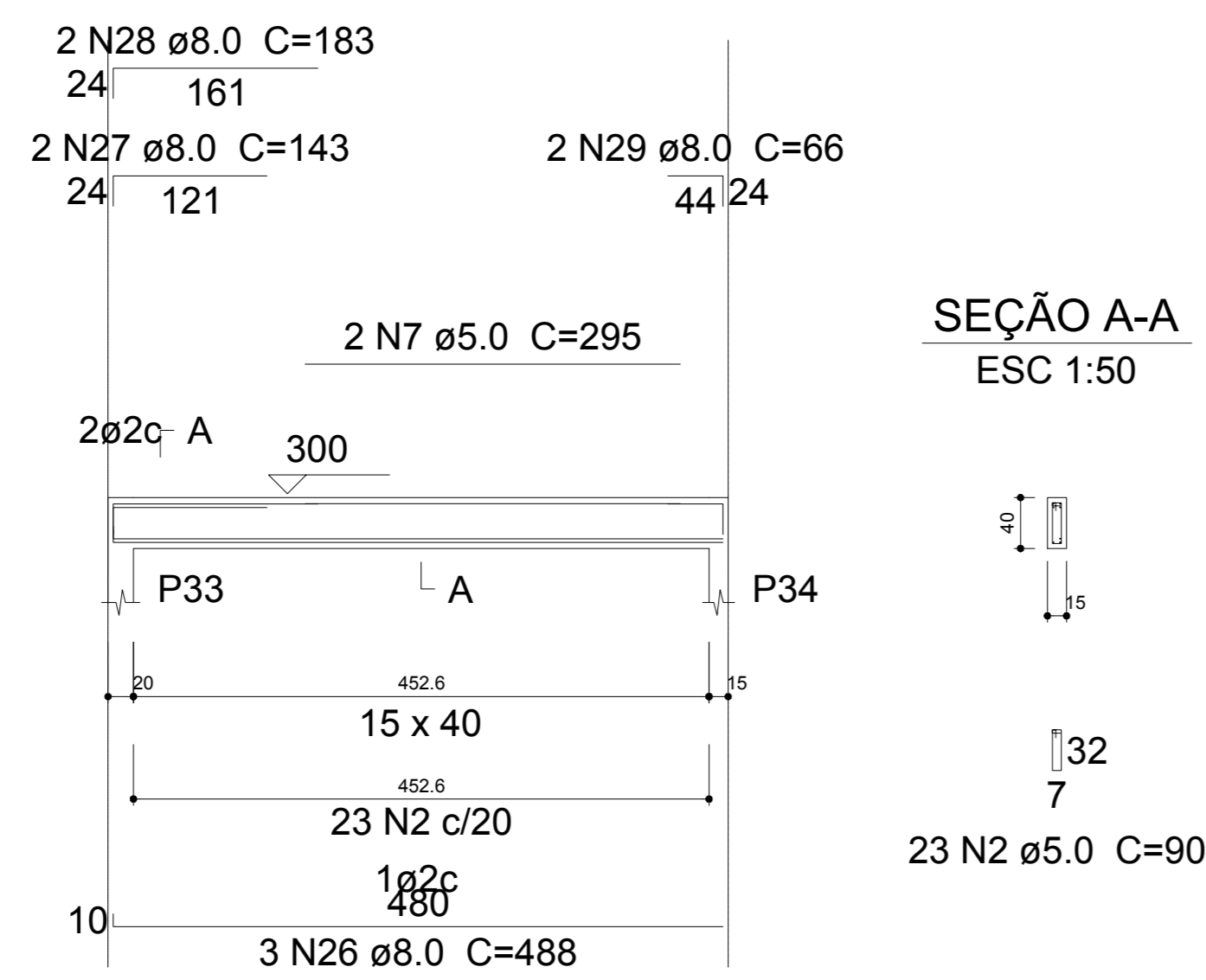
V85
ESC 1:50



SEÇÃO A-A
ESC 1:50

4 N6 ø5.0 C=80

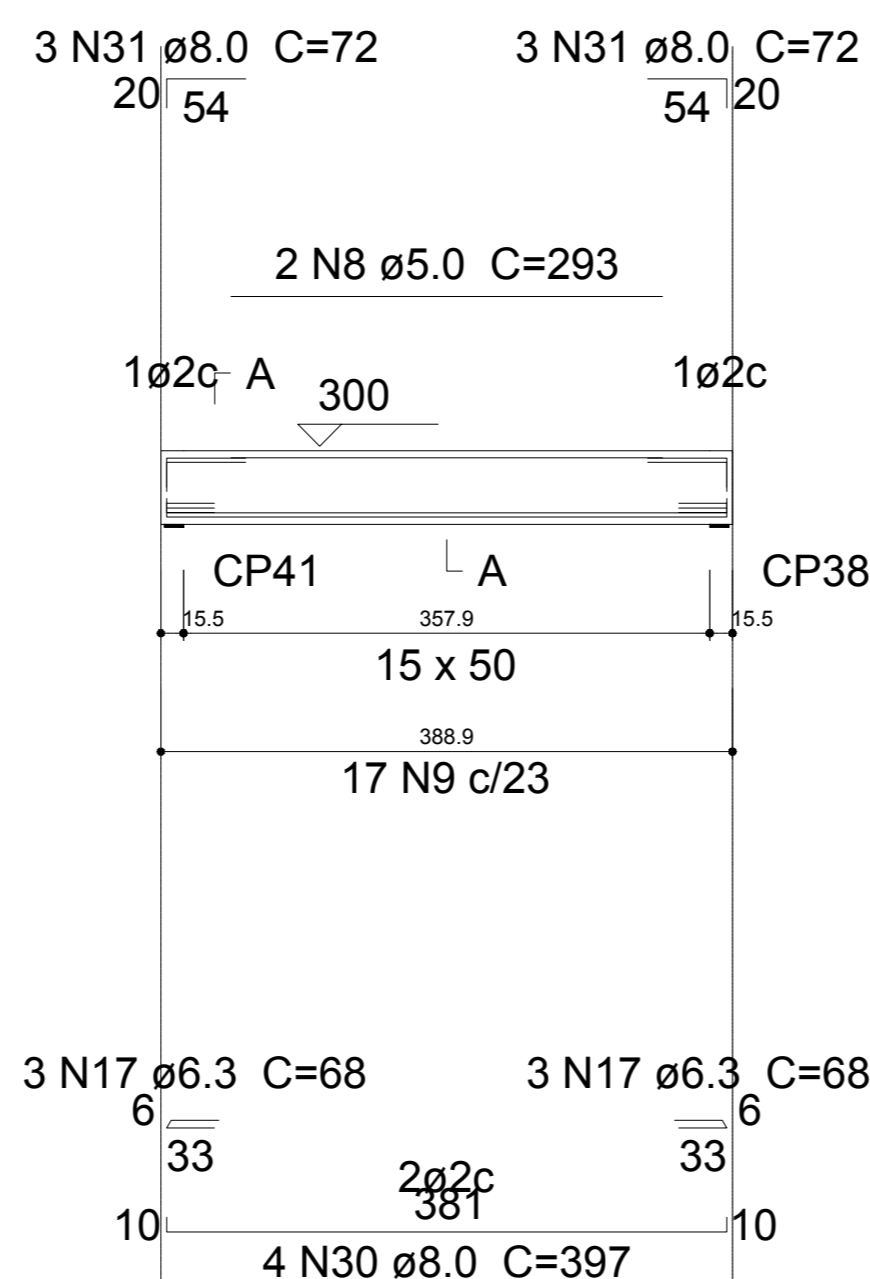
V19
ESC 1:50



SEÇÃO A-A
ESC 1:50

23 N2 ø5.0 C=90

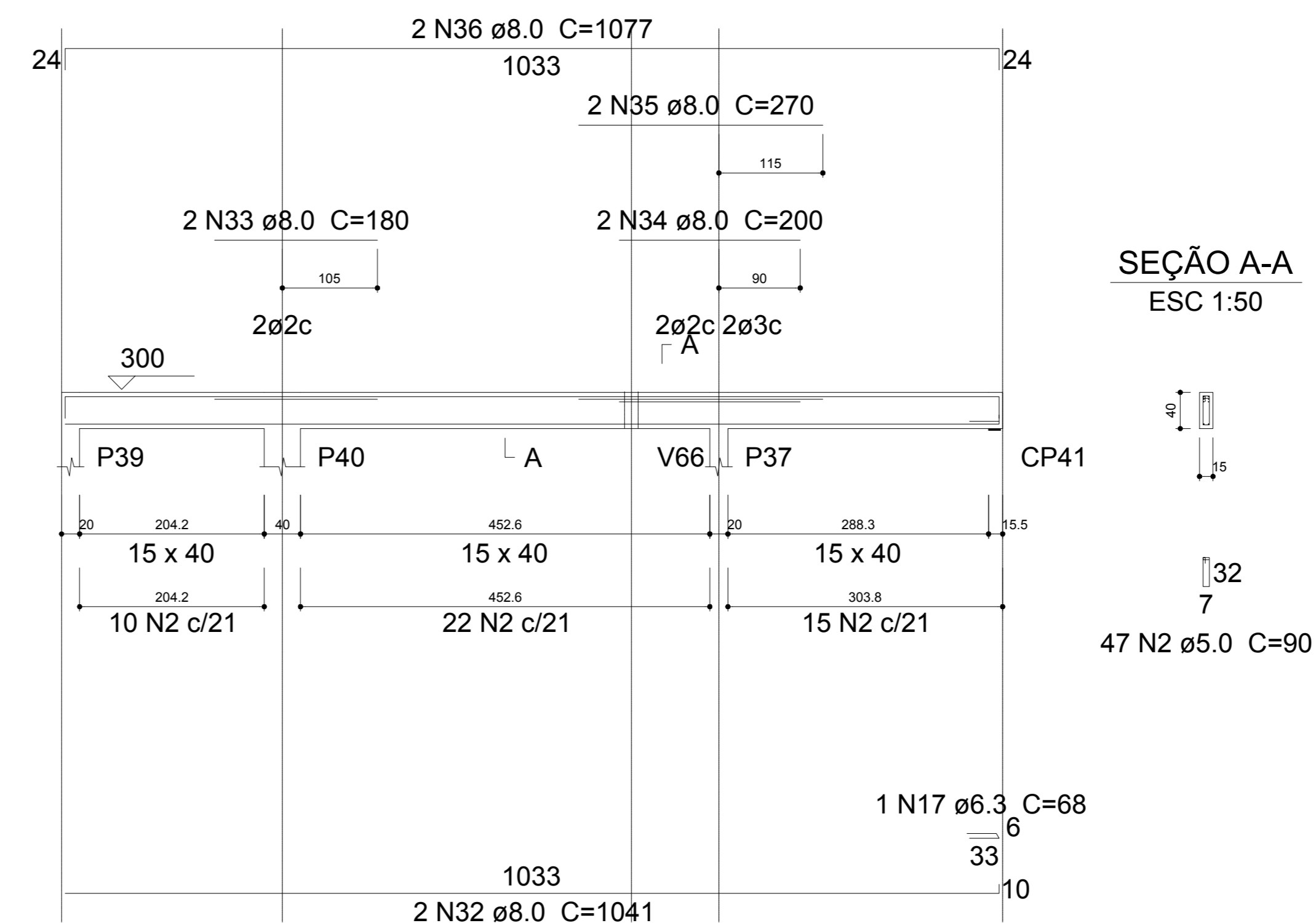
V20
ESC 1:50



SEÇÃO A-A
ESC 1:50

17 N9 ø5.0 C=110

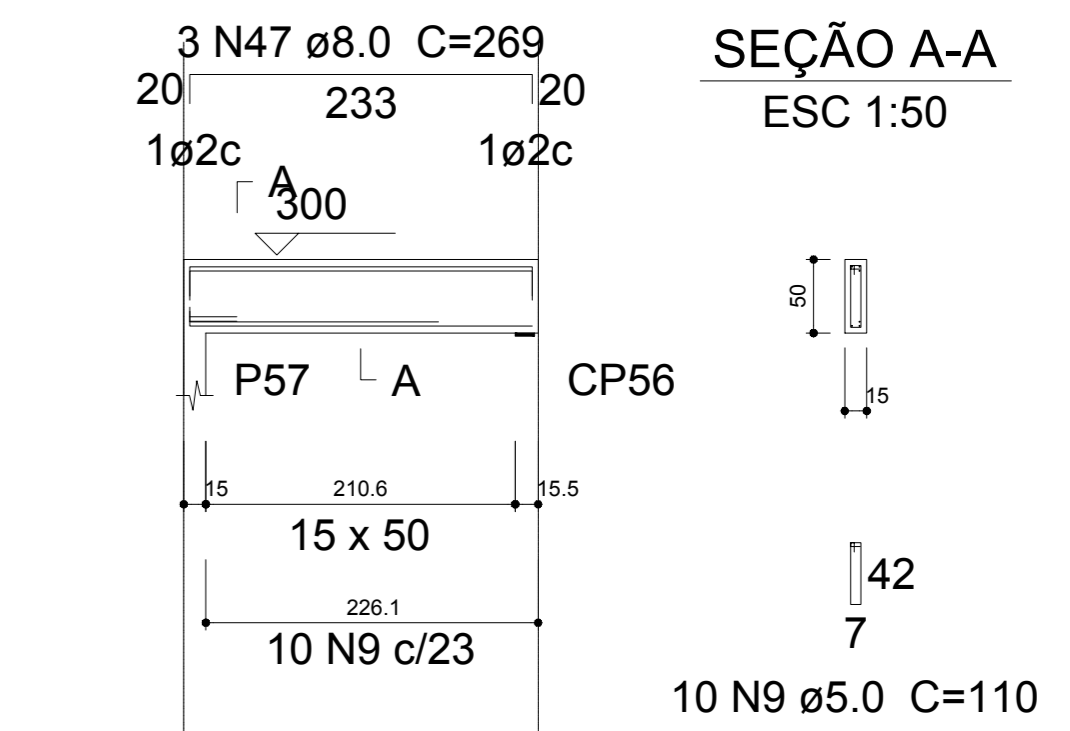
V21
ESC 1:50



SEÇÃO A-A
ESC 1:50

47 N2 ø5.0 C=90

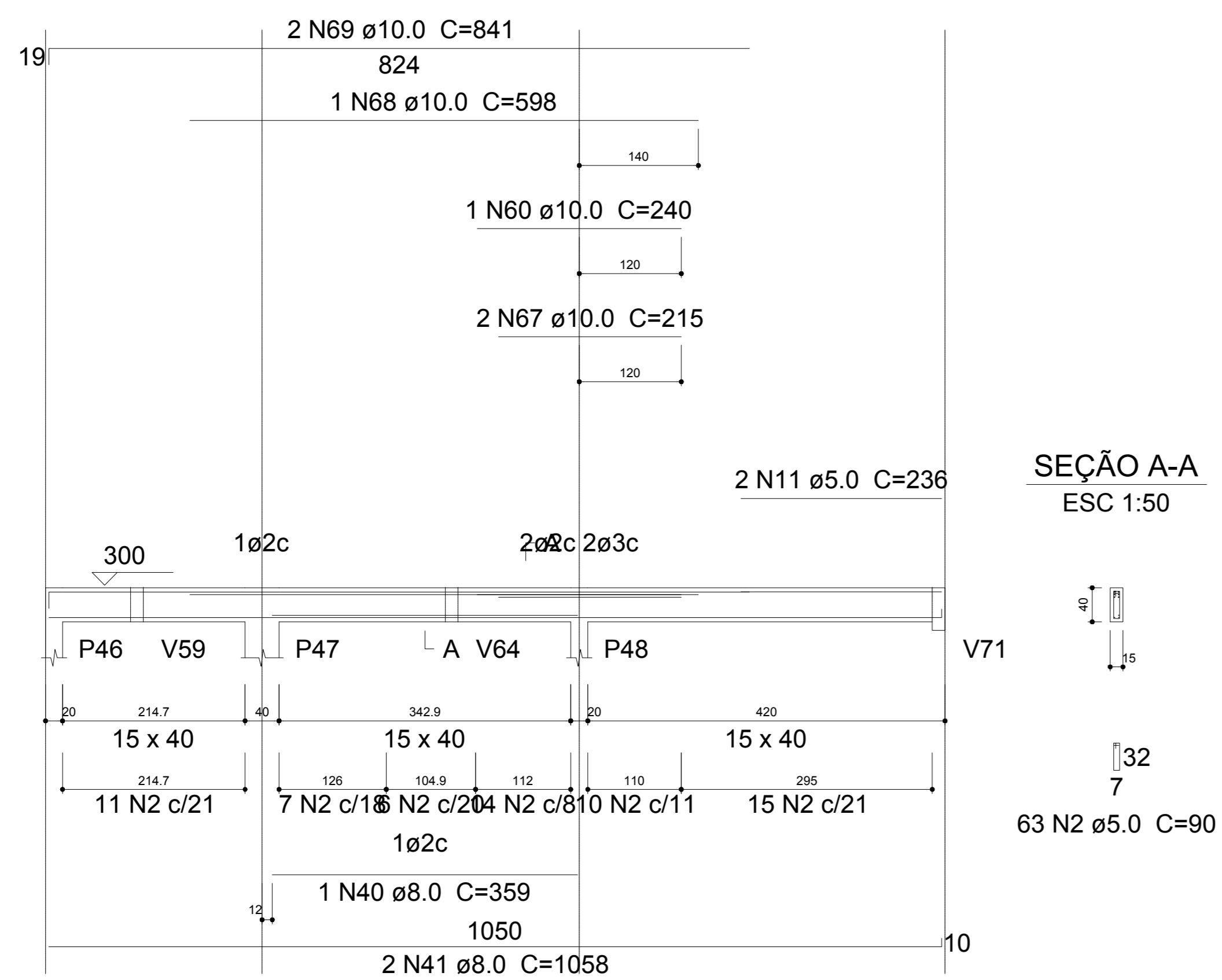
V27
ESC 1:50



SEÇÃO A-A
ESC 1:50

10 N9 ø5.0 C=110

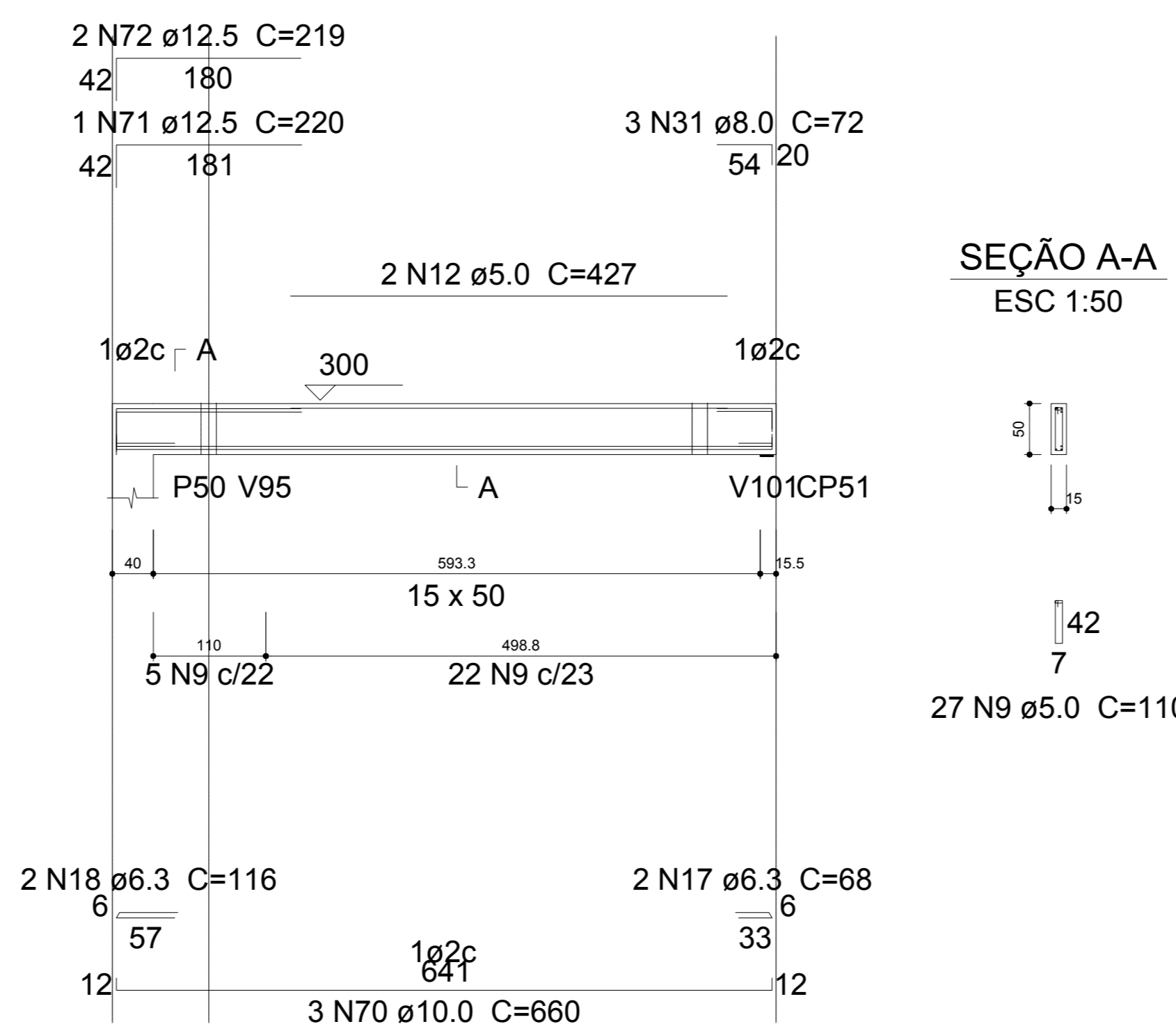
V23
ESC 1:50



SEÇÃO A-A
ESC 1:50

63 N2 ø5.0 C=90

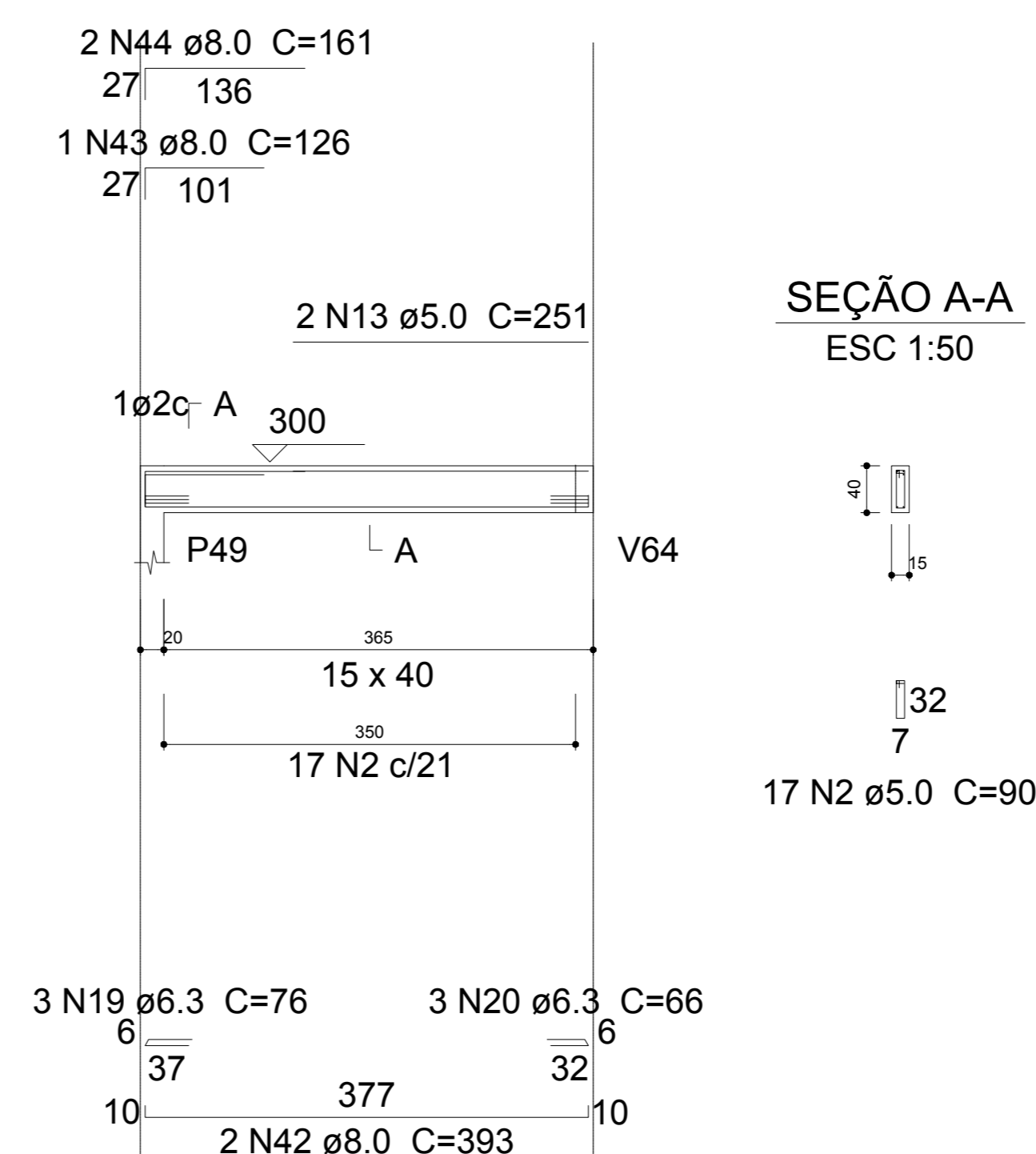
V24
ESC 1:50



SEÇÃO A-A
ESC 1:50

27 N9 ø5.0 C=110

V25
ESC 1:50



SEÇÃO A-A
ESC 1:50

17 N2 ø5.0 C=90

20 VIGAS COBERTURA (Estrutura h=3,00m)
ESCALA: 1/50



Rua Primo Tacca, 350, Bairro Tacca - Janderês, SC
E-mail: engenharia@engeobra.com.br - Tel: (49) 9 9576-0226

OBRA: GINÁSIO SANTA TEREZINHA		
LOCAL: Rua Achilles Biassotto, s/n, Bairro Guarany - Xaxim - SC		
PROJETO: PROJETO ESTRUTURAL		
ESPECIFICAÇÕES: - Vigas cobertura	DATA: 07/2021	DESENHO: T.L
ÁREA: 3.544,73 m²	PRANCHA: 15 /27	
ESCALA: Indicada		
Projeto: SAMUEL SPESASSATO OUTEIRO Engº Civil - CREA SC 133319-7	Proprietário: PREFEITURA MUNICIPAL DE XAXIM CNPJ: 82.854.670/0001-30	