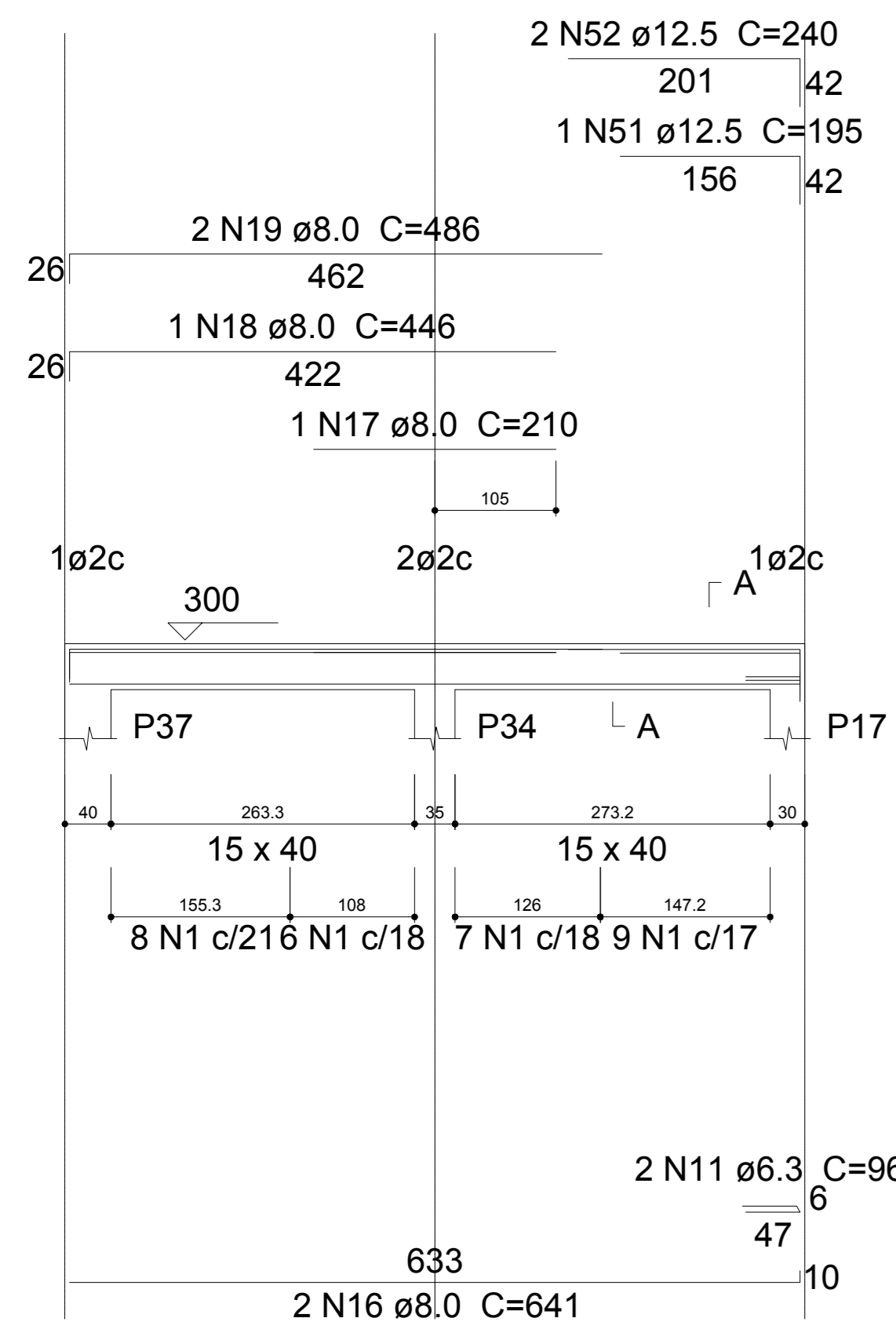
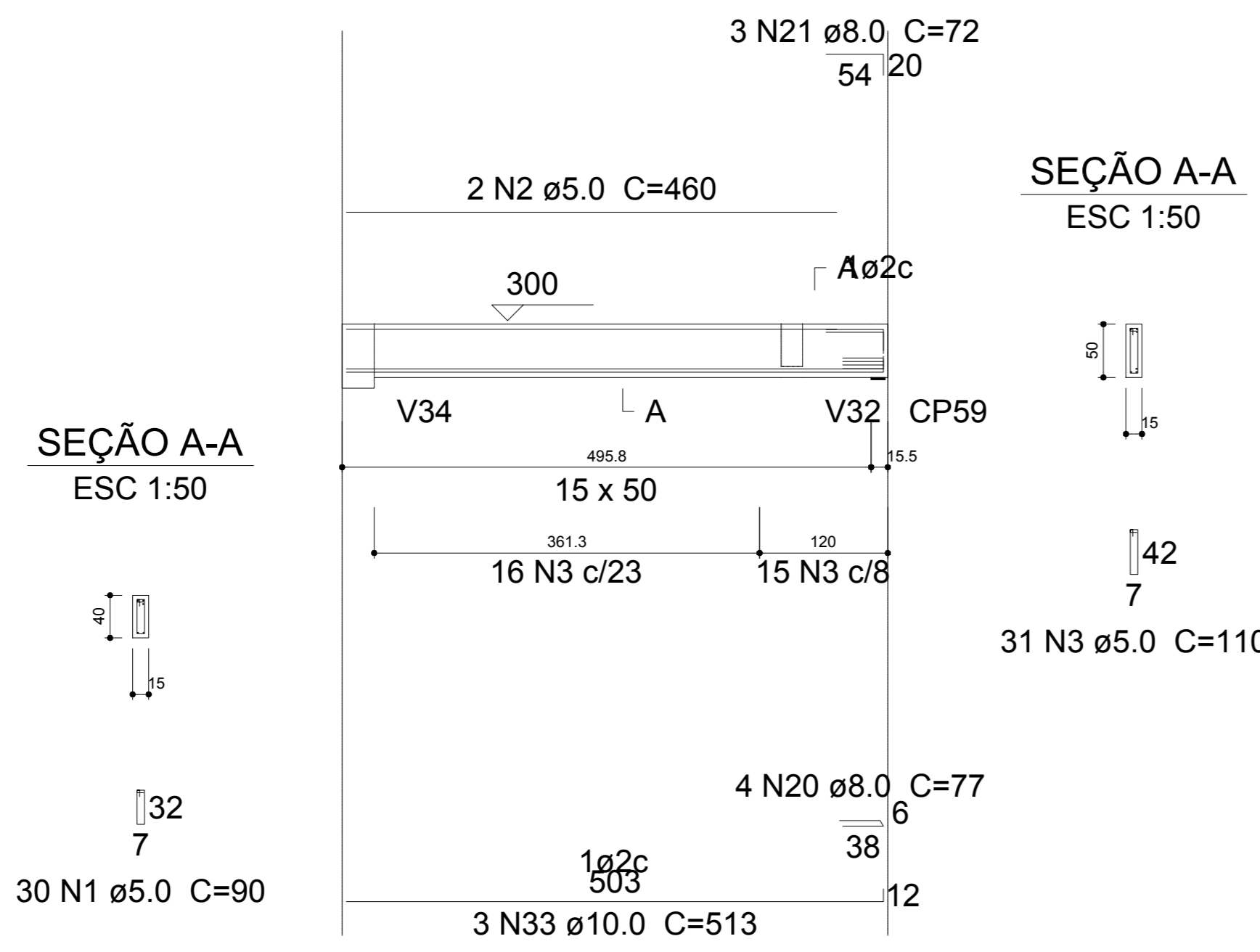


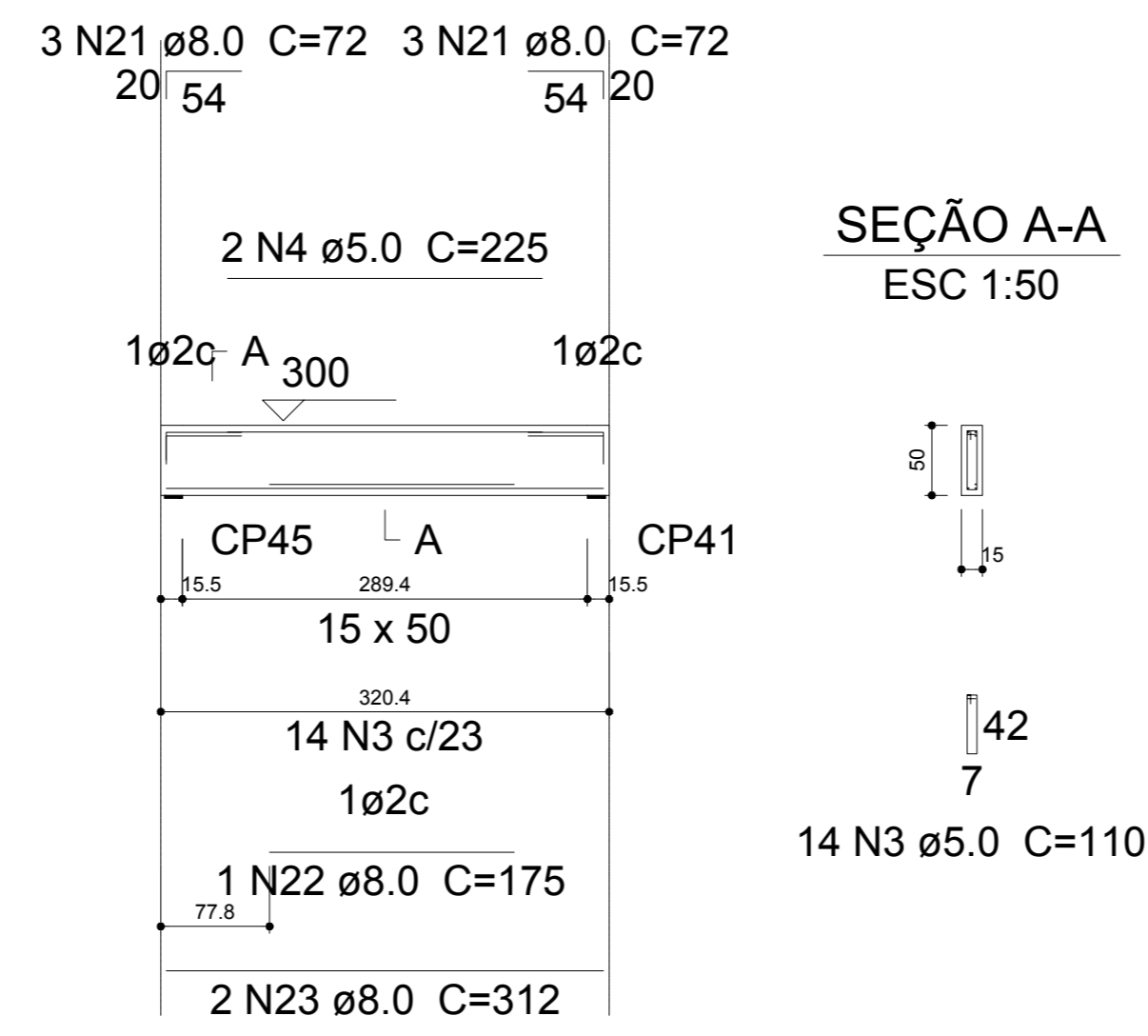
V68
ESC 1:50



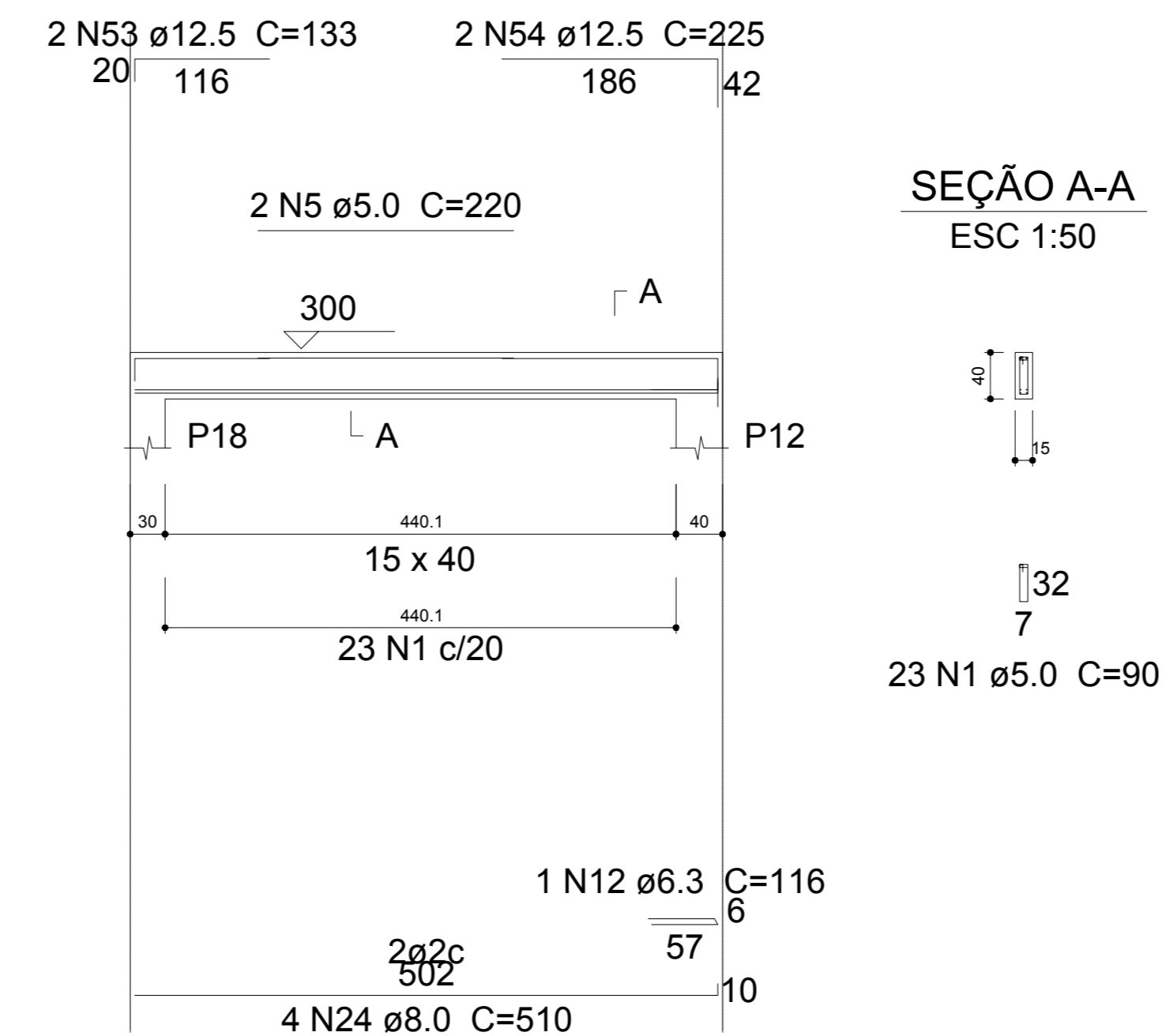
V69
ESC 1:50



V72
ESC 1:50



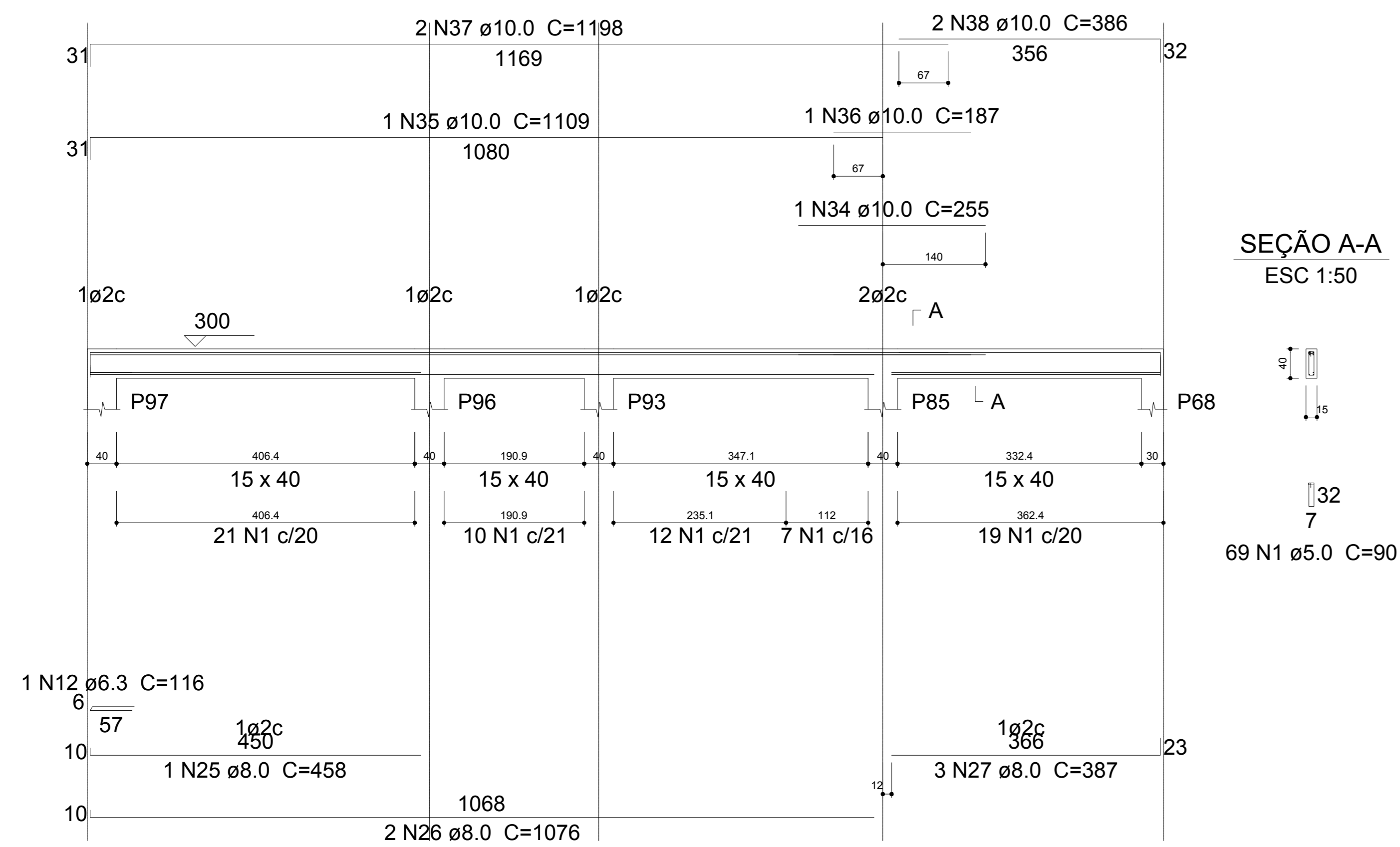
V74
ESC 1:50



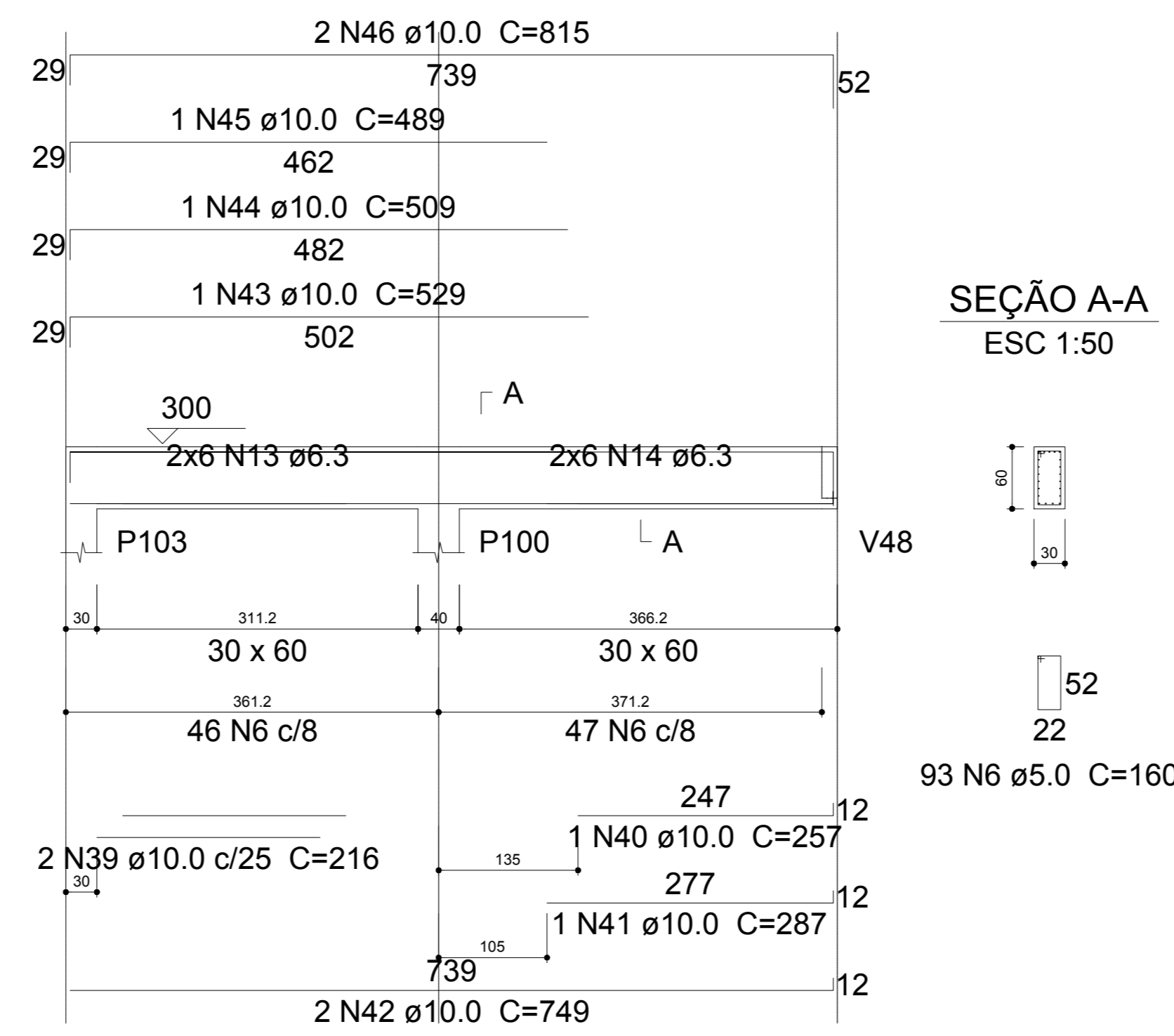
Relação do aço

ÇO	N	DIAM (mm)	QUANT (Barras)	UNIT (cm)	C.TOTAL (cm)
CA60	1	5.0	122	90	10980
	2	5.0	2	460	920
	3	5.0	103	110	11330
	4	5.0	2	225	450
	5	5.0	2	220	440
	6	5.0	93	160	14880
	7	5.0	2	326	652
	8	5.0	2	395	790
	9	5.0	29	120	3480
	10	5.0	2	407	814
CA50	11	6.3	2	96	192
	12	6.3	2	116	232
	13	6.3	12	CORR	4476
	14	6.3	12	CORR	4776
	15	6.3	5	68	340
	16	8.0	2	641	1282
	17	8.0	1	210	210
	18	8.0	1	446	446
	19	8.0	2	486	972
	20	8.0	4	77	308
	21	8.0	21	72	1512
	22	8.0	1	175	175
	23	8.0	2	312	624
	24	8.0	4	510	2040
	25	8.0	1	458	458
	26	8.0	2	1076	2152
	27	8.0	3	387	1161
	28	8.0	6	79	474
	29	8.0	3	142	426
	30	8.0	3	182	546
	31	8.0	3	502	1506
	32	8.0	3	212	636
	33	10.0	3	513	1539
	34	10.0	1	255	255
	35	10.0	1	1109	1109
	36	10.0	1	187	187
	37	10.0	2	1198	2396
	38	10.0	2	386	772
	39	10.0	2	216	432
	40	10.0	1	257	257
	41	10.0	1	287	287
	42	10.0	2	749	1498
	43	10.0	1	529	529
	44	10.0	1	509	509
	45	10.0	1	489	489
	46	10.0	2	815	1630
	47	10.0	2	424	848
	48	10.0	1	215	215
	49	10.0	3	493	1479
	50	10.0	2	255	510
	51	12.5	1	195	195
	52	12.5	2	240	480
	53	12.5	2	133	266
	54	12.5	2	225	450

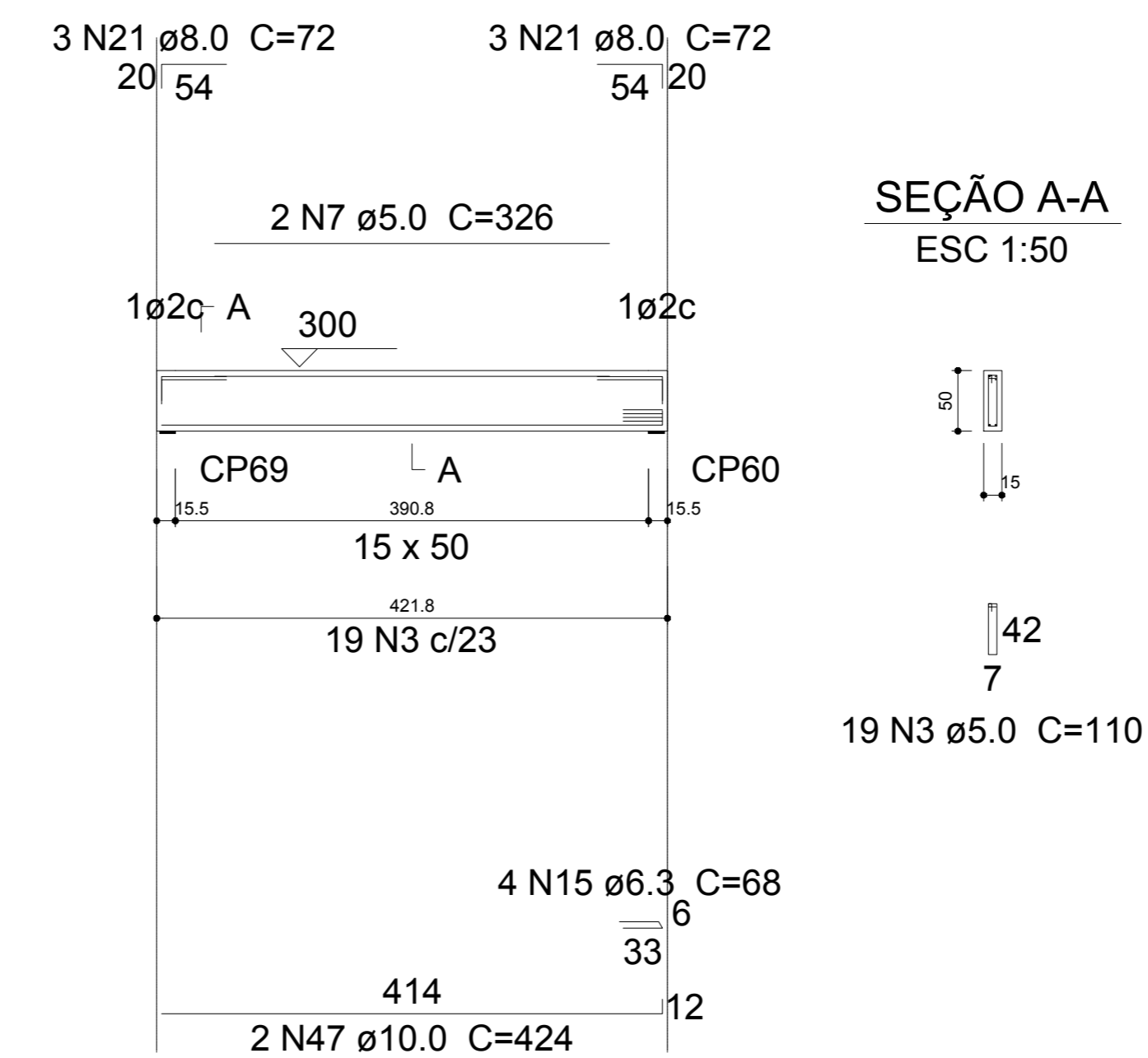
V73
ESC 1:50



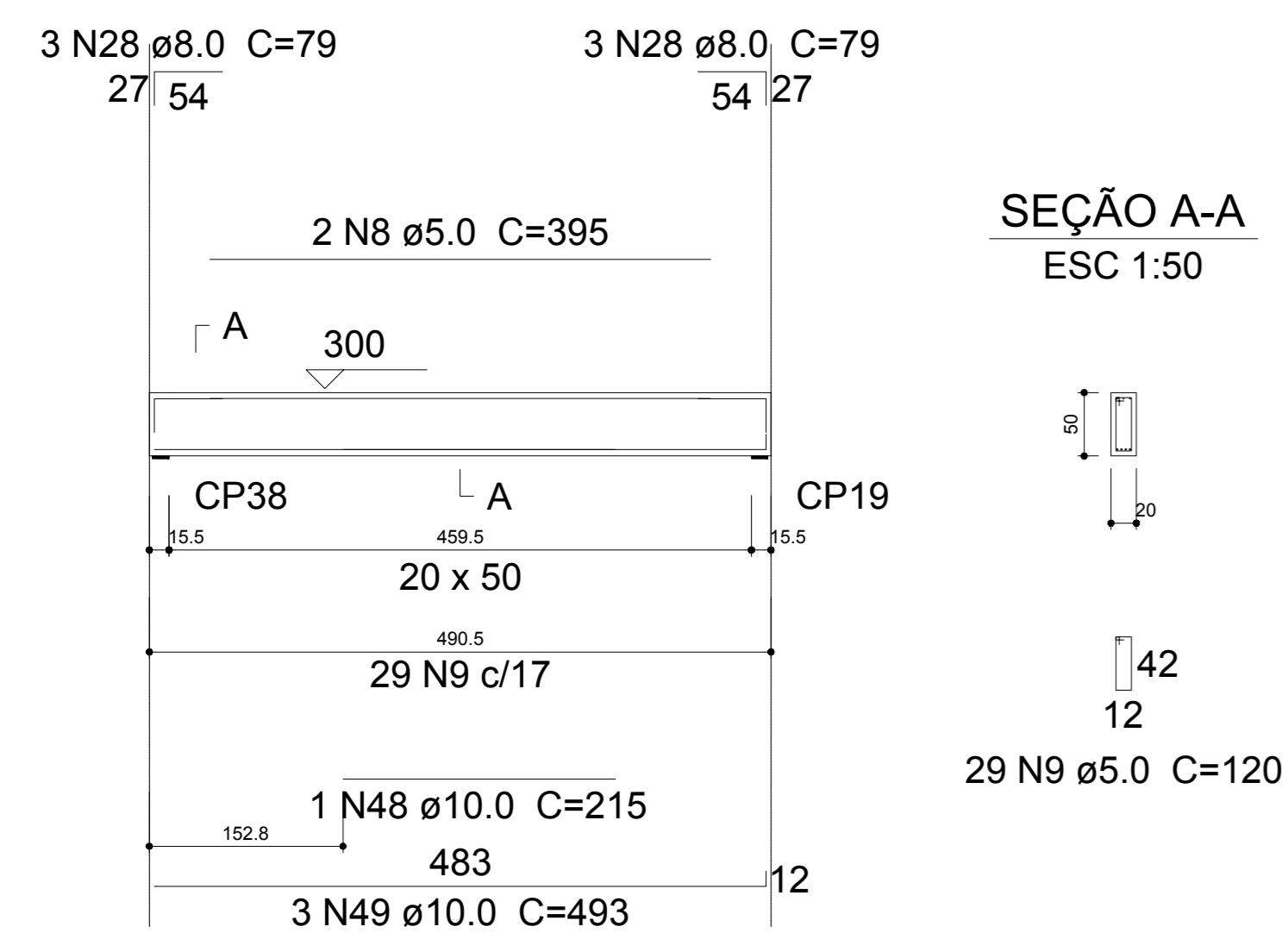
V75
ESC 1:50



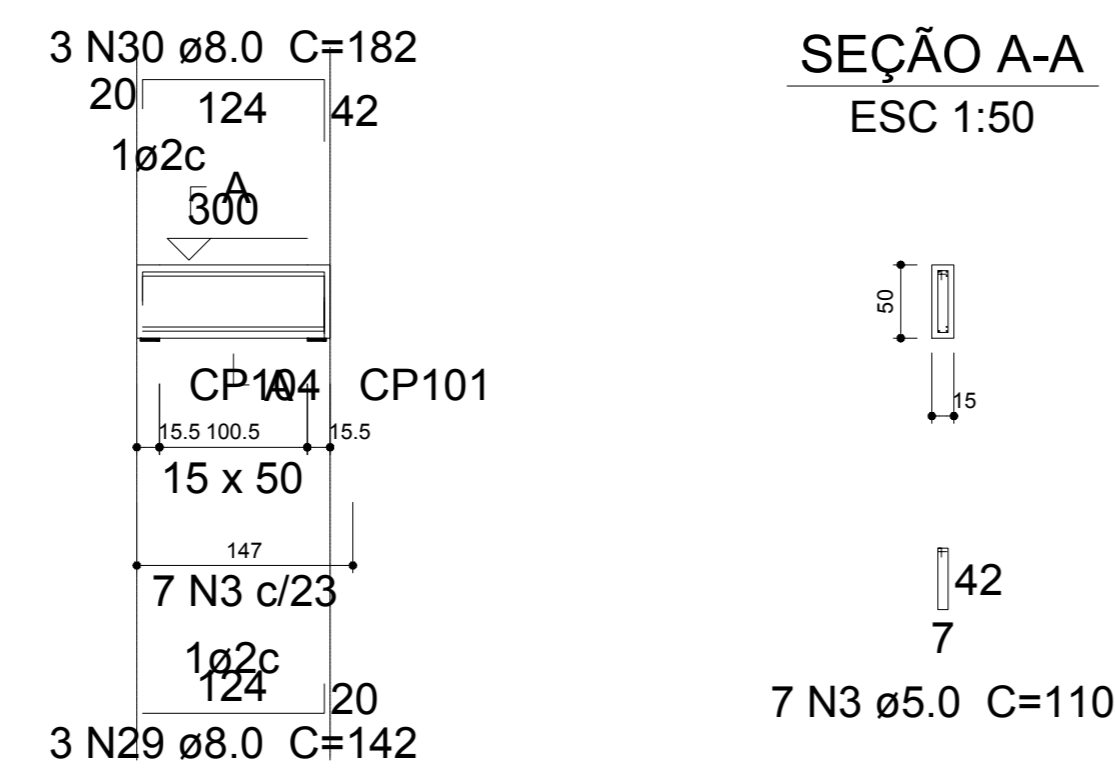
V76
ESC 1:50



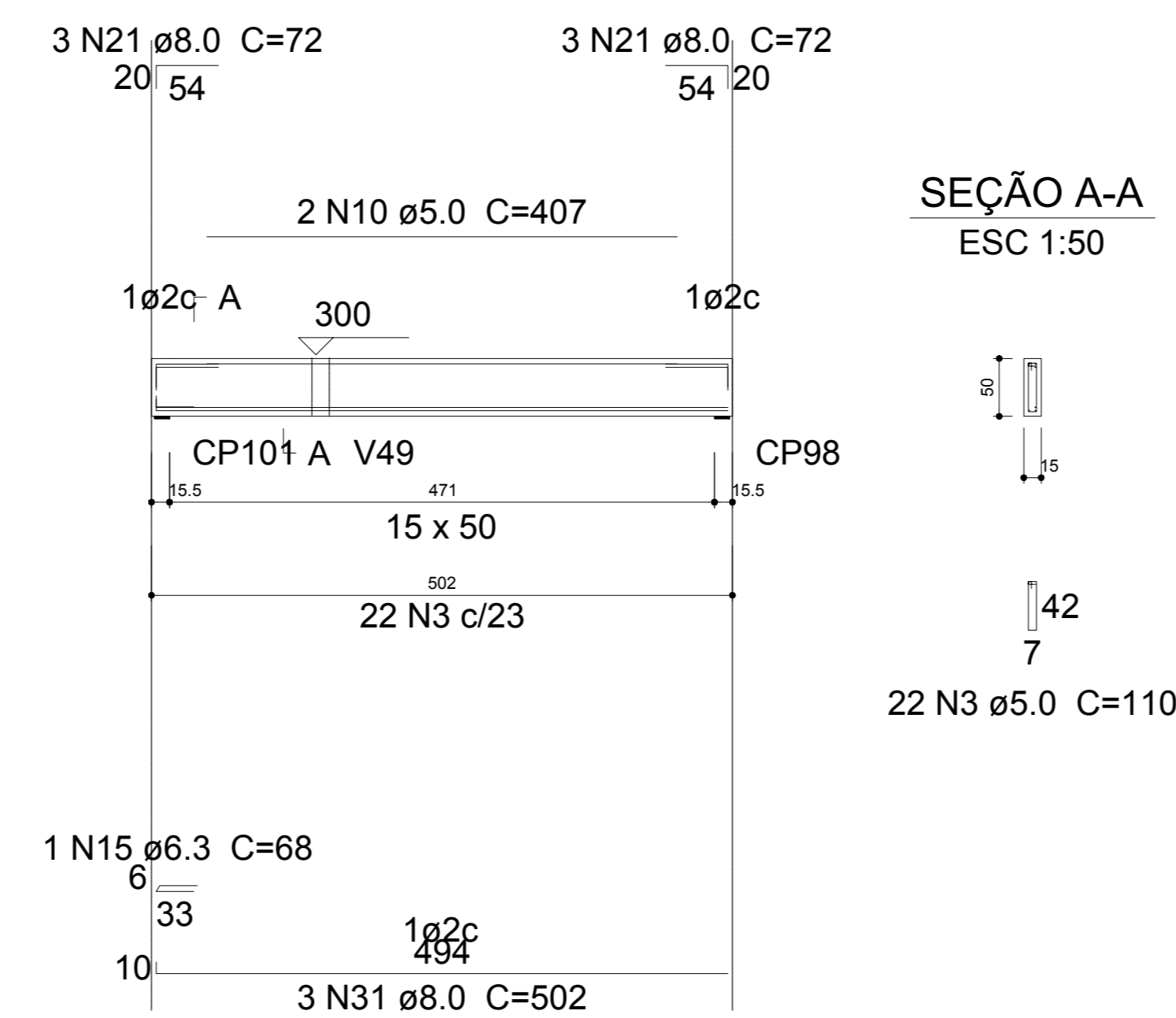
V77
ESC 1:50



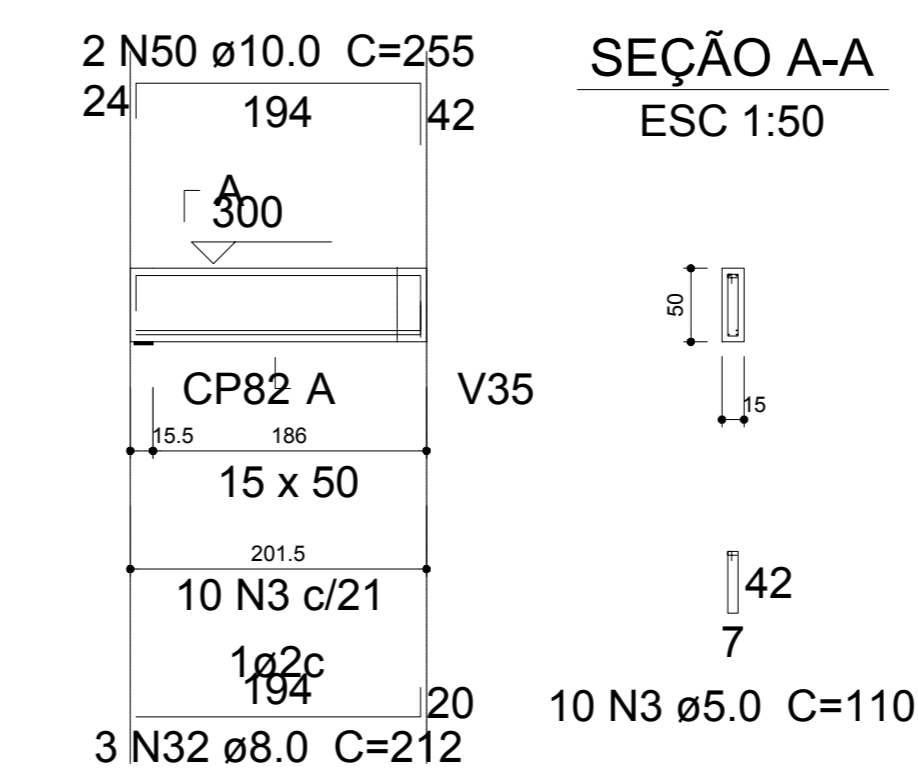
V79
ESC 1:50



V80
ESC 1:50



V83
ESC 1:50



Resumo do aço

ÇO	DIAM (mm)	C.TOTAL (m)	PESO + 10 % (kg)
CA50	6.3	100.2	27
	8.0	149.3	64.8
	10.0	149.5	101.3
	12.5	14	14.7
CA60	5.0	447.4	75.8
PESO TOTAL (kg)			
CA50		207.8	
CA60		75.8	

Volume de concreto (C-35) = 4.97 m³
Área de forma = 65.99 m²

Rua Primo Tacca, 300, Bairro Tacca - Jaraguá - SC
E-mail: engenharia@engeobra.com.br - Tel: (49) 9 9576-0226

OBRA: GINÁSIO SANTA TEREZINHA

LOCAL: Rua Achilles Biassotto, s/n, Bairro Guarany - Xaxim - SC

PROJETO: PROJETO ESTRUTURAL

ESPECIFICAÇÕES: - Vigas cobertura	DATA: 07/2021	DESENHO: T.L
	ÁREA: 3.544,73 m²	PRANCHA: 18 /27
	ESCALA: Indicada	

Projeto: SAMUEL SPESATTO OUTEIRO Engº Civil - CREA SC 133319-7

Proprietário: PREFEITURA MUNICIPAL DE XAXIM CNPJ: 82.854.670/0001-30