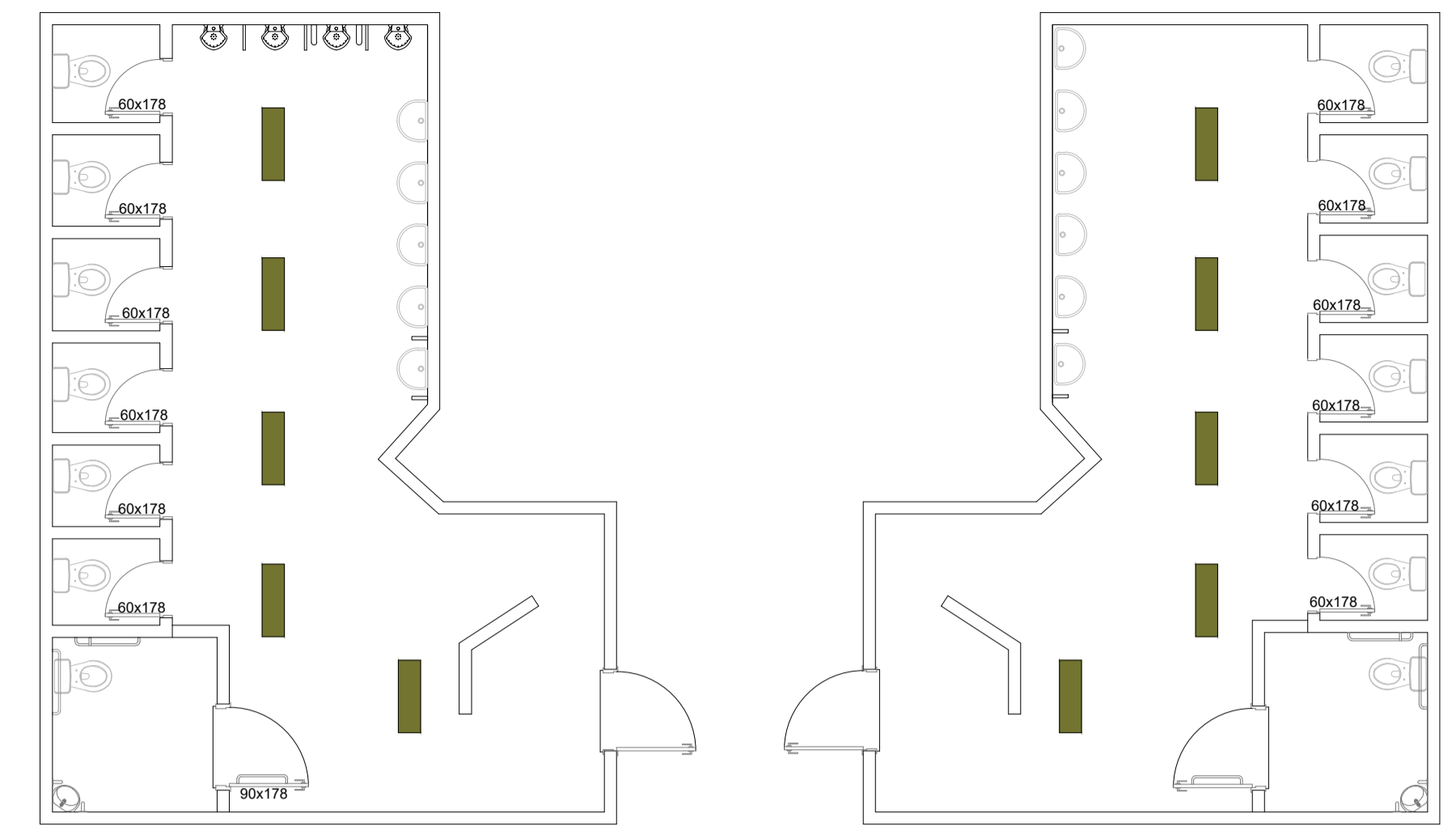
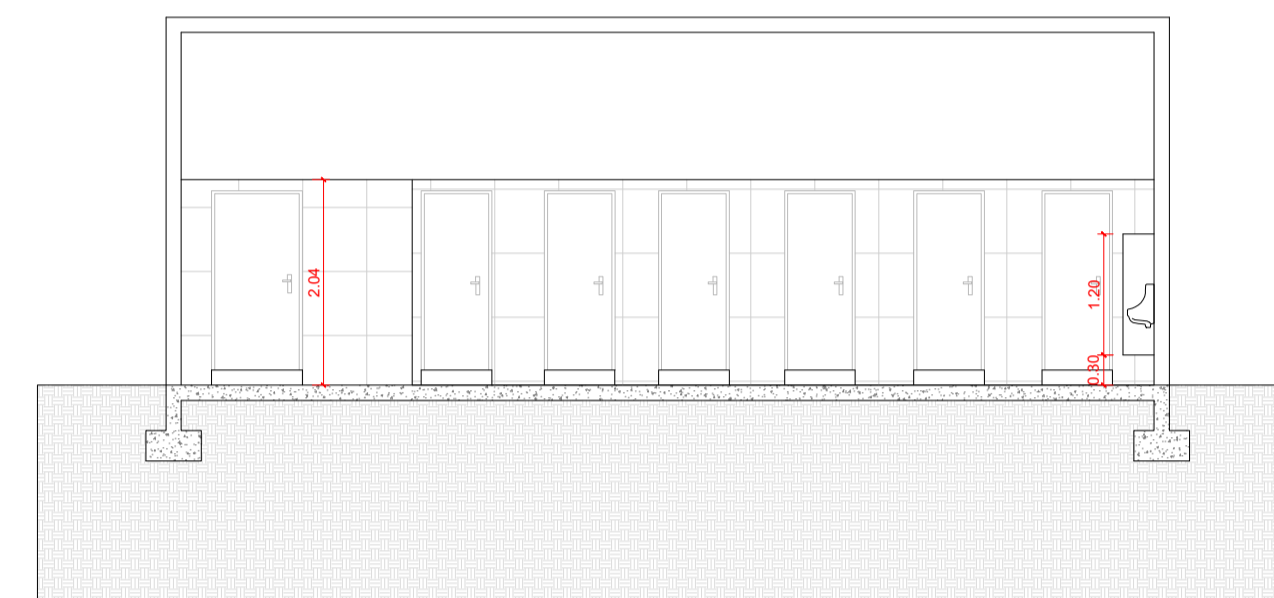
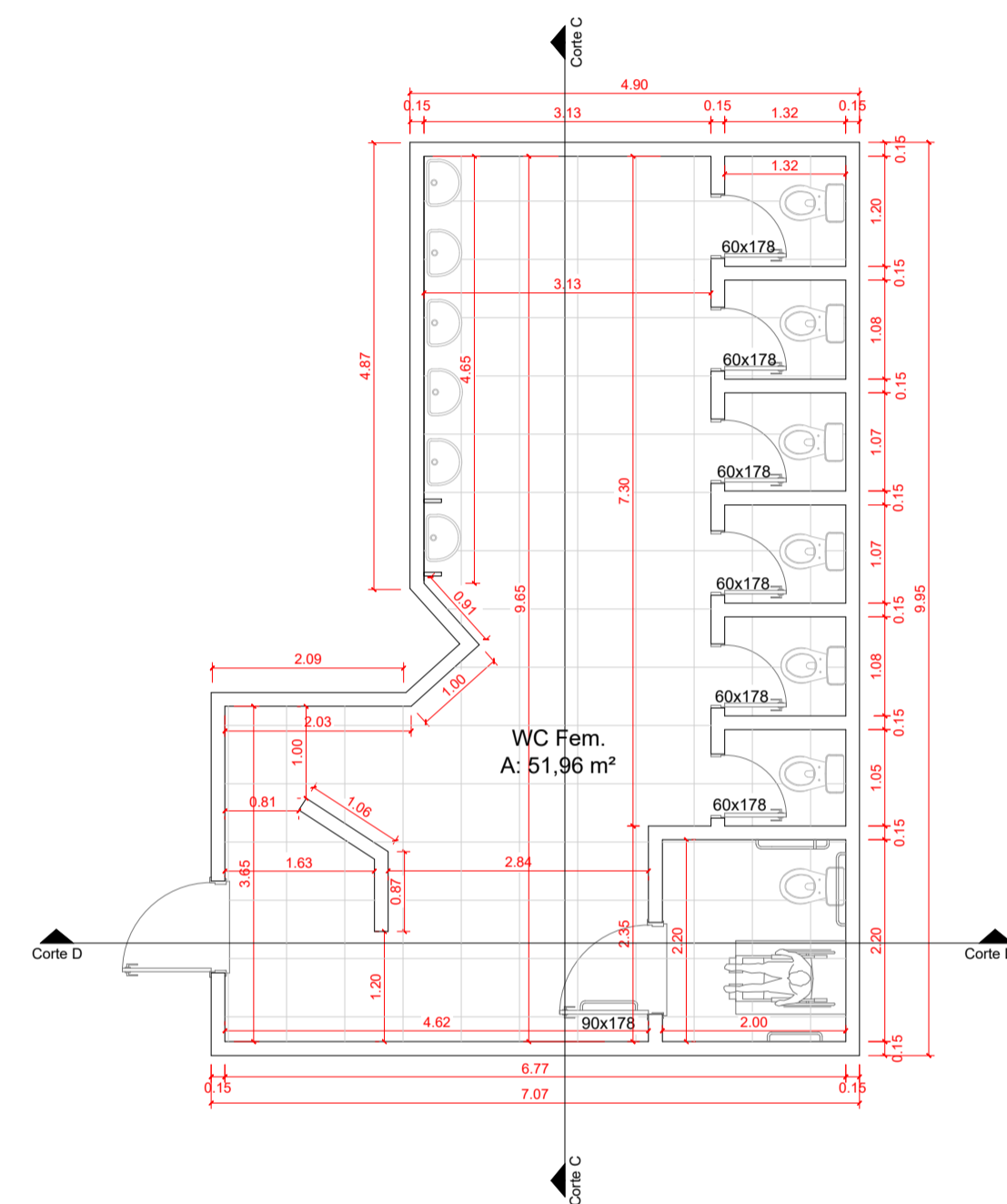
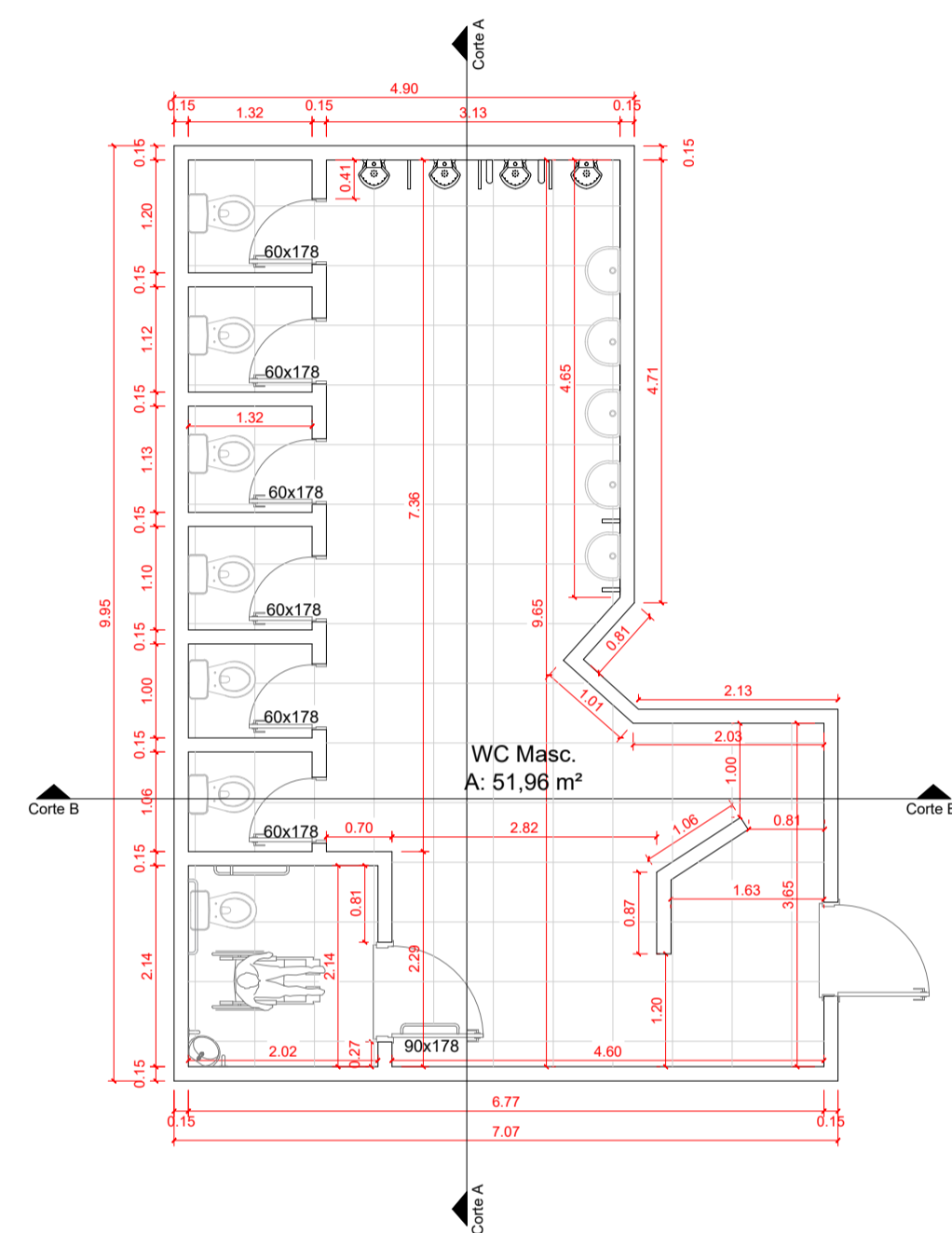


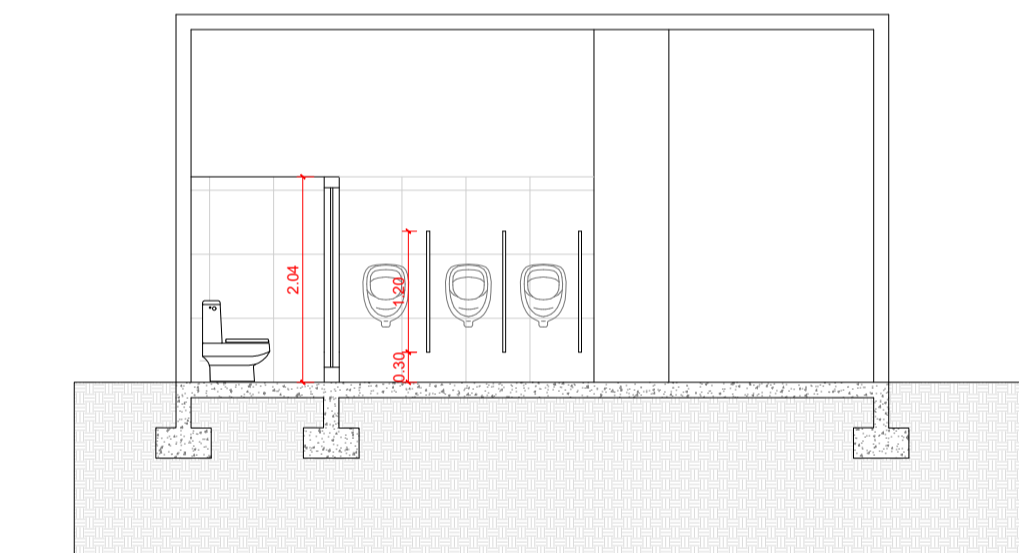
PLANTA BAIXA LOCAÇÃO - BANHEIROS
ESC: 1/75



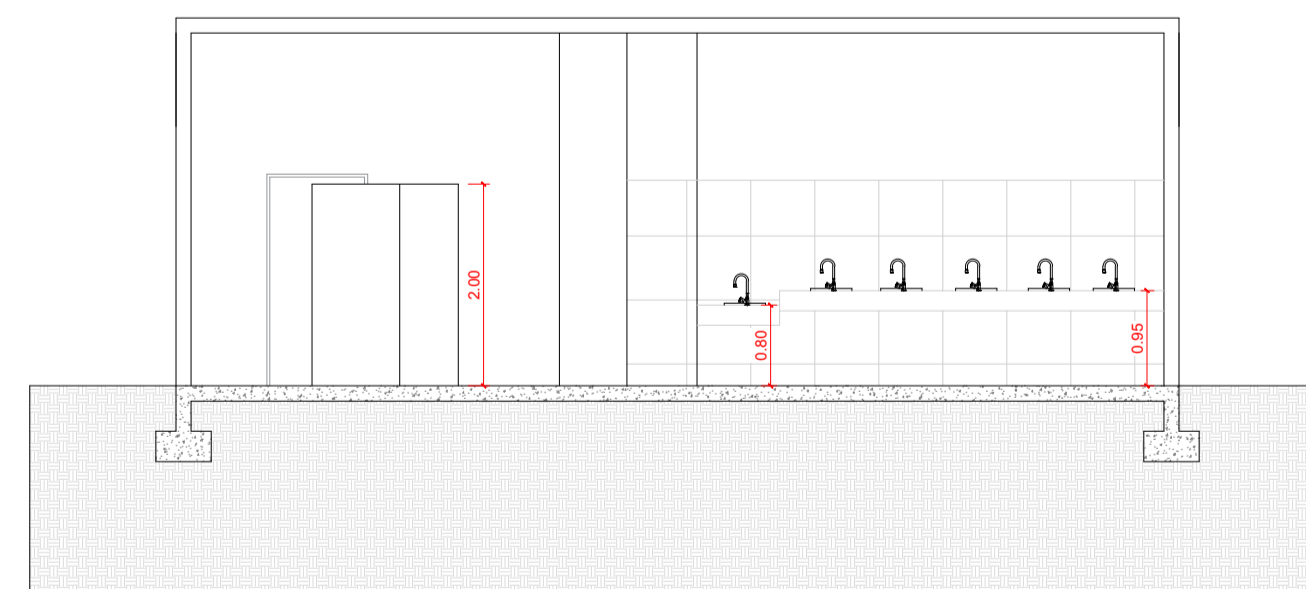
PLANTA BAIXA ILUMINAÇÃO - BANHEIROS MASCULINO E FEMININO
ESC: 1/75



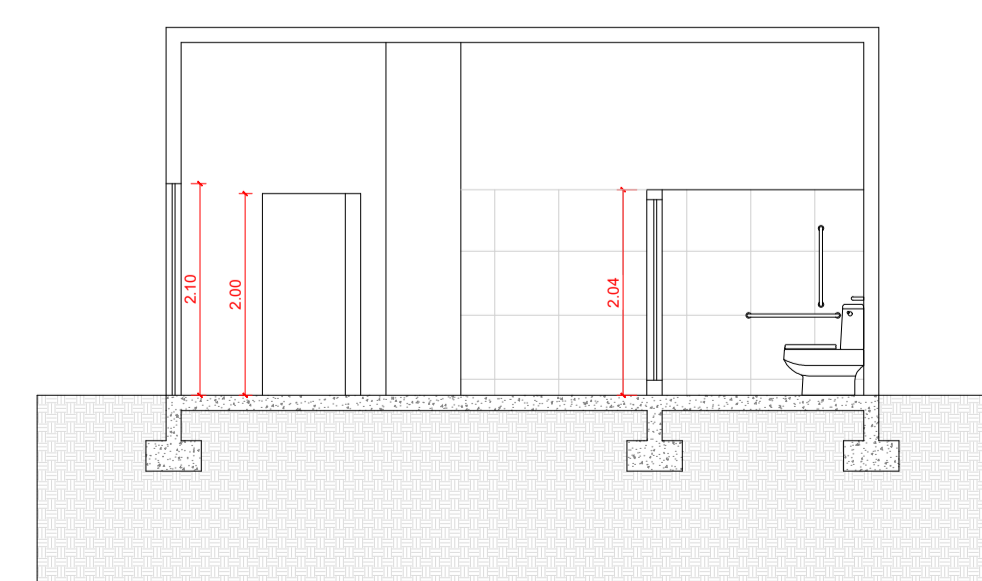
Corte AA' - WC Masc.
Esc: 1/75



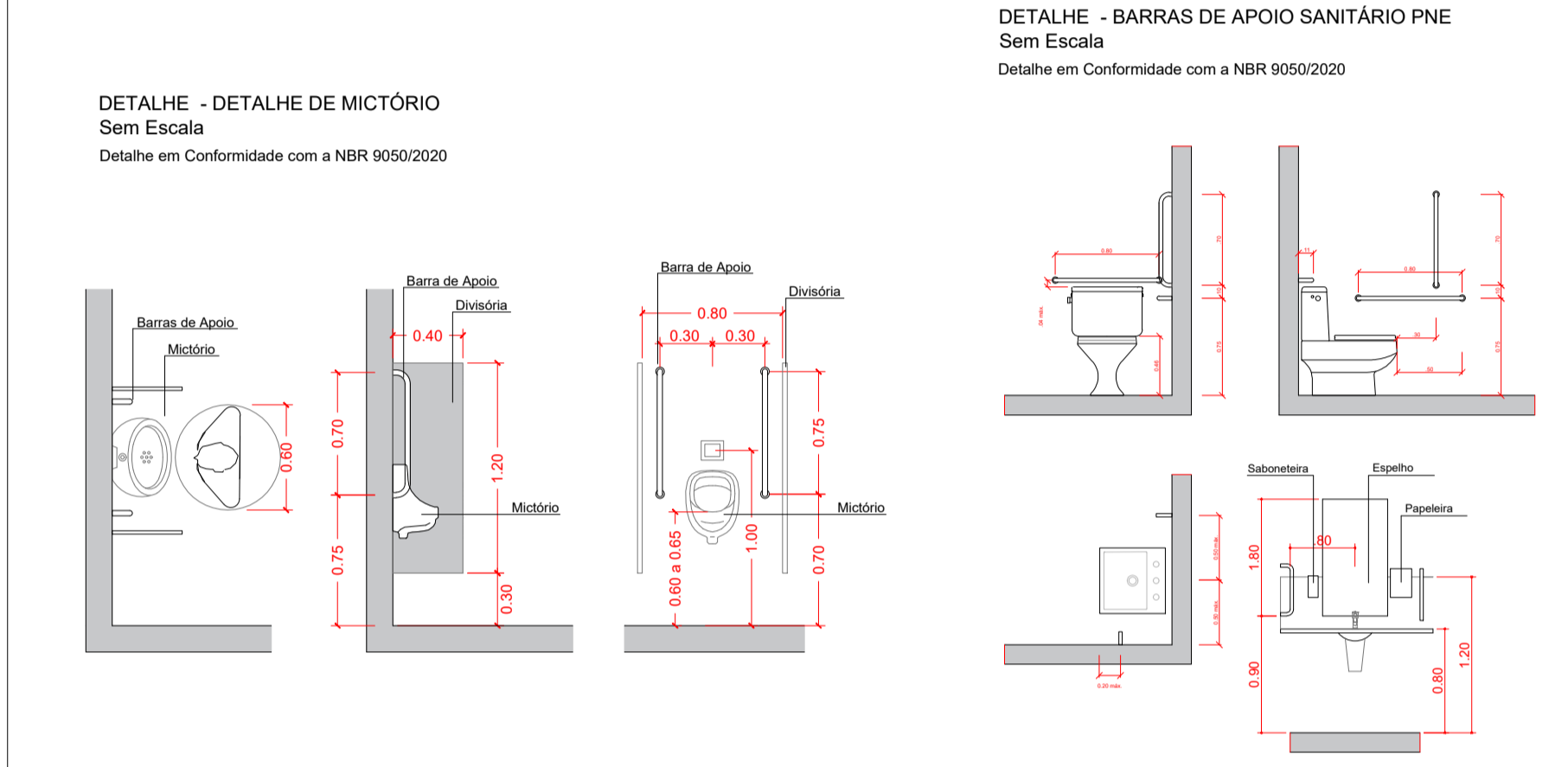
Corte BB' - WC Masc.
Esc: 1/75



Corte CC' - WC Fem.
Esc: 1/75

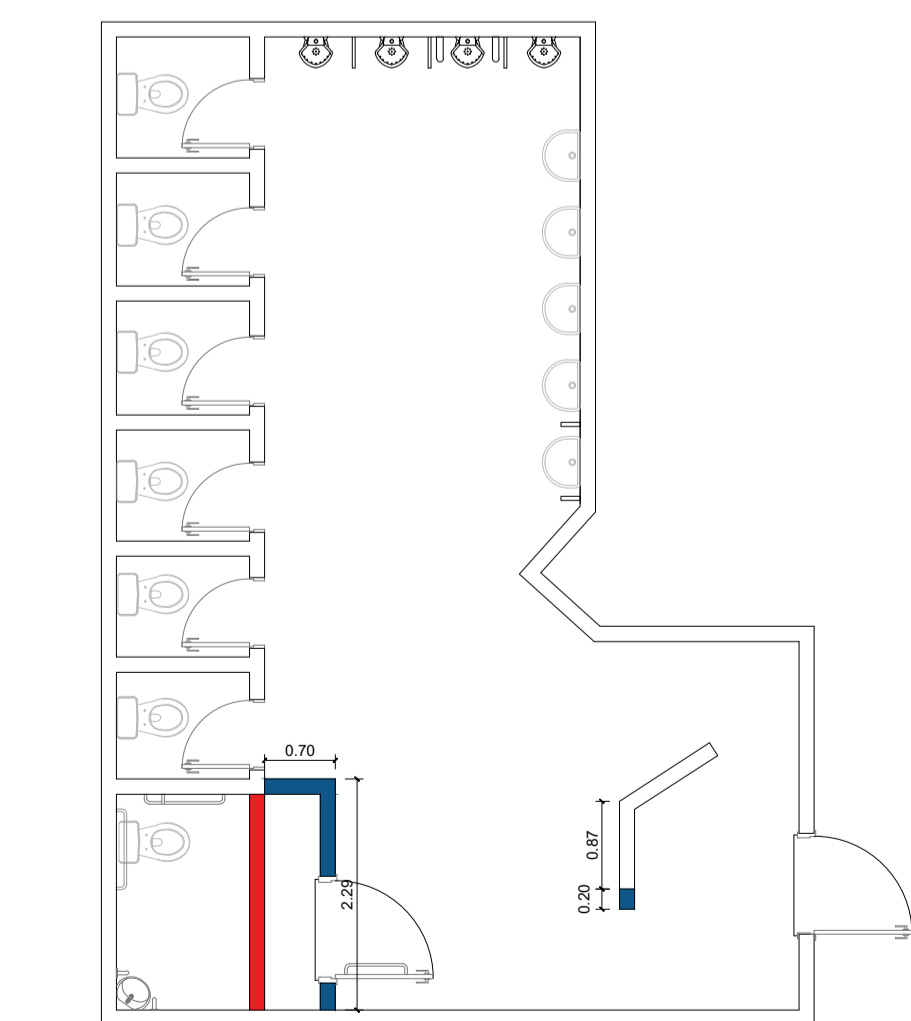


Corte DD' - WC Fem.
Esc: 1/75



PLANTA BAIXA - BANHEIROS MASCULINO E FEMININO
ESC: 1/75

PROJETO ARQUITETÔNICO



PLANTA BAIXA - BANHEIROS MASCULINO E FEMININO
ESC: 1/75



PREFEITURA MUNICIPAL DE XAXIM

| | | | |
|----------------------|---|----------|----------|
| Projeto: | Ginásio de Esportes Alberto Ângelo Sordi Rua Farrapos, 1834 - Bairro Ari Lunardi - Xaxim, SC | Data: | 11/2021 |
| Responsável Técnico: | Thaynara Lais Verginassi - CREA 135239-5 | Escala: | Indicada |
| Prefeito Municipal: | Xaxim - SC | Área: | Indicada |
| Especificações: | Planta baixa - banheiros - cortes - detalhes | Desenho: | - |
| | | Prancha: | ARQ-03 |